



DATE: June 27, 2019

FROM: Wight & Company
2500 N. Frontage Road
Darien, IL 60561

SUBJECT: ADDENDUM #2 TO THE BIDDING DOCUMENTS FOR:
BID GROUP #7
MASTER FACILITY PLAN IMPLEMENTATION
COMMUNITY HIGH SCHOOL DISTRICT 99
1436 NORFOLK STREET
DOWNERS GROVE, IL 60516

Wight & Company

wightco.com

.....
2500 North Frontage Road

Darien, IL 60561

.....
P 630.969.7000

F 630.969.7979

This addendum forms a part of the Bidding Contract Documents, dated May 10, 2019. Bidders must acknowledge receipt of this Addendum in the space provided on the Bid Form. Drawing revisions clouded and tagged with delta 24.

SOUTH

Questions & Answer Log

I. Clarifications

II. Specifications

1. REPLACE attached specification 075323 – ETHYLENE-PROPYLENE-DIENE-MONOMER (EPDM) ROOFING
 - a. Substrate board and vapor retarder/temporary roof added.
 - b. Roofing insulation revised to adhered.

III. Modified Drawings

ARCHITECTURAL

1. Sheet A2.04 OVERALL ROOF PLAN (**Full size sheet reissued**):
 - a. Keynote 36 clarifying expansion joint locations added.
 - b. RF-01 revised to RF-02. Description of RF-02 added.
 - c. Detail callout 9/A5.10 added.

- d. Keynote 37 regarding aluminum roof access ladder added.
 - e. Extents of walkway pads revised to include area around mechanical units.
2. Sheet A5.00 EXTERIOR WALL SECTIONS & DETAILS - PHASE B (**Full size sheet reissued**)
- a. Expansion joint details revised to include cant-mounted style with treated wood blocking.
 - b. Vapor retarder and substrate board added to all details.
3. Sheet A5.01 EXTERIOR WALL SECTIONS & DETAILS - PHASE B (**Full size sheet reissued**)
- a. Expansion joint details revised to include cant-mounted style with treated wood blocking.
 - b. Vapor retarder and substrate board added to all details.
4. Sheet A5.10 EXTERIOR WALL SECTIONS & DETAILS - PHASE B (**Full size sheet reissued**)
- a. Expansion joint details modified to cant-mounted style with treated wood blocking and to illustrate counterflashing set into reglet with sealant.
 - b. Vapor retarder and substrate board added to all details.

PLUMBING

5. Sheet P1.12C.b SANITARY & DRAINAGE FLOOR PLAN -LEVEL 2 AREA C (**Full size sheet reissued**):
- a. Additional roof drain and overflow added near column line 99.BE. Piping extended back to column line 99.BB.
6. Sheet P1.13C.b SANITARY & DRAINAGE FLOOR PLAN -ROOF LEVEL AREA C (**Full size sheet reissued**):
- a. Roof drain and overflow added near column line 99.BE.

This addendum consists of: (2) Text Pages (1) Specification Sections and (6) Modified Drawing Sheets.

END OF ADDENDUM



2500 North Frontage Road
Darien, IL 60561
630.969.7000
Fax 630.737.0518
www.wightco.com

Project Name: *District 99 MFP Implementation South*

Project Number: 180030

Date: June 28, 2019

Bid Question/Answer Log No. 1

The following clarification information is provided in response to questions received in accordance with the bid documents for the following Bid Packages:

Bid Group: 7 Part A
Bid Packages: 51-54

#	Questions	Date	Answers	Date/By
1.	Is there a schedule on this project? When are you needing steel to start erect?	06/19/19	The schedule is included in the bid documents.	06/19/19 JT
2.	Are there LD's for this project? What is warranty requirement?	06/19/19	No LDs for this project. Standard warranty required is a 1-year labor and material warranty plus any special warranties listed out in the specifications if applicable.	06/19/19 IE
3.	On sheet S0.1B upper right corner there are references to tonnage allowances. The scope calls for a \$30K allowance for the steel. Is the \$30K to cover the tonnage or is it a different one?	6/26/19	Yes the 30K allowance will cover the tonnage allowance.	6/28/19 AP
4.	Steel scope item #4 mentions 'indicating embed design'. Can you clarify further what is meant by embed design? Does that just mean we have to show length of embedment of erection plans?	6/26/19	Provide the embed size, length, spacing, and proposed chemical anchor product.	6/28/19 AP
5.	Scope calls for shop drawings & calcs to be provided within 4 weeks. Anchor bolts can typically be provided in one week or 2 at most. Currently Joists & deck are running 6 – 7 weeks for shop drawings. Steel could probably be drawn in 4 weeks but it typically taken another week for calcs. Just wanting to know if there is leeway in submittal time?	6/26/19	Yes. Please issue shop drawings as they become available.	6/28/19 AP

SECTION 075323 - ETHYLENE-PROPYLENE-DIENE-MONOMER (EPDM) ROOFING

PART 1 - GENERAL

1.1 RELATED DOCUMENTS

- A. Drawings and general provisions of the Contract, including General and Supplementary Conditions and Division 01 Specification Sections, apply to this Section.

1.2 SUMMARY

- A. Section Includes:

1. Adhered EPDM membrane roofing system.
2. Substrate board.
3. Vapor retarder/temporary roof.
4. Roof insulation.

- B. Related Requirements:

1. Division 06 Section "Rough Carpentry" for wood nailers, curbs, and blocking.
2. Division 07 Section "Manufactured Roof Expansion Joints" for proprietary manufactured roof expansion-joint assemblies.
3. Division 07 Section "Sheet Metal Flashing and Trim" for metal roof penetration flashings, flashings, and counterflashings.
4. Division 07 Section "Joint Sealants" for joint sealants, joint fillers, and joint preparation.
5. Division 22 Section "Storm Drainage Piping Specialties" for roof drains.

1.3 DEFINITIONS

- A. Roofing Terminology: Refer to ASTM D 1079 and glossary of NRCA's "The NRCA Roofing and Waterproofing Manual" for definition of terms related to roofing work in this Section.

1.4 PREINSTALLATION MEETINGS

- A. Preinstallation Roofing Conference: Conduct conference at Project site.

1. Meet with Owner, Architect, Owner's insurer if applicable, testing and inspecting agency representative, roofing Installer, roofing system manufacturer's representative, deck Installer, and installers whose work interfaces with or affects roofing, including installers of roof accessories and roof-mounted equipment.
2. Review methods and procedures related to roofing installation, including manufacturer's written instructions.

3. Review and finalize construction schedule and verify availability of materials, Installer's personnel, equipment, and facilities needed to make progress and avoid delays.
4. Examine deck substrate conditions and finishes for compliance with requirements, including flatness and fastening.
5. Review structural loading limitations of roof deck during and after roofing.
6. Review base flashings, special roofing details, roof drainage, roof penetrations, equipment curbs, and condition of other construction that will affect roofing system.
7. Review governing regulations and requirements for insurance and certificates if applicable.
8. Review temporary protection requirements for roofing system during and after installation.
9. Review roof observation and repair procedures after roofing installation.

1.5 ACTION SUBMITTALS

- A. Product Data: For each type of product indicated.
 1. Product Data: For roof materials, indicating that roof materials comply with Solar Reflectance Index requirement.
 2. Laboratory Test Reports: For adhesives and sealants used inside the weatherproofing system, indicating compliance with requirements for low-emitting materials.
- B. Shop Drawings: For roofing system. Include plans, elevations, sections, details, and attachments to other Work.
 1. Base flashings and membrane terminations.
 2. Tapered insulation, including slopes.
 3. Insulation fastening patterns for corner, perimeter, and field-of-roof locations.
- C. Samples for Verification: For the following products, in manufacturer's standard sizes:
 1. Sheet roofing, of color specified, including T-shaped side and end lap seam.
 2. Roof insulation, including tapered insulation and slopes.
 3. Walkway pads.
 4. Termination bars.
 5. Six insulation fasteners of each type, length, and finish.

1.6 INFORMATIONAL SUBMITTALS

- A. Qualification Data: For qualified Installer and manufacturer.
- B. Installer Certificates: Signed by roofing system manufacturer certifying that Installer is approved, authorized, or licensed by manufacturer to install roofing system.

- C. Manufacturer Certificates: Signed by roofing manufacturer certifying that roofing system complies with requirements specified in "Performance Requirements" Article.
 - 1. Upon request submit evidence of meeting performance requirements.
 - D. Product Test Reports: Based on evaluation of comprehensive tests performed by manufacturer and witnessed by a qualified testing agency, for components of membrane roofing system.
 - E. Research/Evaluation Reports: For components of membrane roofing system, from the ICC-ES.
 - F. Field quality-control reports.
 - 1. Inspection Reports: Daily reports of roofing inspector, including weather conditions, description of work performed, tests performed, defective work observed, and corrective actions taken to correct defective work.
 - G. Sample Warranties: For manufacturer's special warranties.
- 1.7 CLOSEOUT SUBMITTALS
- A. Maintenance Data: For membrane roofing system to include in maintenance manuals.
- 1.8 QUALITY ASSURANCE
- A. Manufacturer Qualifications: A qualified manufacturer that is UL listed for membrane roofing system identical to that used for this Project.
 - B. Installer Qualifications: A qualified firm that is approved, authorized, or licensed by membrane roofing system manufacturer to install manufacturer's product and that is eligible to receive manufacturer's special warranty.
 - C. Roofing Inspector Qualifications: An RCI Inc.-registered roofing observer (RRO) experienced with roofing-system indicated, or a technical representative of manufacturer not engaged in the sale of products and experienced in the installation and maintenance of the specified roofing system, qualified to perform roofing observation and inspection specified in Field Quality Control Article, to determine Installer's compliance with the requirements of this Project, and approved by the manufacturer to issue warranty certification.
 - 1. Manufacturer's technical representative shall be an authorized full-time technical employee of the manufacturer.
 - 2. Roofing inspector shall be on site for a minimum of 3 full-time days to perform roof tests and inspections and to prepare start up, interim, and final reports.

1.9 DELIVERY, STORAGE, AND HANDLING

- A. Deliver roofing materials to Project site in original containers with seals unbroken and labeled with manufacturer's name, product brand name and type, date of manufacture, and directions for storing and mixing with other components.
- B. Store liquid materials in their original undamaged containers in a clean, dry, protected location and within the temperature range required by roofing system manufacturer. Protect stored liquid material from direct sunlight.
 - 1. Discard and legally dispose of liquid material that cannot be applied within its stated shelf life.
- C. Protect roof insulation materials from physical damage and from deterioration by sunlight, moisture, soiling, and other sources. Store in a dry location. Comply with insulation manufacturer's written instructions for handling, storing, and protecting during installation.
- D. Handle and store roofing materials and place equipment in a manner to avoid permanent deflection of deck.

1.10 FIELD CONDITIONS

- A. Weather Limitations: Proceed with installation only when existing and forecasted weather conditions permit roofing system to be installed according to manufacturer's written instructions and warranty requirements.

1.11 WARRANTY

- A. Special Warranty: Manufacturer's standard form, without monetary limitation, in which manufacturer agrees to repair or replace components of membrane roofing system that fail in materials or workmanship within specified warranty period. Failure includes roof leaks.
 - 1. Special warranty includes membrane roofing, base flashings, roof insulation, fasteners, cover boards, substrate board, walkway products, and other components of membrane roofing system.
 - 2. Warranty wind speed coverage shall be peak gusts of 72 miles per hour, as measured at 10 meters above ground level.
 - 3. Warranty Period: 20 years from date of Substantial Completion.

PART 2 - PRODUCTS

2.1 MANUFACTURERS

- A. Manufacturers: Subject to compliance with requirements, provide products by one of the following:
1. Carlisle SynTec Incorporated.
 2. GenFlex Roofing Systems.
 3. Johns Manville.
 4. Mule-Hide Products Co., Inc.;
 5. Versico Roofing Systems.
- B. Source Limitations: Obtain components for roofing system from or approved by roofing system manufacturer.

2.2 PERFORMANCE REQUIREMENTS

- A. General Performance: Installed membrane roofing and base flashings shall withstand specified uplift pressures, thermally induced movement, and exposure to weather without failure due to defective manufacture, fabrication, installation, or other defects in construction. Membrane roofing and base flashings shall remain watertight.
1. Accelerated Weathering: Roofing system shall withstand 2000 hours of exposure when tested according to ASTM G 152, ASTM G 154, or ASTM G 155.
 2. Impact Resistance: Roofing system shall resist impact damage when tested according to ASTM D 3746 or ASTM D 4272.
- B. Material Compatibility: Provide roofing materials that are compatible with one another under conditions of service and application required, as demonstrated by membrane roofing manufacturer based on testing and field experience.
- C. Roofing System Design: Provide membrane roofing system that is identical to systems that have been successfully tested by a qualified testing and inspecting agency to resist uplift pressure calculated according to ASCE/SEI 7.
1. Corner Uplift Pressure: 87.9 lbf/sq. ft.
 2. Perimeter Uplift Pressure: 58.5 lbf/sq. ft.
 3. Field-of-Roof Uplift Pressure: 34.8 lbf/sq. ft.
 4. Depth of Perimeter and Corner Zones: 5.3 feet.
- D. Roof Edge Design: Comply with requirements of ANSI/SPRI ES-1.
- E. Solar Reflectance Index: Not less than 78 when calculated according to ASTM E 1980, based on testing identical products by a qualified testing agency.
- F. Energy Performance: Provide roofing system that is listed on the DOE's ENERGY STAR "Roof Products Qualified Product List" for low-slope roof products.

- G. Exterior Fire-Test Exposure: ASTM E 108, Class A or Class B; for application and roof slopes indicated, as determined by testing identical membrane roofing materials by a qualified testing agency. Materials shall be identified with appropriate markings of applicable testing agency.

2.3 EPDM MEMBRANE ROOFING

- A. EPDM: ASTM D 4637, Type I, nonreinforced uniform, flexible sheet.
 - 1. Thickness: 60 mils, nominal.
 - 2. Exposed Face Color: Black.

2.4 AUXILIARY MEMBRANE ROOFING MATERIALS

- A. General: Auxiliary membrane roofing materials recommended by roofing system manufacturer for intended use and compatible with membrane roofing.
 - 1. Liquid-type auxiliary materials shall comply with VOC limits of authorities having jurisdiction.
 - 2. Adhesives and sealants that are not on the exterior side of weather barrier shall comply with the testing and product requirements of the California Department of Health Services' "Standard Practice for the Testing of Volatile Organic Emissions from Various Sources Using Small-Scale Environmental Chambers."
- B. Sheet Flashing: 60-mil- thick EPDM, partially cured or cured, according to application.
- C. Prefabricated Pipe Flashings: As recommended by roof membrane manufacturer.
- D. Bonding Adhesive: Manufacturer's standard.
- E. Seaming Material: Manufacturer's standard synthetic-rubber polymer primer and 3-inch-wide minimum, butyl splice tape with release film.
- F. Lap Sealant: Manufacturer's standard single-component sealant, color to match roofing membrane.
- G. Water Cutoff Mastic: Manufacturer's standard butyl mastic sealant.
- H. Metal Termination Bars: Manufacturer's standard predrilled stainless-steel or aluminum bars, approximately 1 by 1/8 inch thick; with anchors.
- I. Miscellaneous Accessories: Provide pourable sealers, preformed cone and vent sheet flashings, preformed inside and outside corner sheet flashings, reinforced EPDM securement strips, T-joint covers, in-seam sealants, termination reglets, cover strips, and other accessories.
 - 1. Provide white flashing accessories for white EPDM membrane roofing.

2.5 SUBSTRATE BOARD

- A. Substrate Board: ASTM C 1177, glass-mat, water-resistant gypsum board.
 - 1. Basis-of-Design Product: Subject to compliance with requirements, provide Georgia-Pacific Gypsum LLC;; Dens Deck Prime, or equal.
 - 2. Thickness: 1/2 inch.
 - 3. Surface Finish: Factory primed.
- B. Fasteners: Factory-coated steel fasteners and metal or plastic plates complying with corrosion-resistance provisions in FM Approvals 4470, designed for fastening substrate panel to roof deck.

2.6 VAPOR RETARDER/TEMPORARY ROOF

- A. Self-Adhering-Sheet Vapor Retarder: ASTM D1970/D1970M, polyethylene film laminated to layer of rubberized asphalt adhesive, minimum 40-mil- total thickness; maximum permeance rating of 0.1 perm; cold applied, with slip-resisting surface and release paper backing. Provide primer when recommended by vapor retarder manufacturer.

2.7 ROOF INSULATION

- A. General: Preformed roof insulation boards manufactured or approved by EPDM membrane roofing manufacturer, selected from manufacturer's standard sizes suitable for application, of thicknesses indicated.
- B. Polyisocyanurate Board Insulation: ASTM C 1289, Type II, Class 1, glass-fiber mat facer on both major surfaces.
 - 1. Compressive Strength:
 - a. Roof Insulation Below Cover Board: 20 psi
 - b. Roof Insulation with No Cover Board: Provide Grade 3 insulation, 25 psi.
- C. Tapered Insulation: Provide factory-tapered insulation boards.
 - 1. Material: Match roof insulation.
 - 2. Minimum Thickness: 1/4 inch.
 - 3. Slope:
 - a. Roof Field: 1/4 inch per foot unless otherwise indicated on Drawings.
 - b. Saddles and Crickets: 1/2 inch per foot unless otherwise indicated on Drawings.
- D. Provide preformed saddles, crickets, tapered edge strips, and other insulation shapes where indicated for sloping to drain. Fabricate to slopes indicated.

2.8 INSULATION ACCESSORIES

- A. General: Furnish roof insulation accessories recommended by insulation manufacturer for intended use and compatible with membrane roofing.
- B. Fasteners: Factory-coated steel fasteners and metal or plastic plates complying with corrosion-resistance provisions in FM Approvals 4470, designed for fastening roof insulation to substrate, and acceptable to roofing system manufacturer.
- C. Insulation Adhesive: Insulation manufacturer's recommended adhesive formulated to attach roof insulation to substrate or to another insulation layer as follows:
 - 1. Bead-applied, low-rise, one-component or multicomponent urethane adhesive.
- D. Cover Board: Glass-mat, water-resistant gypsum substrate, ASTM C 1177, 1/4 inch thick, factory primed.
 - 1. Products: Subject to compliance with requirements, available products that may be incorporated into the Work include, but are not limited to, the following:
 - a. Georgia-Pacific Corporation; DensDeck Prime.
 - b. USG; Securock Glass-Mat Roof Board.

PART 3 - EXECUTION

3.1 EXAMINATION

- A. Examine substrates, areas, and conditions, with Installer present, for compliance with the following requirements and other conditions affecting performance of roofing system:
 - 1. Verify that roof openings and penetrations are in place and curbs are set and braced and that roof drain bodies are securely clamped in place.
 - 2. Verify that wood blocking, curbs, and nailers are securely anchored to roof deck at penetrations and terminations and that nailers match thicknesses of insulation.
 - 3. Verify that surface plane flatness and fastening of steel roof deck complies with requirements in Division 05 Section "Steel Deck."
- B. Proceed with installation only after unsatisfactory conditions have been corrected.

3.2 PREPARATION

- A. Clean substrate of dust, debris, moisture, and other substances detrimental to roofing installation according to roofing system manufacturer's written instructions. Remove sharp projections.
- B. Prevent materials from entering and clogging roof drains and conductors and from spilling or migrating onto surfaces of other construction. Remove roof-drain plugs when no work is taking place or when rain is forecast.

- C. Complete terminations and base flashings and provide temporary seals to prevent water from entering completed sections of roofing system at the end of the workday or when rain is forecast. Remove and discard temporary seals before beginning work on adjoining roofing.

3.3 SUBSTRATE BOARD

- A. Install substrate board with long joints in continuous straight lines, with end joints staggered not less than 24 inches in adjacent rows.
 - 1. At steel roof decks, install substrate board at right angle to flutes of deck.
 - a. Locate end joints over crests of steel roof deck.
 - 2. Tightly butt substrate boards together.
 - 3. Cut substrate board to fit tight around penetrations and projections, and to fit tight to intersecting sloping roof decks.
 - 4. Fasten substrate board to top flanges of steel deck to resist uplift pressure at corners, perimeter, and field of roof according to roofing system manufacturers' written instructions.

3.4 VAPOR-RETARDER/TEMPORARY ROOF INSTALLATION

- A. Self-Adhering-Sheet Vapor Retarder: Prime substrate if required by manufacturer. Install self-adhering-sheet vapor retarder over area to receive vapor retarder, side and end lapping each sheet a minimum of 3-1/2 and 6 inches, respectively.
 - 1. Extend vertically up parapet walls and projections to a minimum height equal to height of insulation and cover board.
 - 2. Seal laps by rolling.
- B. Completely seal vapor retarder at terminations, obstructions, and penetrations to prevent air movement into membrane roofing system.

3.5 INSULATION INSTALLATION

- A. Coordinate installing membrane roofing system components so insulation is not exposed to precipitation or left exposed at the end of the workday.
- B. Comply with membrane roofing system manufacturer's written instructions for installing roof insulation.
- C. Install tapered insulation under area of roofing to conform to slopes indicated.
- D. Install one or more layers of insulation under area of roofing to achieve required thickness. Where overall insulation thickness is 2.7 inches or greater, install 2 or more layers with joints of each succeeding layer staggered from joints of previous layer a minimum of 18 inches in each direction.

- E. Trim surface of insulation where necessary at roof drains so completed surface is flush and does not restrict flow of water.
- F. Install insulation with long joints of insulation in a continuous straight line with end joints staggered between rows, abutting edges and ends between boards. Fill gaps exceeding 1/4 inch with insulation.
 - 1. Cut and fit insulation within 1/4 inch of nailers, projections, and penetrations.
- G. Adhered Insulation Over Vapor Retarder/Temporary Roof: Adhere each layer of insulation to substrate in ribbons of bead-applied insulation adhesive, firmly pressing and maintaining insulation in place.
 - 1. Install bead foam adhesive parallel to insulation-board side edges in wet widths of 3/4 inch at 4 inches o.c.; 14 rows per 4'-0" width of insulation.
 - 2. Embed insulation into bead foam adhesive, with joints staggered minimum 18 inches from joints of first layer. Step into place and position; roll insulation with 90-lbf water roller to achieve positive contact and adhesion between adhesive and insulation board. Verify that no creeping occurs.
 - 3. Weight insulation down with 5-gal adhesive pails until bead foam adhesive has set; one in center and one on each corner, so that no cupping or lack of adhesion occurs. Insulation that 'bounces' or depresses under foot pressure is unacceptable.
- H. Install cover boards over insulation with long joints in continuous straight lines with end joints staggered between rows. Offset joints of insulation below a minimum of 18 inches in each direction. Set cover boards in ribbons of bead-applied insulation adhesive, firmly pressing and maintaining cover boards in place.
 - 1. Install bead foam adhesive parallel to edge of insulation board side edge in wet widths of 3/4 inch at 4 inches o.c.; 14 per 4'-0" width of insulation.
 - 2. Embed coverboard with full contact into bead foam adhesive. Step into place and position; roll with 90-lbf water roller. Verify that no creeping occurs. Weight with 5-gallon adhesive pails; one in the center and one on each corner to achieve positive contact and adhesion.

3.6 ADHERED MEMBRANE ROOFING INSTALLATION

- A. Adhere membrane roofing over area to receive roofing according to membrane roofing system manufacturer's written instructions. Unroll roofing membrane and allow to relax before installing.
 - 1. Do not crease field membrane.
- B. Start installation of membrane roofing in presence of membrane roofing system manufacturer's technical personnel.
- C. Accurately align roofing membrane and maintain uniform side and end laps of minimum dimensions required by manufacturer. Stagger end laps.

- D. Bonding Adhesive: Apply to substrate and underside of roofing membrane at rate required by manufacturer and allow to partially dry before installing roofing membrane. Do not apply bonding adhesive to splice area of roofing membrane.
 - 1. Roll membrane with large water filled roller to achieve 100-percent bonding.
- E. In addition to adhering, mechanically fasten membrane roofing securely at terminations, penetrations, and perimeters.
- F. Apply membrane roofing with side laps shingled with slope of roof deck where possible.
- G. Tape Seam Installation: Clean and prime both faces of splice areas, apply splice tape, and firmly roll side and end laps of overlapping membrane roofing according to manufacturer's written instructions to ensure a watertight seam installation. Apply lap sealant and seal exposed edges of membrane roofing terminations.
- H. Leave seams uncovered until inspected by roofing system manufacturer.
- I. Repair tears, voids, and lapped seams in roofing that does not meet requirements.
- J. Spread sealant or mastic bed over deck drain flange at deck drains and securely seal roofing membrane in place with clamping ring.
- K. Install membrane roofing and auxiliary materials to tie in to existing membrane roofing to maintain weather-tightness of transition and to not void warranty for existing membrane roofing system.

3.7 BASE FLASHING INSTALLATION

- A. Install sheet flashings and preformed flashing accessories and adhere to substrates according to membrane roofing system manufacturer's written instructions.
- B. Apply bonding adhesive to substrate and underside of sheet flashing at required rate and allow to partially dry. Do not apply bonding adhesive to seam area of flashing.
- C. Flash penetrations and field-formed inside and outside corners with cured or uncured sheet flashing.
- D. Clean splice areas, apply splicing cement, and firmly roll side and end laps of overlapping sheets to ensure a watertight seam installation. Apply lap sealant and seal exposed edges of sheet flashing terminations.
- E. Terminate and seal top of sheet flashings and mechanically anchor to substrate through termination bars.

3.8 FIELD QUALITY CONTROL

- A. Final Roof Inspection: Arrange for roofing system manufacturer's technical personnel to inspect roofing installation on completion and submit report to Architect.

- B. Repair or remove and replace components of membrane roofing system where test results or inspections indicate that they do not comply with specified requirements.
- C. Additional inspections, at Contractor's expense, will be performed to determine compliance of replaced or additional work with specified requirements.

3.9 PROTECTING AND CLEANING

- A. Protect membrane roofing system from damage and wear during remainder of construction period. When remaining construction will not affect or endanger roofing, inspect roofing for deterioration and damage, describing its nature and extent in a written report, with copies to Architect and Owner.
 - 1. Provide 1/2-inch thick plywood walk boards on 1-inch thick expanded polystyrene in areas of heavy traffic and take other measures necessary to prevent damage to roofing system.
- B. Correct deficiencies in or remove membrane roofing system that does not comply with requirements, repair substrates and repair or reinstall membrane roofing system to a condition free of damage and deterioration at time of Substantial Completion and according to warranty requirements.
- C. Clean overspray and spillage from adjacent construction using cleaning agents and procedures recommended by manufacturer of affected construction.

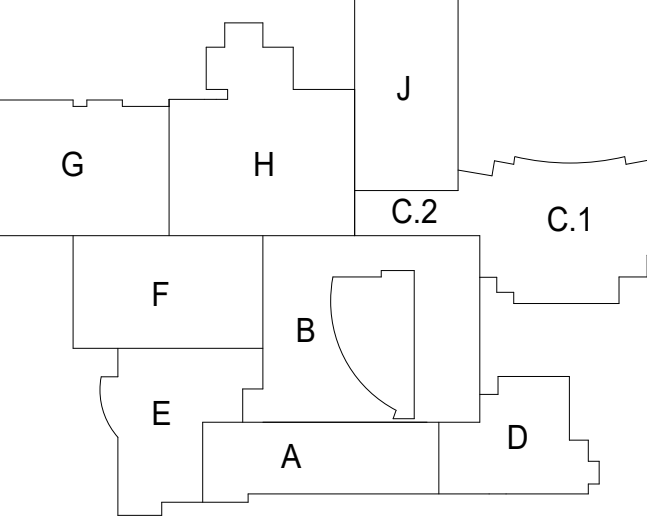
END OF SECTION 075323



COMMUNITY HIGH SCHOOL
DISTRICT 99

Wight

Wight & Company
wightco.com
2500 North Frontage Road
Darien, IL 60561
P 630.969.7000
F 630.969.7979



**NOT FOR
CONSTRUCTION**

24	ISSUED FOR ADDENDUM 2 - BG7	06.27.2019
	ISSUED FOR BID GROUP 7 - PHASE B	06.07.2019
	ISSUED FOR 75% CONSTRUCTION DOCUMENTS	05.10.2019
	ISSUED FOR BID GROUP 6 - PHASE B	05.10.2019
	ISSUED FOR CONSTRUCTION - PHASE A	05.08.2019
8	ISSUED FOR ADDENDUM 3 - BC3	03.29.2019
	ISSUED FOR CODE CONSULTANT REVIEW	02.20.2019
	ISSUED FOR BID GROUP 2 - PHASE A	02.06.2019
	ISSUED FOR BC 1 - PHASE A	01.18.2019
	ISSUED FOR 50% CONSTRUCTION DOCUMENTS - PHASE A	11.28.2018
	ISSUED FOR SCHEMATIC DESIGN - PHASE A	11.05.2018
	ISSUED FOR SCHEMATIC DESIGN - PHASE A	09.19.2018

REV ISSUE DATE

**MFP
IMPLEMENTATION -
SOUTH**

1436 NORFOLK STREET
DOWNERS GROVE, IL 60516

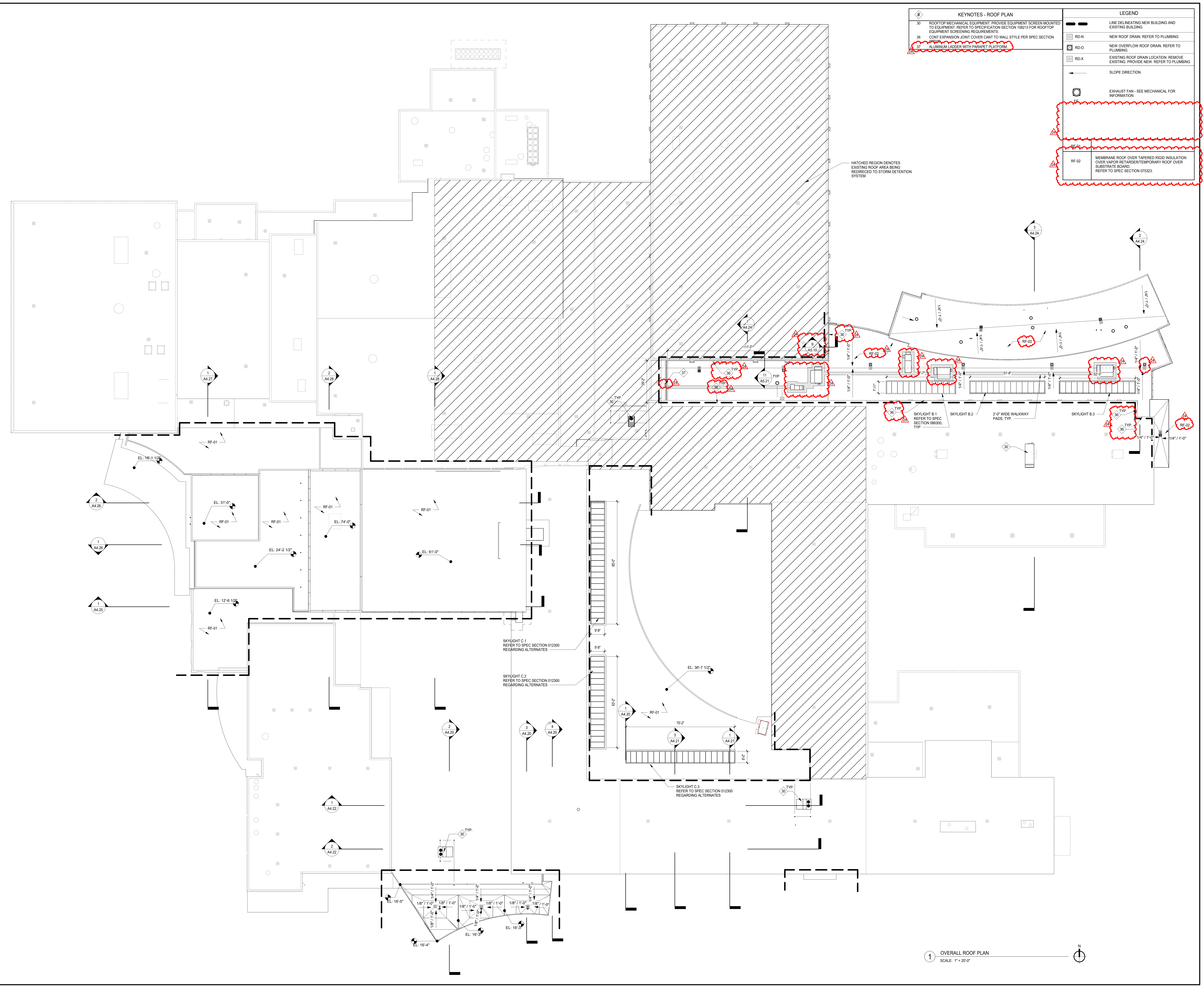
OVERALL ROOF PLAN

Project Number:
5274-42
Drawn By:
A.SASSILA
Sheet:

A2.04

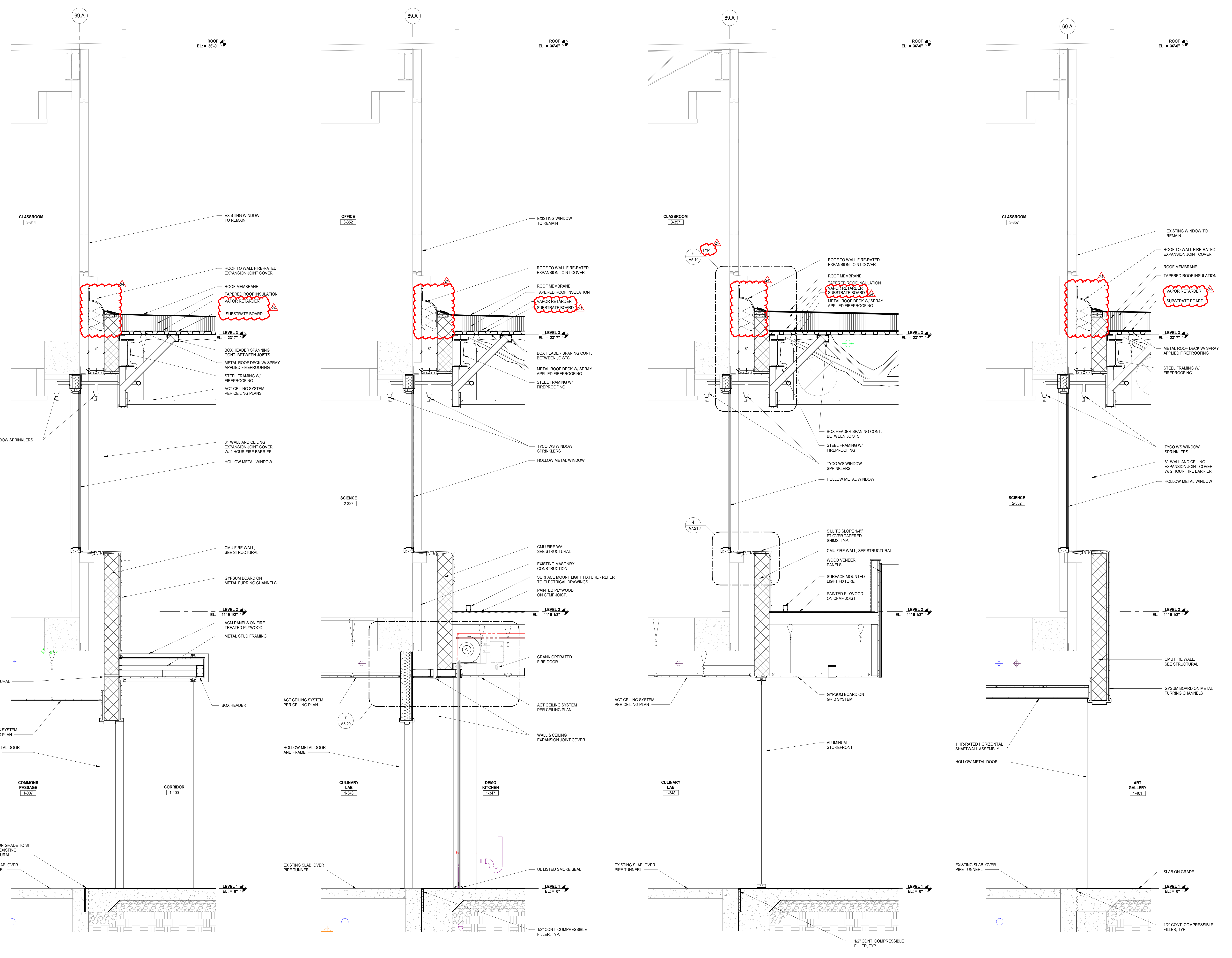
KEYNOTES - ROOF PLAN		LEGEND	
30	ROOFTOP MECHANICAL EQUIPMENT PROVIDE EQUIPMENT SCREEN MOUNTED TO EQUIPMENT. REFER TO SPECIFICATION SECTION 100513 FOR ROOFTOP EQUIPMENT SCREENING REQUIREMENTS.		LINE DELINEATING NEW BUILDING AND EXISTING BUILDING
36	JOINT EXPANSION JOINT COVER CANT TO WALL STYLE PER SPEC SECTION 07300.		NEW ROOF DRAIN. REFER TO PLUMBING
37	ALUMINUM LADDER WITH PARAPET PLATFORM		NEW OVERFLOW ROOF DRAIN. REFER TO PLUMBING
			EXISTING ROOF DRAIN LOCATION, REMOVE EXISTING. PROVIDE NEW. REFER TO PLUMBING
			SLOPE DIRECTION
			EXHAUST FAN - SEE MECHANICAL FOR INFORMATION

HATCHED REGION DENOTES EXISTING ROOF AREA BEING REDIRECTED TO STORM DETENTION SYSTEM.



1 OVERALL ROOF PLAN
SCALE: 1" = 20'-0"

6/27/2019 3:50:27 PM
C:\Users\ssassila\Documents\5274-42_DSS_Arch_2019_Central_basemat.rvt
Wight & Co. © Copyright 2019 All rights reserved. No part of these documents may be reproduced, stored, or transmitted in any form or by any means, electronic, mechanical, photocopying, recording, or otherwise, without the prior written consent of Wight & Co.



NOT FOR CONSTRUCTION

24	ISSUED FOR ADDENDUM 2 - B67	06.27.2019
	ISSUED FOR BID GROUP 7 - PHASE B	06.07.2019
	ISSUED FOR 75% CONSTRUCTION DOCUMENTS	05.10.2019
	ISSUED FOR BID GROUP 6 - PHASE B	05.10.2019
	ISSUED FOR DESIGN DEVELOPMENT - PHASE B	03.11.2019
	ISSUED FOR CODE CONSULTANT REVIEW	02.20.2019
	ISSUED FOR SCHEMATIC DESIGN	11.05.2018
REV	ISSUE	DATE

MFP IMPLEMENTATION - SOUTH

1436 NORFOLK STREET
DOWNERS GROVE, IL 60516

EXTERIOR WALL SECTIONS & DETAILS - PHASE B

Project Number:
5274-42
Drawn By:
A.SASSILA
Sheet:

02/20/19 8:17:46 PM
 C:\Users\jasonh\Documents\25274-42_DSS_Arch_2019_Central_basement.rvt
 Wight & Co. © Copyright 2019 All rights reserved. No part of these documents may be reproduced, stored, or transmitted in any form or by any means, electronic, mechanical, photocopying, recording, or otherwise, without the prior written consent of Wight & Co.

4 WALL SECTION - FIRE WALL @ COMMONS & NORTHEAST ADDITION SCALE: 3/4" = 1'-0"
 3 WALL SECTION - FIRE SEPARATION @ NEW CULINARY ARTS ROOM SCALE: 3/4" = 1'-0"
 2 WALL SECTION - FIRE SEPARATION @ NEW CULINARY ARTS ROOM DOOR SCALE: 3/4" = 1'-0"
 1 WALL SECTION - FIRE SEPARATION AT CORRIDOR DOORS SCALE: 3/4" = 1'-0"

**NOT FOR
CONSTRUCTION**

24	ISSUED FOR ADDENDUM 2 - B67	06.27.2019
	ISSUED FOR BID GROUP 7 - PHASE B	06.07.2019
	ISSUED FOR 75% CONSTRUCTION DOCUMENTS	05.10.2019
	ISSUED FOR BID GROUP 6 - PHASE B	05.10.2019
	ISSUED FOR DESIGN DEVELOPMENT - PHASE B	03.11.2019
	ISSUED FOR CODE CONSULTANT REVIEW	02.20.2019
	ISSUED FOR SCHEMATIC DESIGN	11.05.2018
REV	ISSUE	DATE

**MFP
IMPLEMENTATION -
SOUTH**

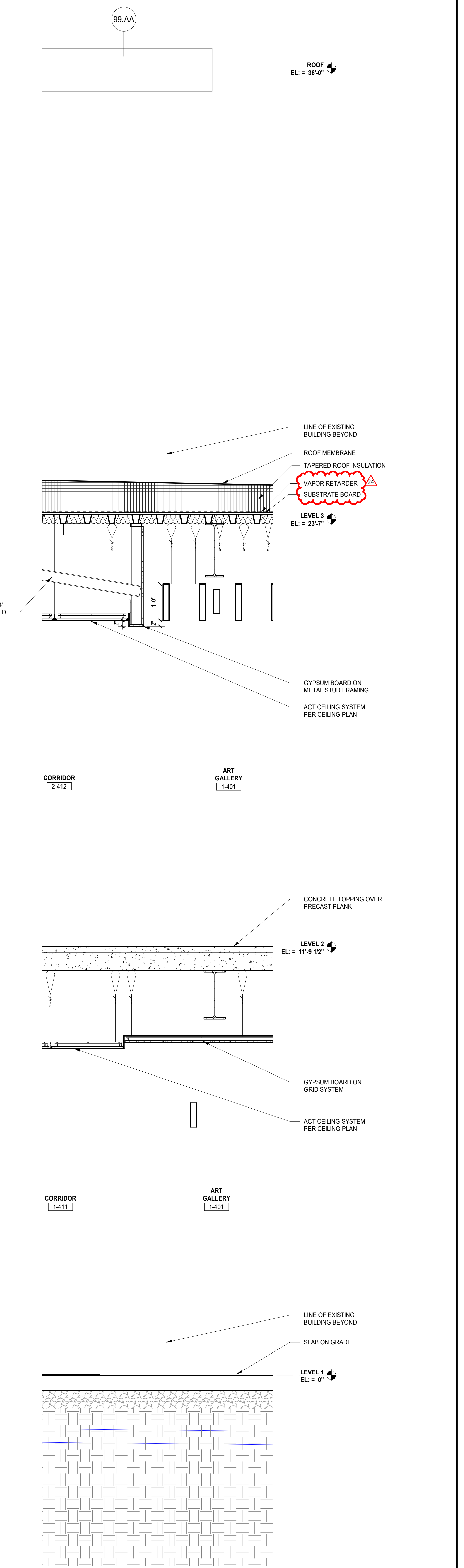
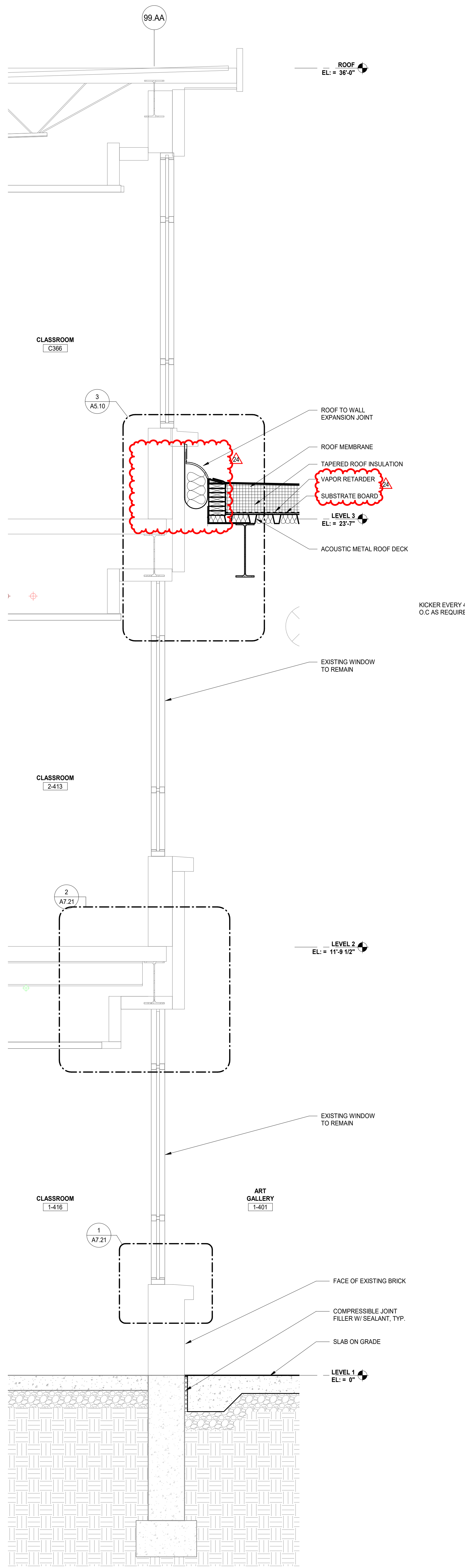
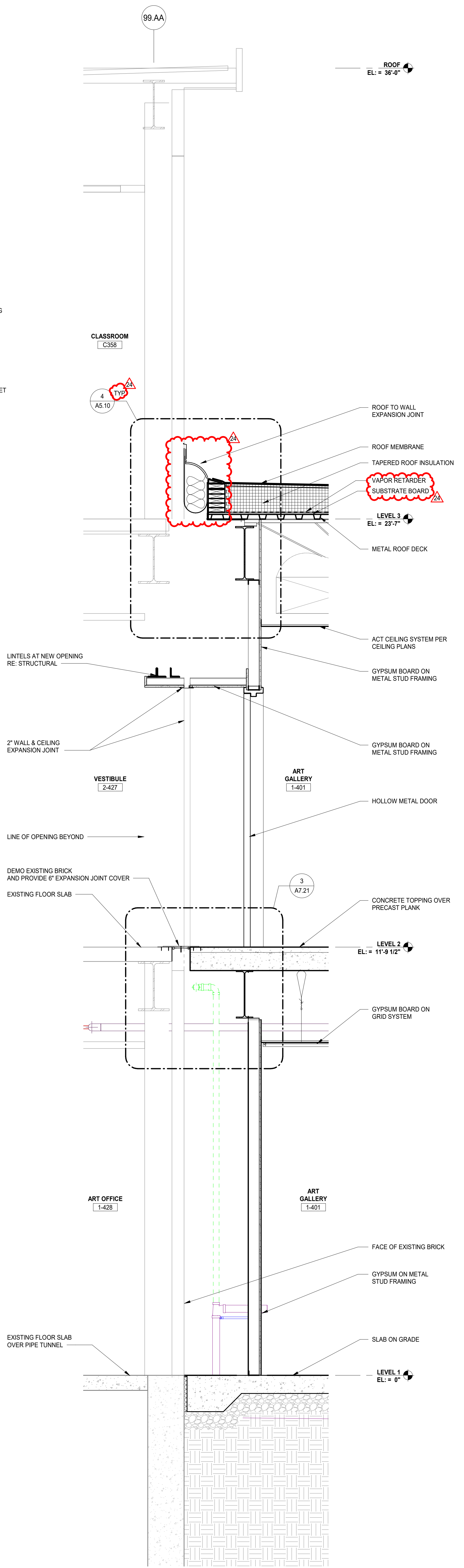
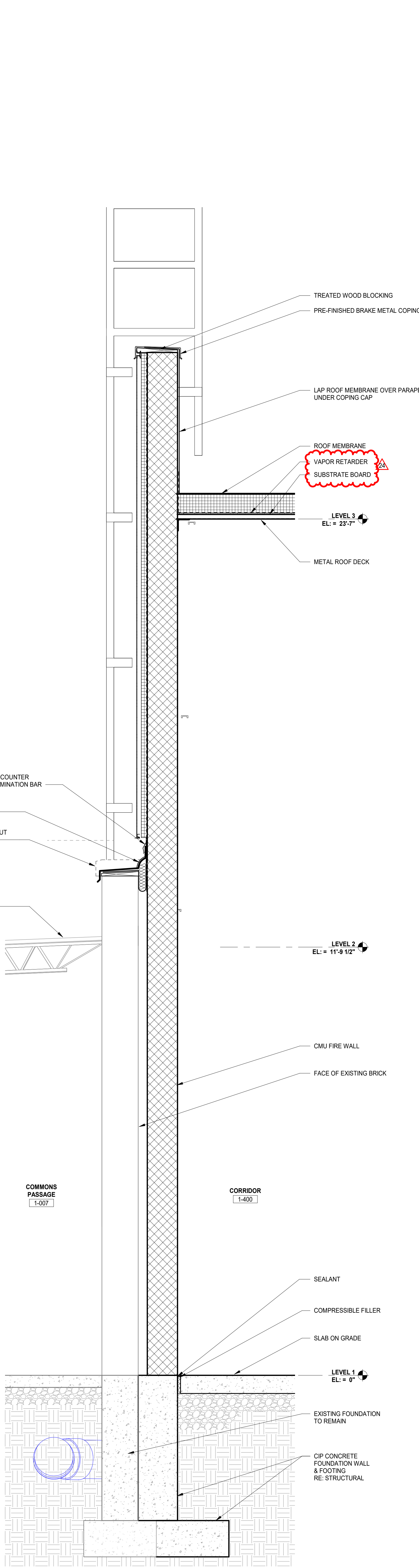
1436 NORFOLK STREET
DOWNERS GROVE, IL 60516

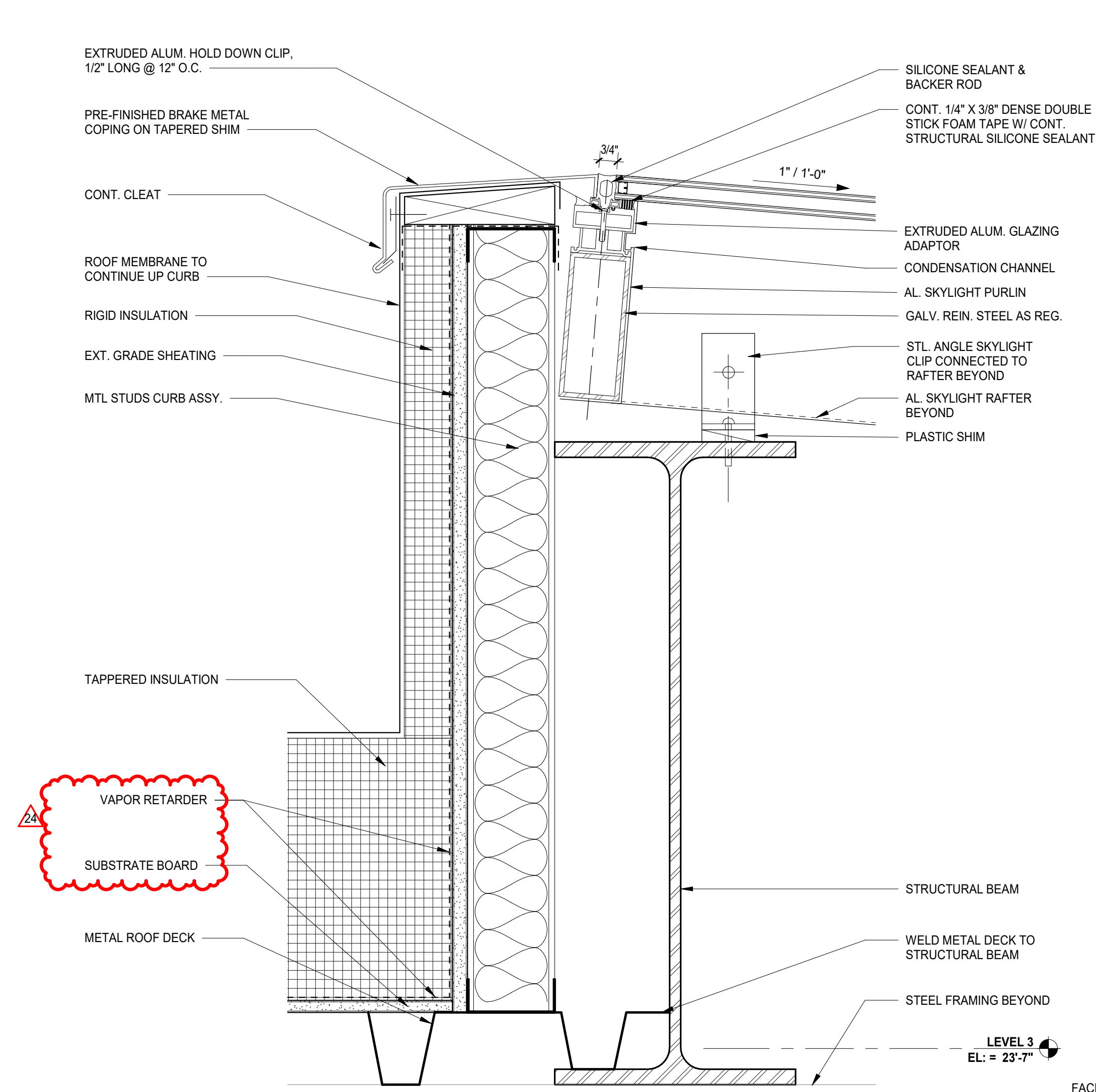
**EXTERIOR WALL
SECTIONS & DETAILS -
PHASE B**

Project Number:
5274-42
Drawn By:
A.SASSILA

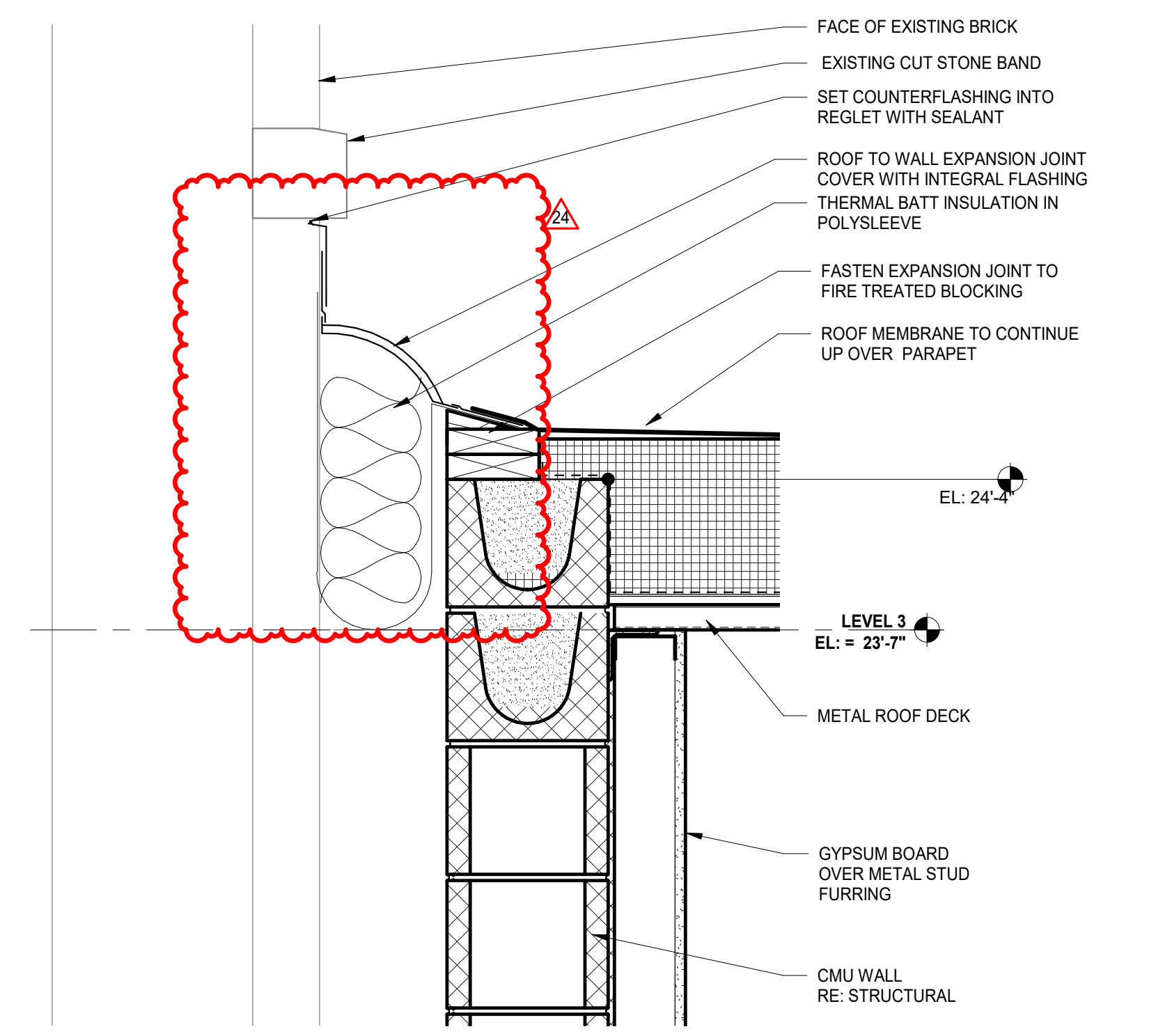
Sheet:

6/27/2019 8:57:48 PM
 C:\Users\ssassila\Documents\5274-42_DSS_Arch_2019_Central_Implem.rvt
 Wight & Co. © Copyright 2018 All rights reserved. No part of these documents may be reproduced, stored, or transmitted in any form or by any means, electronic, mechanical, photocopying, recording, or otherwise, without the prior written consent of Wight & Co.

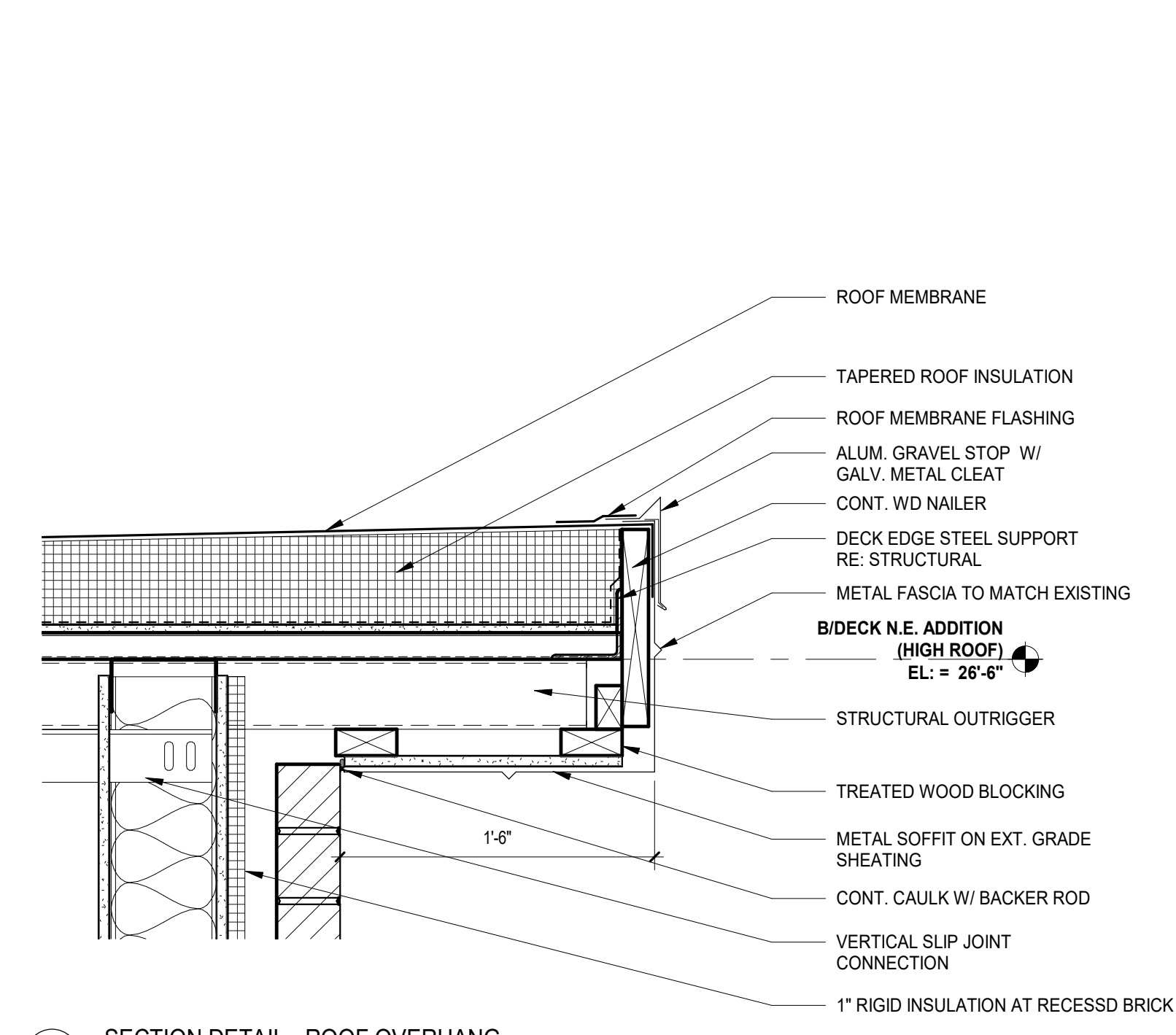




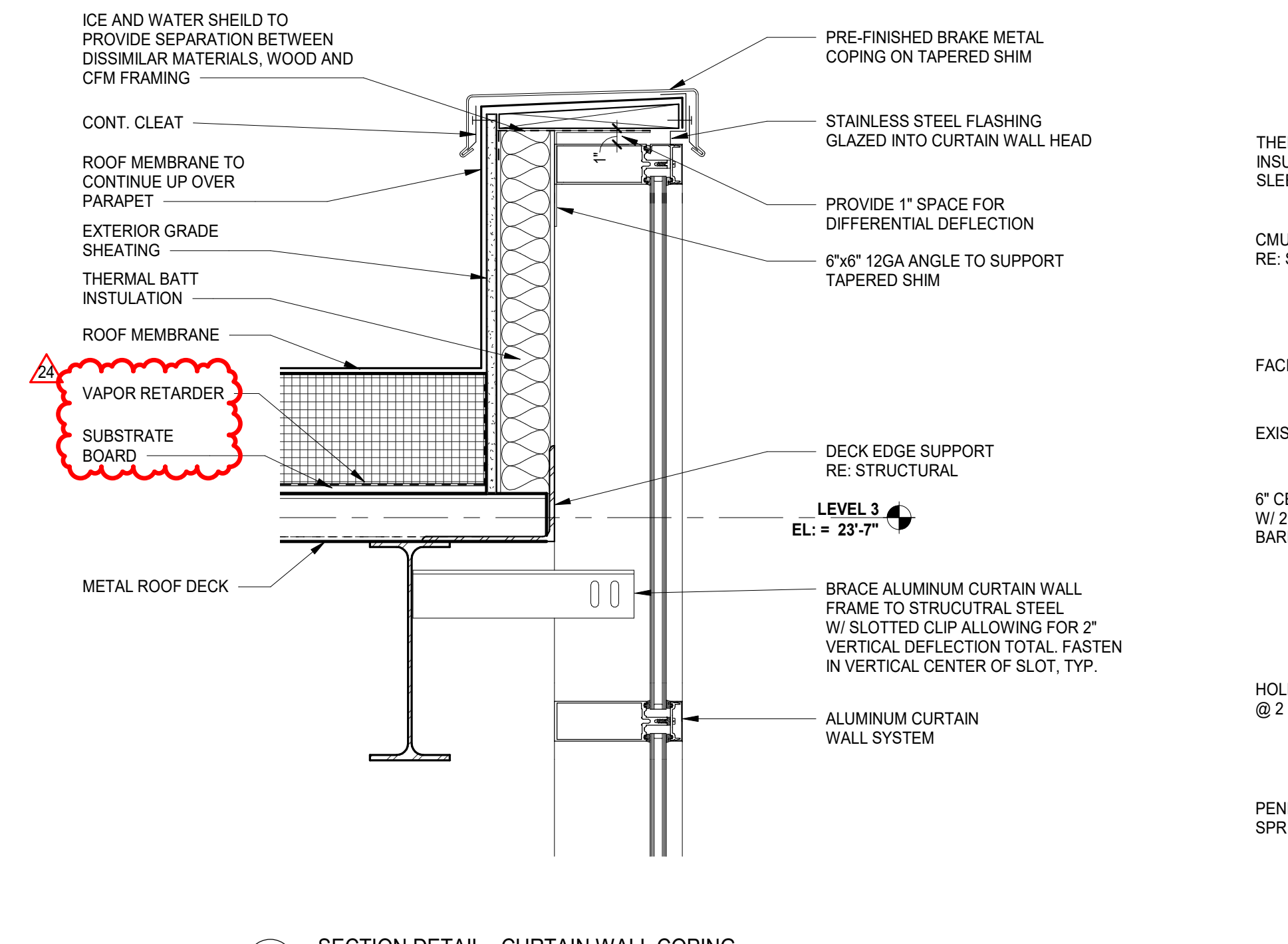
10 SECTION - SKYLIGHT @ HIGH SIDE
SCALE: 3" = 1'-0"



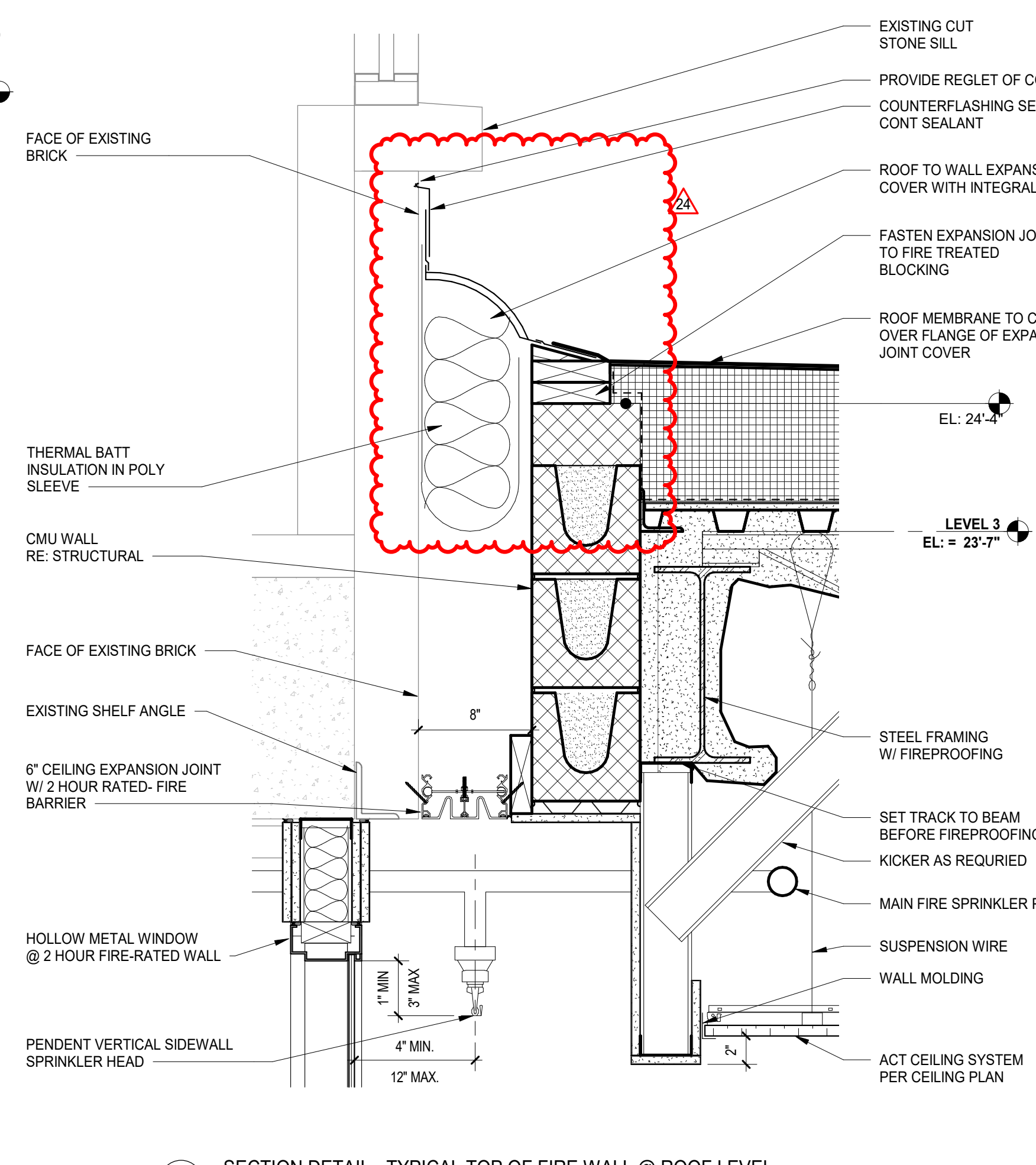
9 WALL DETAIL - ROOF JOINT AT EXISTING WALL
SCALE: 1 1/2" = 1'-0"



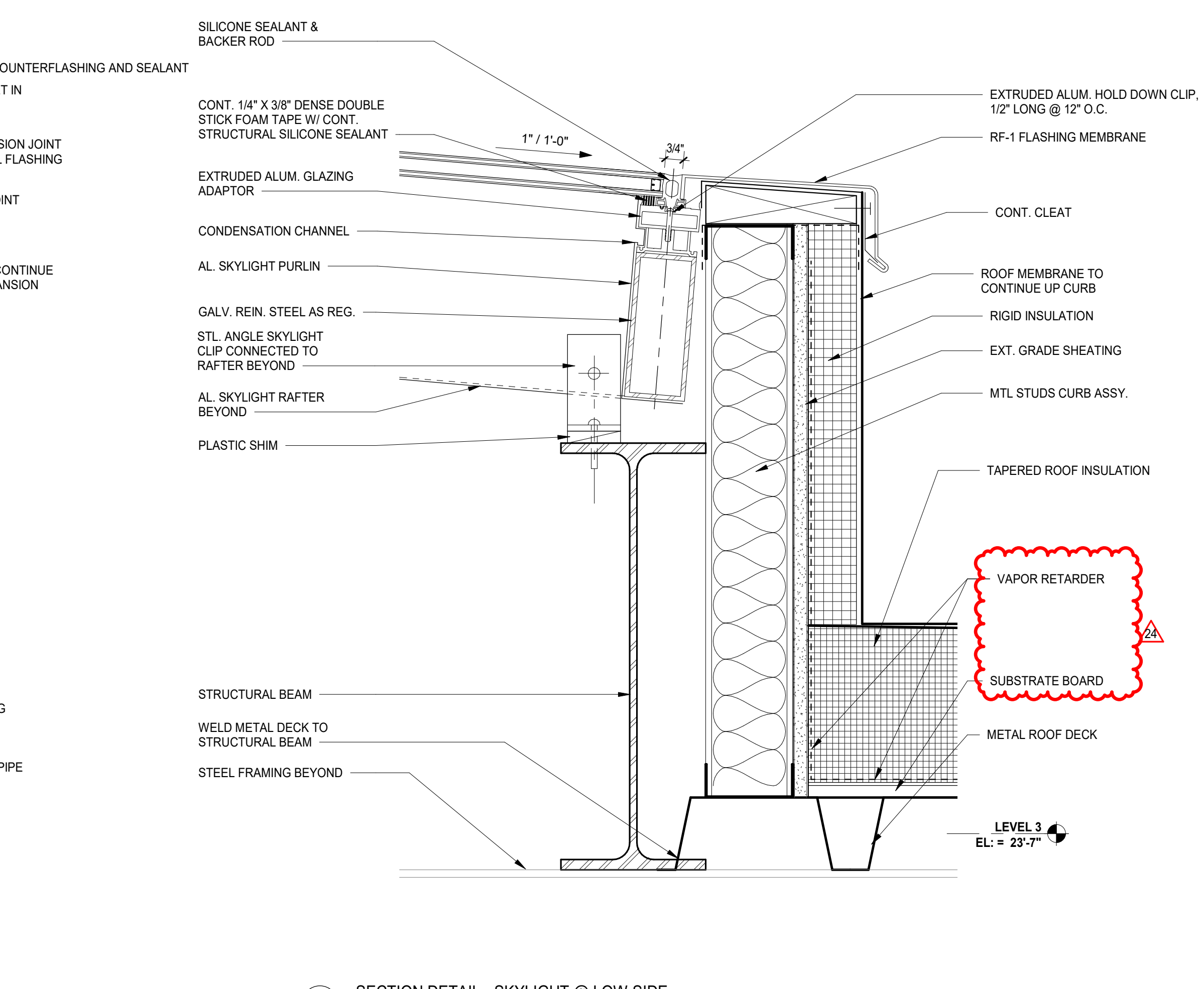
8 SECTION DETAIL - ROOF OVERHANG
SCALE: 1 1/2" = 1'-0"



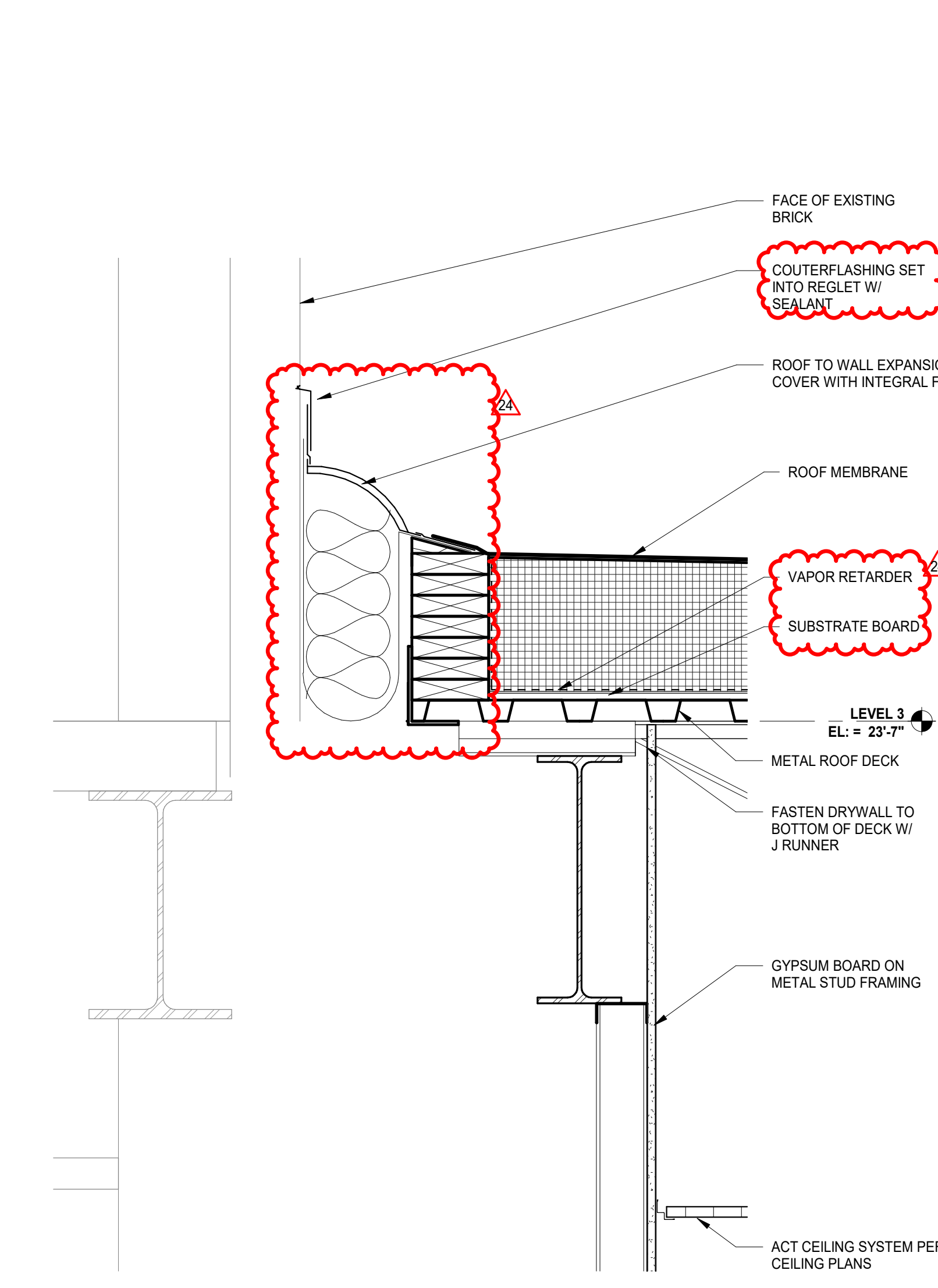
7 SECTION DETAIL - CURTAIN WALL COPING
SCALE: 1 1/2" = 1'-0"



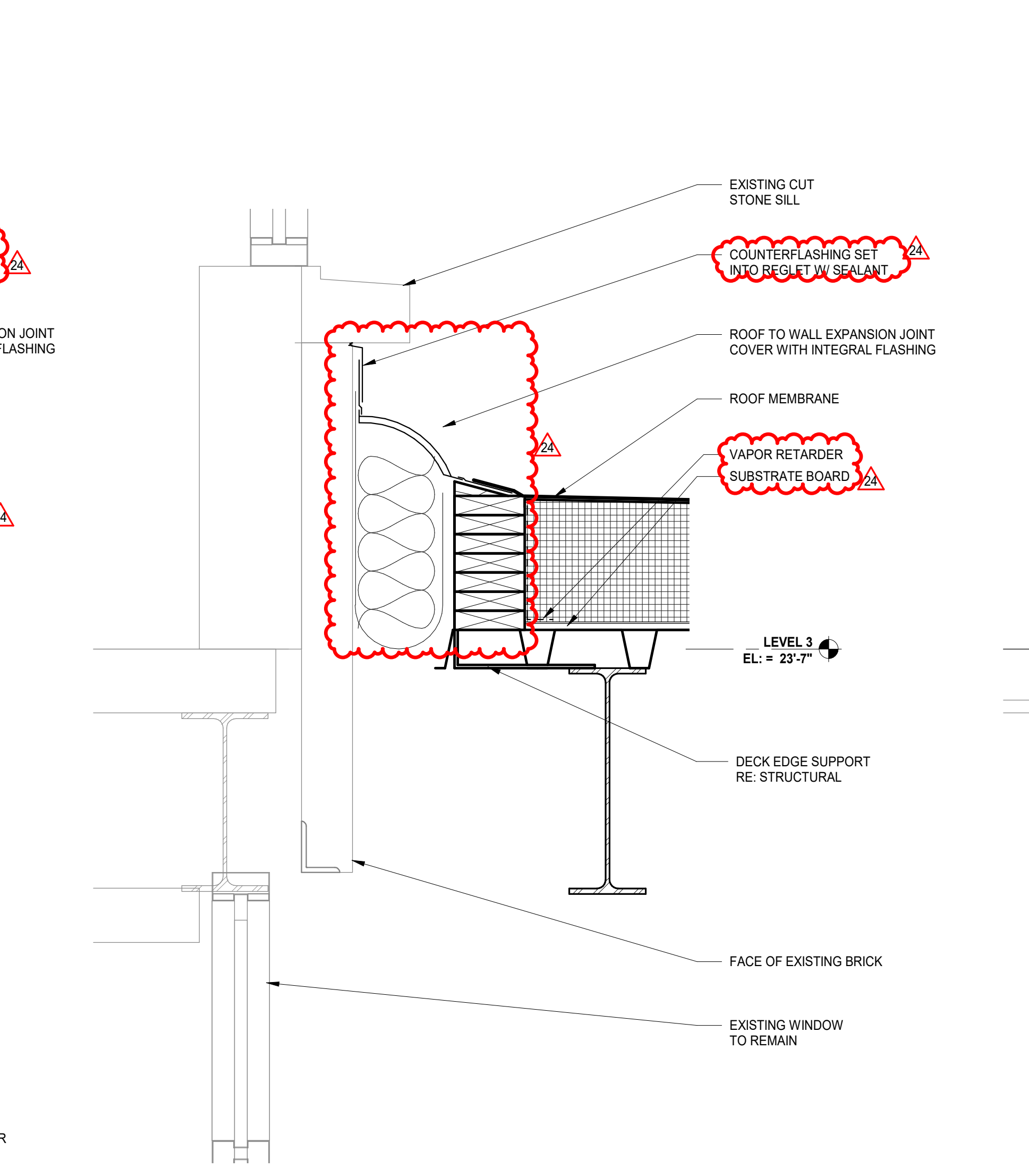
6 SECTION DETAIL - TYPICAL TOP OF FIRE WALL @ ROOF LEVEL
SCALE: 1 1/2" = 1'-0"



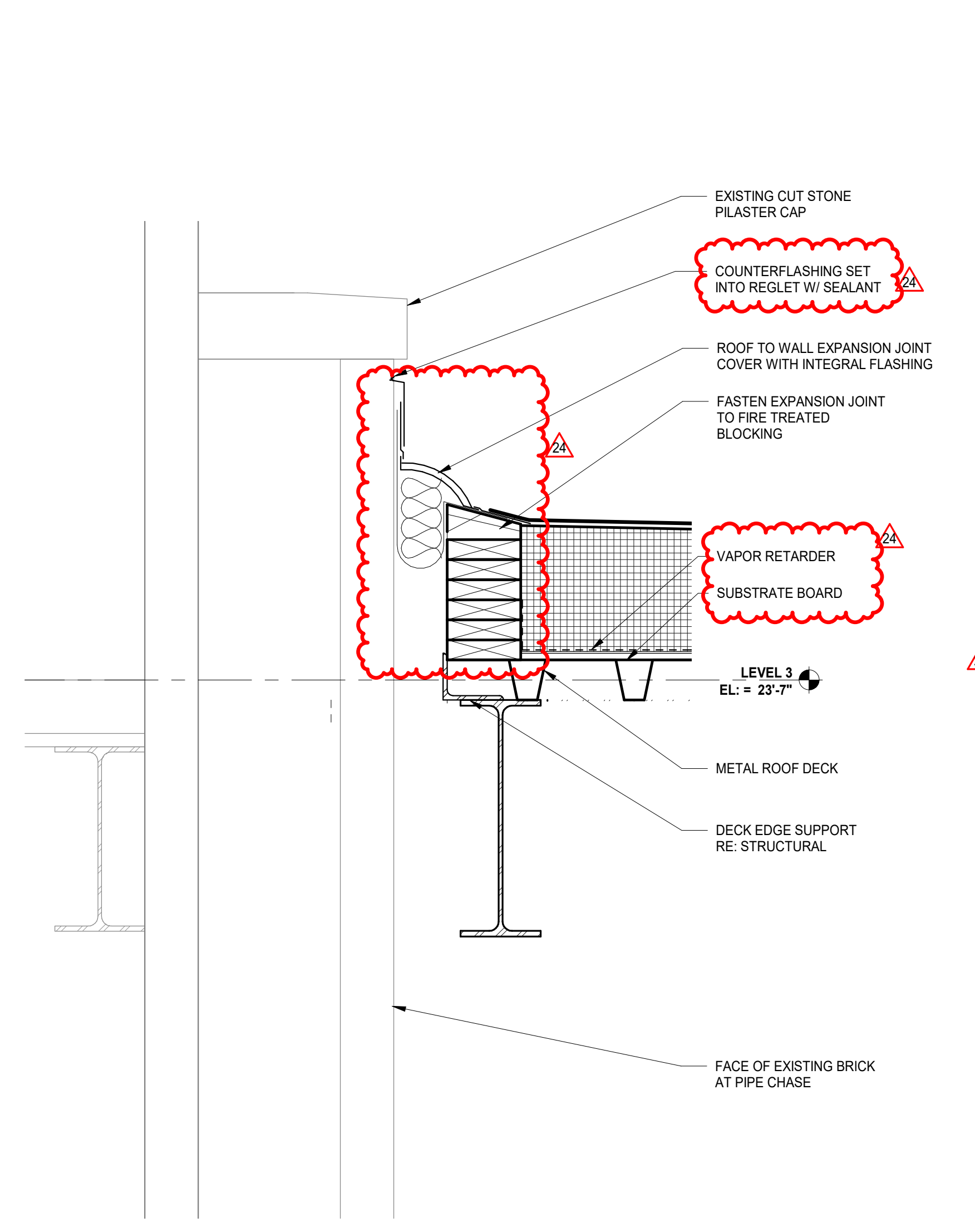
5 SECTION DETAIL - SKYLIGHT @ LOW SIDE
SCALE: 3" = 1'-0"



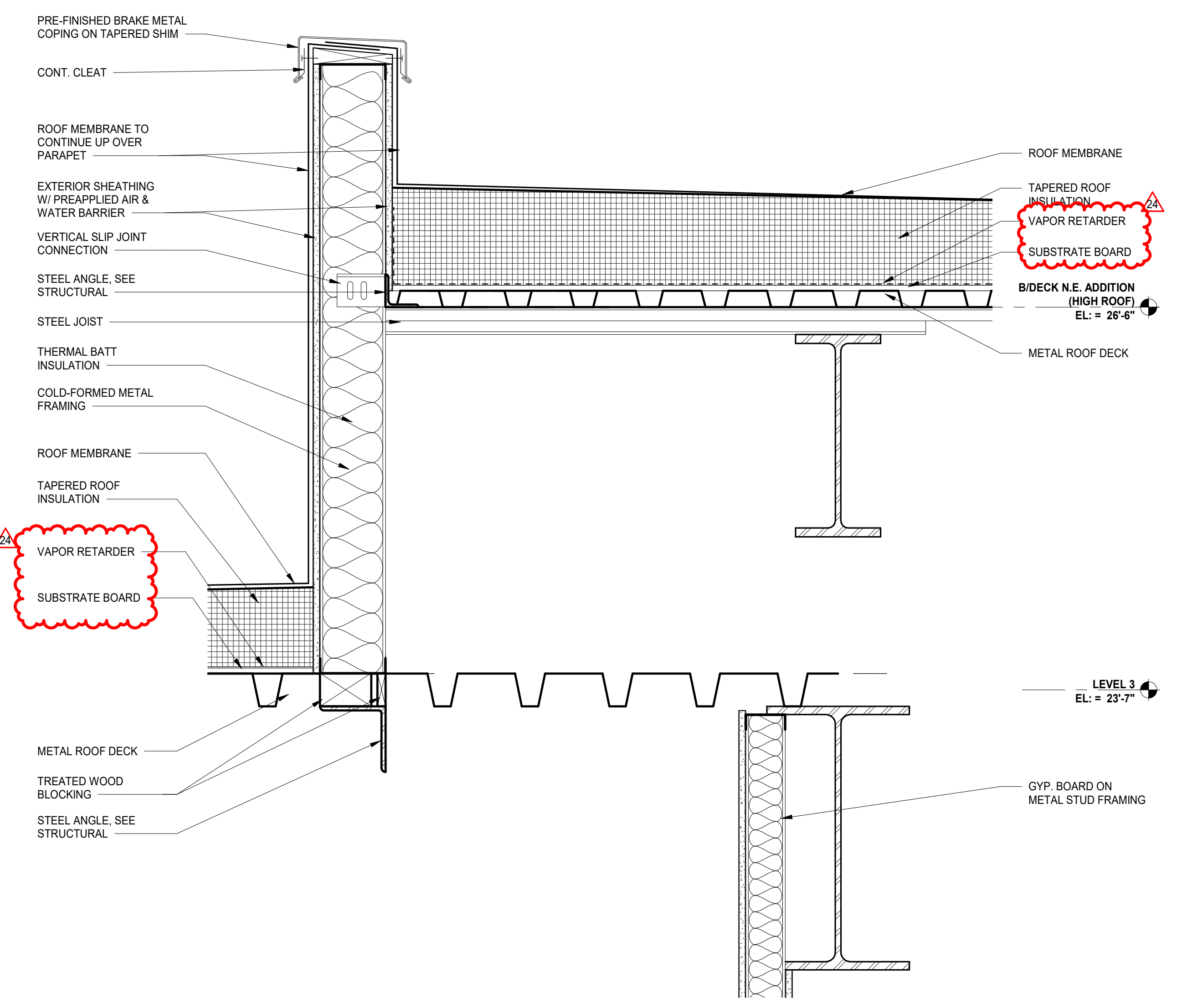
4 SECTION DETAIL - VERTICAL EXTENSION AT OPAQUE WALL
SCALE: 1 1/2" = 1'-0"



3 SECTION DETAIL - WINDOW SILL @ ROOF LEVEL
SCALE: 1 1/2" = 1'-0"



2 SECTION DETAIL - TOP OF WALL @ PILASTER
SCALE: 1 1/2" = 1'-0"



1 SECTION - NORTHEAST ADDITION ROOF DETAIL
SCALE: 1 1/2" = 1'-0"

NOT FOR CONSTRUCTION

24	ISSUED FOR ADDENDUM 2 - BGT	06.27.2019
B	ISSUED FOR BID GROUP 7 - PHASE	06.07.2019
B	ISSUED FOR 75% CONSTRUCTION DOCUMENTS	05.10.2019
B	ISSUED FOR BID GROUP 6 - PHASE	05.10.2019
B	ISSUED FOR DESIGN DEVELOPMENT - PHASE B	03.11.2019
REV	ISSUE	DATE

MFP IMPLEMENTATION - SOUTH

1436 NORFOLK STREET
DOWNERS GROVE, IL 60516

EXTERIOR WALL SECTIONS & DETAILS - PHASE B

Project Number:
5274-42
Drawn By:
A.SASSILA
Sheet:

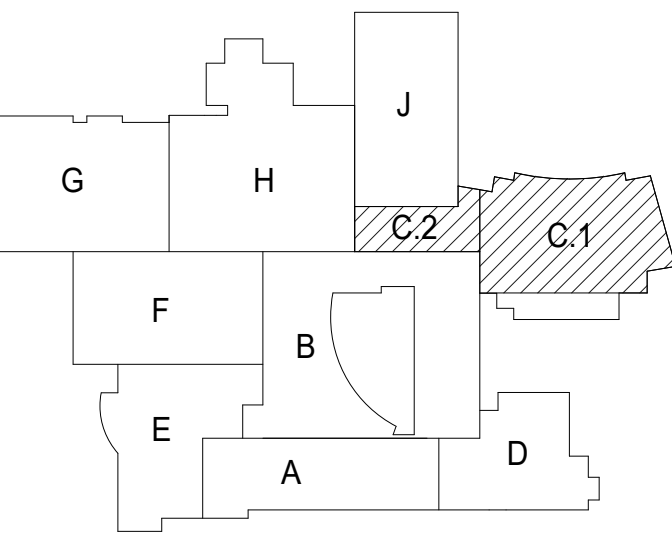
6/27/2019 8:57:05 AM
 C:\Users\ssassila\Documents\5274-42_DWG_A5.10_2019_Central_bspower.rvt
 Wight & Co. © Copyright 2019 All rights reserved. No part of these documents may be reproduced, stored, or transmitted in any form or by any means, electronic, mechanical, photocopying, recording or otherwise, without the prior written consent of Wight & Co.



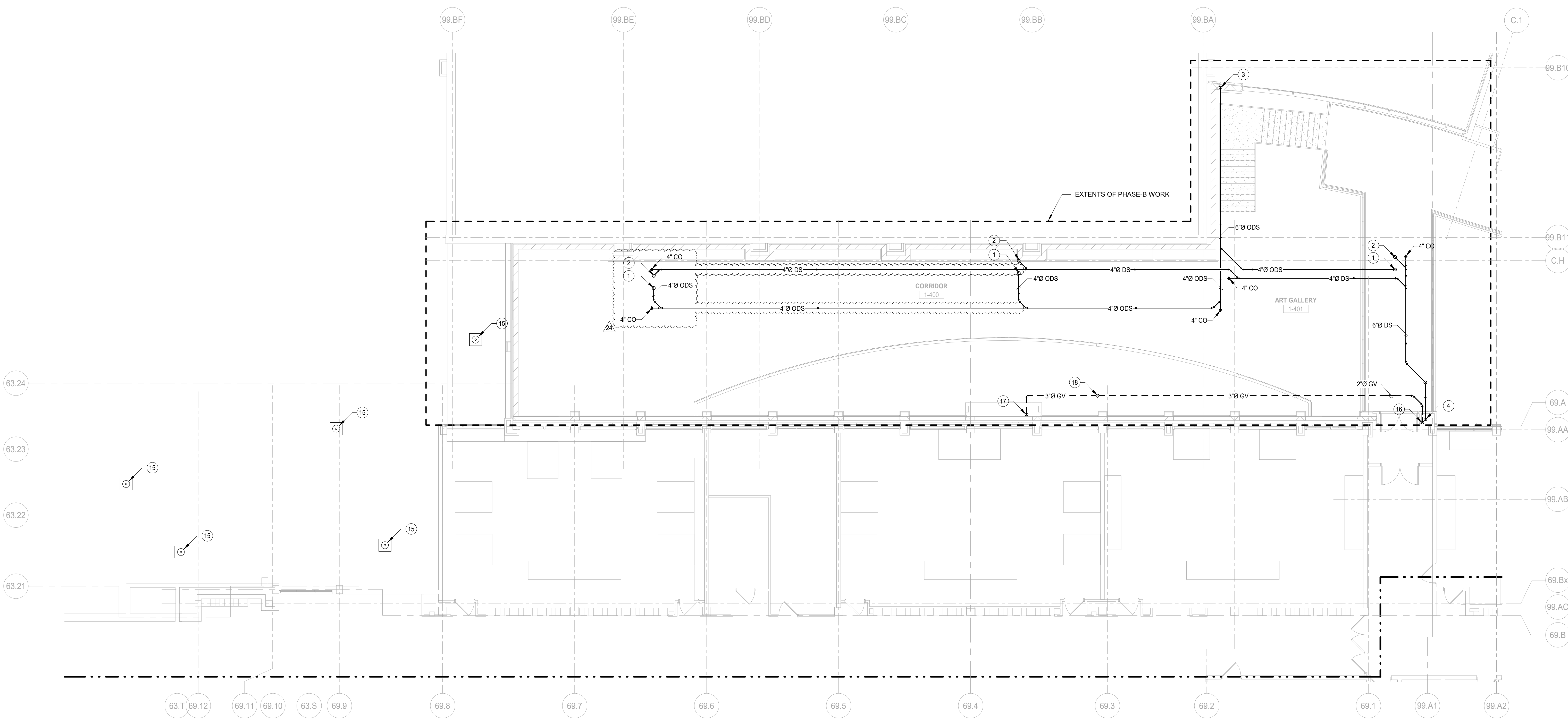
COMMUNITY HIGH SCHOOL
DISTRICT 99

Wight

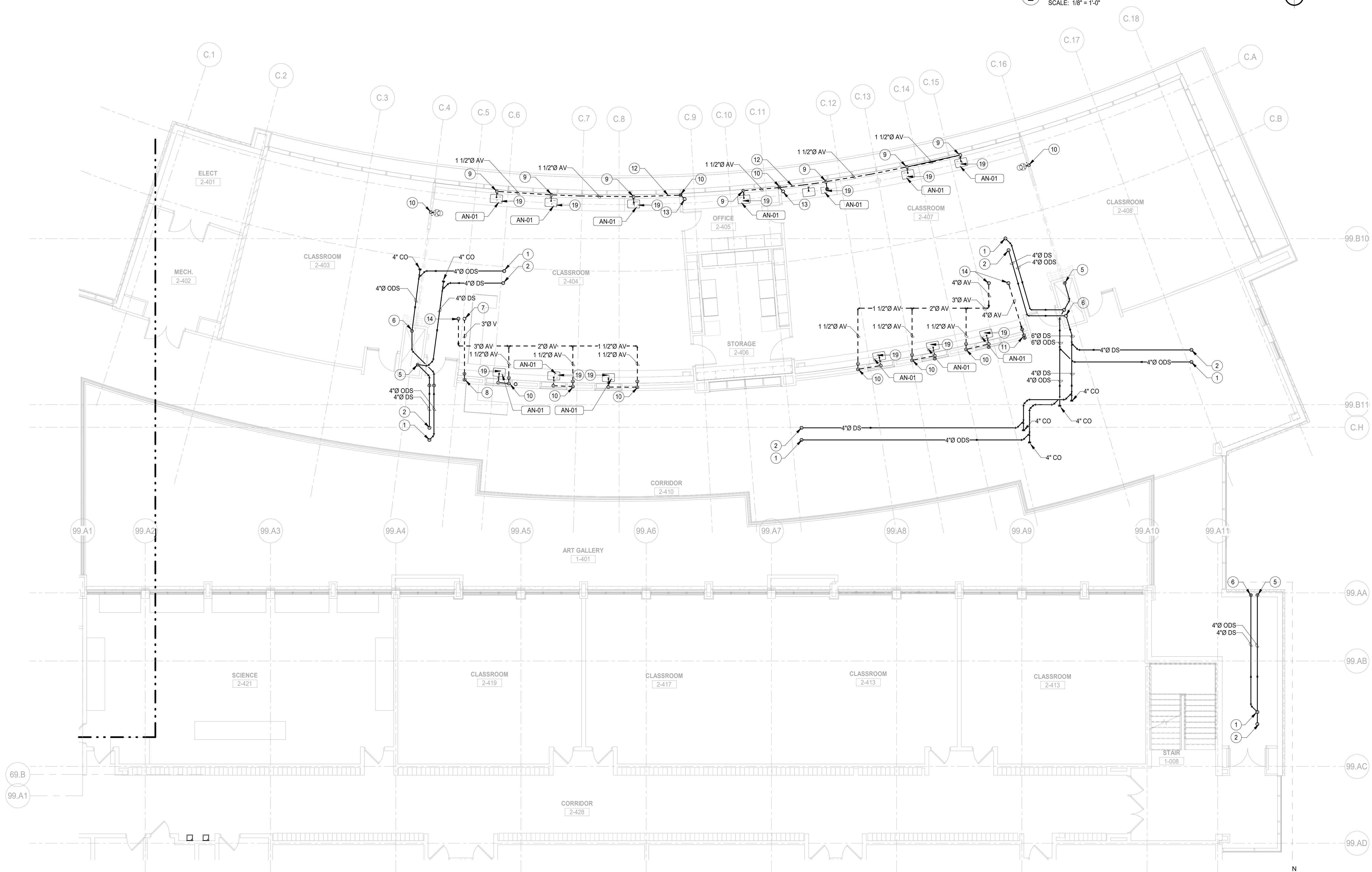
Wight & Company
wightco.com
2500 North Frontage Road
Danier, IL 60561
P 630.969.7000
F 630.969.7979



#	KEY NOTES
1	4" ODS UP TO 4" ORD-1
2	4" ODS UP TO 4" RD-1
3	4" ODS DN
4	4" ODS DN
5	6" ODS DN
6	6" ODS DN
7	4" V UP TO 4" VTR-1
8	3" V UP DN
9	1 1/2" AV UP TO HEIGHT OF 42"
10	1 1/2" AV UP
11	3" AV UP DN
12	2" AV TO BE ROUTED AT THE HEIGHT OF 42"
13	3" AV UP TO 3" VTR-1
14	4" AV UP TO 4" VTR-1
15	EXISTING ROOF DRAINS TO REMAIN
16	2" V DN
17	3" V DN
18	4" GV UP TO 4" VTR-1
19	ACID NEUTRALIZER TO BE LOCATED IN CABINETS, COORDINATE LOCATION AND INVERT ELEVATIONS WITH MAIN



2 SANITARY & DRAINAGE FLOOR PLAN - LEVEL 2 AREA C.2
SCALE: 1/8" = 1'-0"



1 SANITARY & DRAINAGE FLOOR PLAN - LEVEL 2 AREA C.1
SCALE: 1/8" = 1'-0"

**NOT FOR
CONSTRUCTION**

REV	ISSUE	DATE
24	ISSUED FOR ADDENDUMS - BG7	06.27.2019
	ISSUED FOR BID - BID GROUP F	06.07.2019
	ISSUED FOR 75% CD - PHASE B	05.10.2019
	ISSUED FOR 50% CD - PHASE B	04.12.2019

**MFP
IMPLEMENTATION -
SOUTH**

1436 NORFOLK STREET
DOWNERS GROVE, IL 60516

**SANITARY & DRAINAGE
FLOOR PLAN - LEVEL 2
AREA C**

Project Number:
5274-42
Drawn By:
E. AGUILAR
Sheet:

P1.12C.b

6/27/2019 8:42:07 AM
C:\Users\aguilard\Documents\10-5274-42_OSS_MFP-FP_2019_General_regular.rvt
Wight & Co. © Copyright 2018 All rights reserved. No part of these documents may be reproduced, stored, or transmitted in any form or by any means, electronic, mechanical, photocopying, recording, or otherwise, without the prior written consent of Wight & Co.

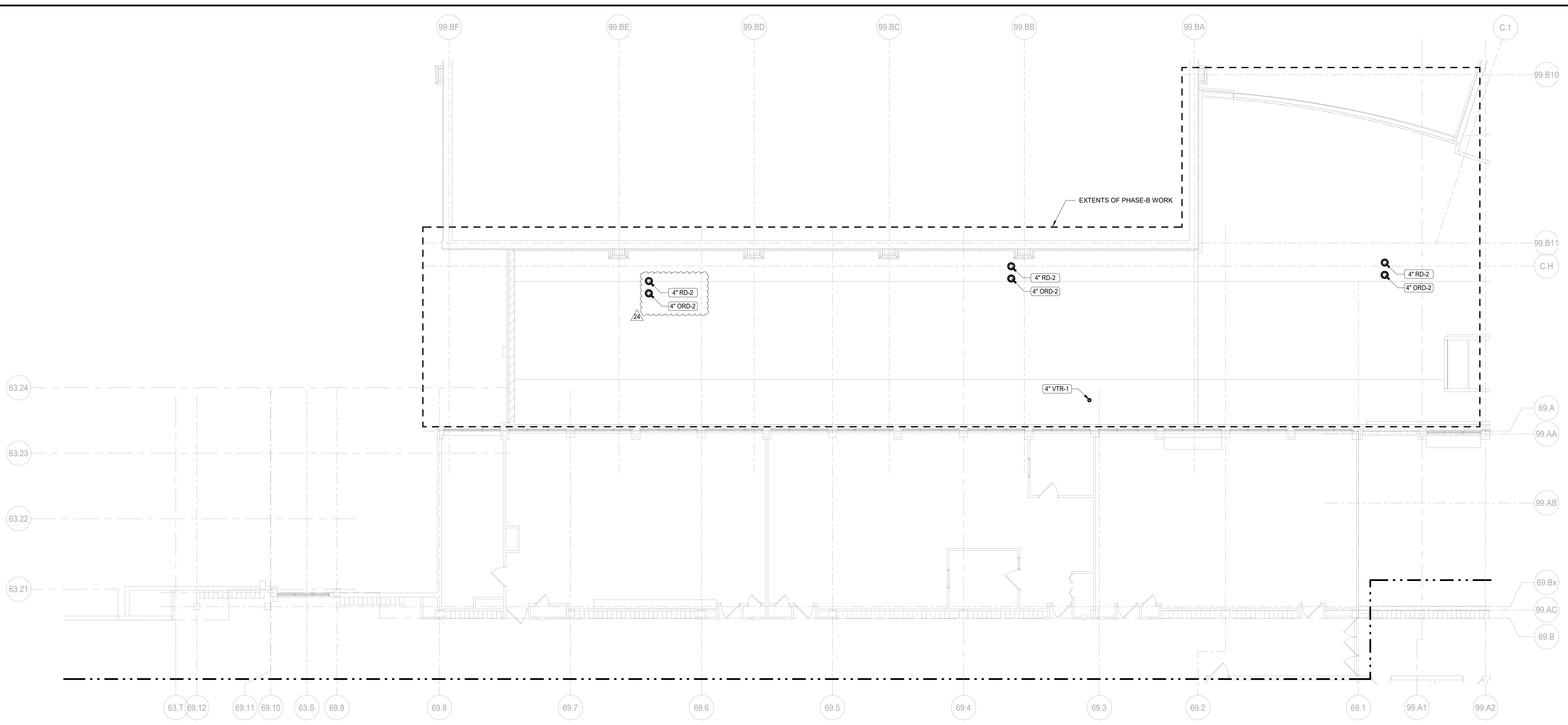
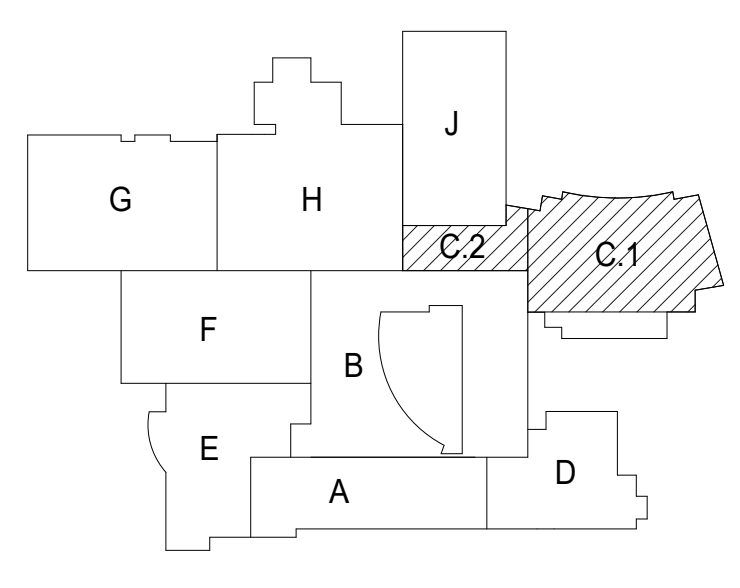
#	KEY NOTES
1	EXISTING ROOF DRAINS TO REMAIN



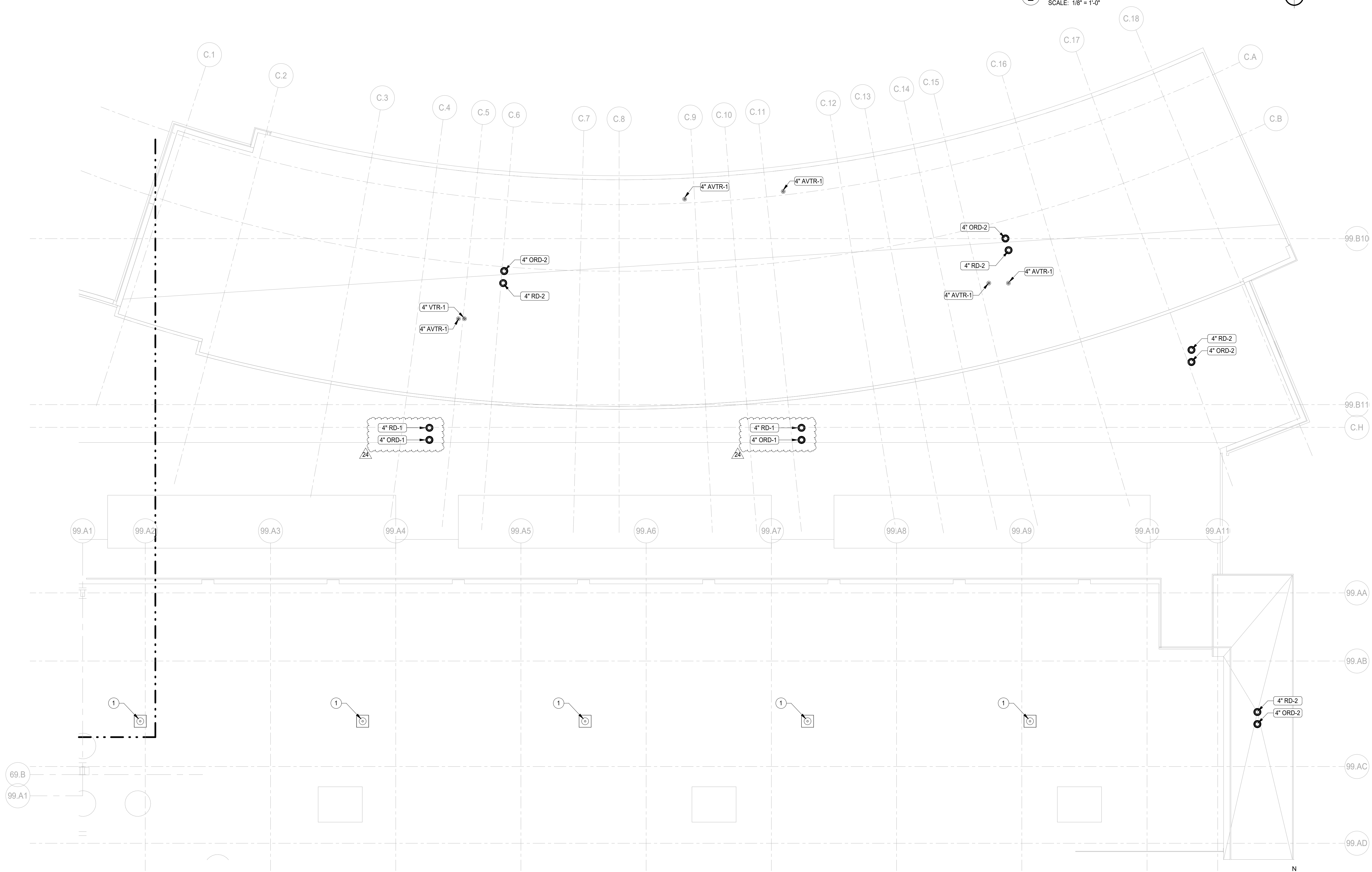
COMMUNITY HIGH SCHOOL
DISTRICT 99



Wight & Company
wightco.com
2500 North Frontage Road
Darien, IL 60561
P 630.969.7000
F 630.969.7979



2 SANITARY & DRAINAGE FLOOR PLAN - ROOF LEVEL AREA C.2
SCALE: 1/8" = 1'-0"



1 SANITARY & DRAINAGE FLOOR PLAN - ROOF LEVEL AREA C.1
SCALE: 1/8" = 1'-0"

6/27/2019 8:43:08 PM
 C:\Users\agular\Documents\10-6274-42_DSS_MFP-F2_2019_Central_regular.rvt
 Wight & Co. © Copyright 2018 All rights reserved. No part of these documents may be reproduced, stored, or transmitted in any form or by any means, electronic, mechanical, photocopying, recording or otherwise, without the prior written consent of Wight & Co.

**NOT FOR
CONSTRUCTION**

REV	ISSUE	DATE
24	ISSUED FOR ADDENDUM#2 - BG7	06.27.2019
	ISSUED FOR BID - BID GROUP 7	06.07.2019
	ISSUED FOR 75% CD - PHASE B	05.10.2019
	ISSUED FOR 50% CD - PHASE B	04.12.2019
	ISSUED FOR DESIGN DEVELOPMENT - PHASE B	03.11.2019

**MFP
IMPLEMENTATION -
SOUTH**

1436 NORFOLK STREET
DOWNERS GROVE, IL 60516

**SANITARY & DRAINAGE
FLOOR PLAN - ROOF
LEVEL AREA C**

Project Number:
5274-42
Drawn By:
E. AGUILAR
Sheet:

P1.13C.b