



DATE: October 2, 2019

FROM: Wight & Company
2500 N. Frontage Road
Darien, IL 60561

SUBJECT: ADDENDUM #1 TO THE BIDDING DOCUMENTS FOR:
BID GROUP #7
MASTER FACILITY PLAN IMPLEMENTATION
COMMUNITY HIGH SCHOOL DISTRICT 99
1436 NORFOLK STREET
DOWNERS GROVE, IL 60516

Wight & Company

wightco.com

.....
2500 North Frontage Road

Darien, IL 60561

.....
P 630.969.7000

F 630.969.7979

This addendum forms a part of the Bidding Contract Documents, dated June 7, 2019. Bidders must acknowledge receipt of this Addendum in the space provided on the Bid Form. Drawing revisions clouded and tagged with delta 33.

SOUTH

I. Clarifications

1. **QUESTION:** Sheet A5.11/7 Shows the window shade between the Curtain wall and the beam. Can you provide a detail of how you want the blocking to be done? **ANSWER: Detail 7 applies to the narrow window openings on Grid line C.18 between approximately C.D & C.E on Levels 1 and 2. The intent is for the window shade to span the 3'-0" opening between the jambs.**
2. **QUESTION:** Sheet A5.08/3 Gets window shades in this location according to the 2nd Floor RCP but they are not shown in this detail. How are these being installed? Are they being fastened to the triple 2 x 6 top plate or to the roof deck? **ANSWER: Window shades are intended to be attached to the wood blocking just above the head of the curtainwall.**
3. **QUESTION:** Door in the Ceramics Studio 1-404 to what appears to be a storage room is labeled as "CB" and does not show up on door schedule. **ANSWER: C.B is the column bubble. That door is part of the wire mesh partition enclosure. Hardware similar to 1409A & B.**
4. **QUESTION:** Door between 2D Studio 1-407 and Digital Studio 1-408 is labeled as "C-10", is this door 1408C on the door schedule? **ANSWER: Correct, this door is 1408C. C.10 is the column bubble.**
5. **QUESTION:** Door 1355 in Building Services room 1-355, and doors 2426 and 2427 in Vestibule 2-427 do not show up on door schedule but appear to be in Phase B footprint. Do these need to be included in this scope? **ANSWER: Door 1355 can be excluded from the scope for this Phase of construction. Doors 2427 and 2426 are to be hardware set 53 as defined in specification 087111 and should be included with this phase of construction.**
6. **QUESTION:** Door 1352 in CMU or Metal Stud wall? **ANSWER: Door 1352 can be excluded from the scope for this phase.**

7. **QUESTION:** Hardware set on door schedule for openings 1347A & 1347B are missing. Please advise. **ANSWER:** *Doors 1347A and 1347B are to be hardware set 52 as defined in specification 087111.*
8. **QUESTION:** Can you clarify what color the Armstrong baffles are to be factory painted. Specs in the project manual refer to drawings for indication of color. But drawings do not list a color. **ANSWER:** *Baffles are to be painted PT-1.*
9. **QUESTION:** Project manual lists three Acoustical ceiling types (ACT1, ACT2, and ACT3). Drawings show only two types used (ACT1 and ACT3) can you confirm that ACT2 is not being used. **ANSWER:** *Confirmed. ACT-2 is not needed for this phase.*
10. **QUESTION:** Project specification for Armstrong baffles describe the baffles to be “11-3/4” inches high by 12 feet overall width”, however the largest width available for the baffles are 4’. Can you clarify is the baffles are to be 4’ in width. **ANSWER:** *Confirmed 4’-0” width is acceptable.*
11. **CLARIFICATION:** Remove general note 7 from the reflected ceiling plans. Sprinkler heads are *not* to be painted.
12. **CLARIFICATION:** Refer to overall plans A2.00 – A2.04 for phasing delineation. Work within the phasing boundaries shown is to be included and any related incidental work outside of the extents. Culinary labs have been constructed as part of a previous phase.

II. Specifications

1. REPLACE attached specification 087111 – DOOR HARDWARE

III. Modified Drawings

ARCHITECTURAL

1. Sheet A12.01C SIGNAGE PLAN LEVEL 1 AREA C (**Full size sheet issued**)
 - a. Signage plan issued for location and quantity of signs.
2. Sheet A12.02C SIGNAGE PLAN LEVEL 2 AREA C (**Full size sheet issued**)
 - a. Signage plan issued for location and quantity of signs.
3. Sheet A12.04 SIGNAGE DETAILS (**Full size sheet issued**)
 - a. Signage designations and details.

IV. Scope of Work -Signage

END OF ADDENDUM

SECTION 087111 – DOOR HARDWARE

PART 1 - GENERAL

1.1 RELATED DOCUMENTS

- A. Drawings and general provisions of the Contract, including General and Supplementary Conditions and Division 01 Specification Sections, apply to this Section.

1.2 SUMMARY

A. Section Includes:

1. Commercial door hardware for the following:
 - a. Swinging doors.
 - b. Other doors to the extent indicated.
2. Cylinders for door hardware specified in other Sections.

B. Related Requirements:

1. Division 06 Section "Architectural Woodwork" for cabinet door hardware provided as part of architectural woodwork.
2. Division 08 Section "Hollow Metal Doors and Frames" for door silencers provided as part of the frame.
3. Division 08 Section "Aluminum-Framed Entrances and Storefronts" for installation of entrance door hardware, except cylinders.
4. Division 08 Section "Flush Wood Doors" for integral intumescent seals provided as part of labeled fire-rated assemblies.
5. Division 26 Sections for connections to electrical power system and for low-voltage wiring work.

- C. Products furnished, but not installed, under this Section include the following. Coordinating, purchasing, delivering, and scheduling remain requirements of this Section.

1. Hardware for aluminum entrance doors and frames specified in other Sections.

1.3 ACTION SUBMITTALS

- A. Product Data: Include installation details, material descriptions, dimensions of individual components and profiles, and finishes.

- B. Shop Drawings: Details of electrified door hardware, indicating the following:
1. Wiring Diagrams: For power, signal, and control wiring and including the following:
 - a. Details of interface of electrified door hardware and building safety and security systems.
 2. Operation Narrative: Describe the operation of doors controlled by electrified door hardware.
- C. Samples for Verification: For exposed door hardware of each type, in specified finish, full size. Tag with full description for coordination with the door hardware sets. Submit Samples before, or concurrent with, submission of the final door hardware sets.
1. Samples will be returned to Contractor. Units that are acceptable and remain undamaged through submittal, review, and field comparison process may, after final check of operation, be incorporated into the Work, within limitations of keying requirements.
- D. Other Action Submittals:
1. Door Hardware Schedule: Prepared by or under the supervision of Installer, detailing fabrication and assembly of door hardware, as well as installation procedures and diagrams. Coordinate the final door hardware schedule with doors, frames, and related work to ensure proper size, thickness, hand, function, and finish of door hardware.
 - a. Submittal Sequence: Submit door hardware schedule after or concurrent with submissions of Product Data, Samples, and Shop Drawings. Coordinate submission of door hardware schedule with scheduling requirements of other work to facilitate the fabrication of other work that is critical in Project construction schedule.
 - b. Format: Use same scheduling sequence and format and use same door numbers as in the Contract Documents. Double space entries, and number and date each page.
 - c. Content: Include the following information:
 - 1) Identification number, location, hand, fire rating, size, and material of each door and frame.
 - 2) Locations of each door hardware set, cross-referenced to Drawings on floor plans and to door and frame schedule.
 - 3) Complete designations, including name and manufacturer, type, style, function, size, quantity, function, and finish of each door hardware product.
 - 4) Description of electrified door hardware sequences of operation and interfaces with other building control systems.
 - 5) Fastenings and other pertinent information.
 - 6) Explanation of abbreviations, symbols, and codes contained in schedule.
 - 7) Mounting locations for door hardware.

- 8) List of related door devices specified in other Sections for each door and frame.
2. Keying Schedule: Prepared by or under the supervision of Installer, detailing Owner's final keying instructions for locks. Include schematic keying diagram and index each key set to unique door designations that are coordinated with the Contract Documents.

1.4 INFORMATIONAL SUBMITTALS

- A. Qualification Data: For Installer and Architectural Hardware Consultant.
- B. Product Certificates: For electrified door hardware, from the manufacturer.
 1. Certify that door hardware approved for use on types and sizes of labeled fire-rated doors complies with listed fire-rated door assemblies.
- C. Product Test Reports: For compliance with accessibility requirements, based on evaluation of comprehensive tests performed by manufacturer and witnessed by a qualified testing agency, for door hardware on doors located in accessible routes.
- D. Warranty: Special warranty specified in this Section.

1.5 CLOSEOUT SUBMITTALS

- A. Maintenance Data: For each type of door hardware to include in maintenance manuals. Include final hardware and keying schedule.

1.6 QUALITY ASSURANCE

- A. Installer Qualifications: An employer of workers trained and approved by product manufacturers with experience in installing specified items.
- B. Hardware Supplier Qualifications:
 1. Supplier must be a corporate member in good standing of The Door and Hardware Institute (DHI).
 2. Supplier shall employ an active Architectural Hardware Consultant (AHC), who is currently participating in DHI's continuing education program (CEP).
 3. Warehousing Facilities: In Project's vicinity.
 4. Scheduling Responsibility: Preparation of door hardware schedule.
 5. Engineering Responsibility: Preparation of data for electrified door hardware, including Shop Drawings, based on testing and engineering analysis of manufacturer's standard units in assemblies similar to those indicated for this Project.

- C. Source Limitations: Obtain each type of door hardware from a Source Limitations: Obtain each type of door hardware from a single manufacturer.
1. Provide electrified door hardware from same manufacturer as mechanical door hardware, unless otherwise indicated. Manufacturers that perform electrical modifications and that are listed by a testing and inspecting agency acceptable to authorities having jurisdiction are acceptable.
- D. Fire-Rated Door Assemblies: Where fire-rated door assemblies are indicated, provide door hardware rated for use in assemblies complying with NFPA 80 that are listed and labeled by a qualified testing agency, for fire-protection ratings indicated, based on testing at positive pressure according to NFPA 252 or UL 10C, unless otherwise indicated.
- E. Smoke- and Draft-Control Door Assemblies: Where smoke- and draft-control door assemblies are required, provide door hardware that meets requirements of assemblies tested according to UL 1784 and installed in compliance with NFPA 105.
1. Air Leakage Rate: Maximum air leakage of 0.3 cfm/sq. ft. at the tested pressure differential of 0.3-inch wg of water.
- F. Electrified Door Hardware: Listed and labeled as defined in NFPA 70, Article 100, by a testing agency acceptable to authorities having jurisdiction.
- G. Means of Egress Doors: Latches do not require more force than 8-1/2 lbf to release the latch for exterior doors and 5 lbf for interior doors. Locks do not require use of a key, tool, or special knowledge for operation.
- H. Accessibility Requirements: For door hardware on doors in an accessible route, comply with the U.S. Architectural & Transportation Barriers Compliance Board's ADA-ABA Accessibility Guidelines and the Illinois Accessibility Act.
1. Provide operating devices that do not require tight grasping, pinching, or twisting of the wrist and that operate with a force of not more than 5 lbf.
 2. Comply with the following maximum opening-force requirements:
 - a. Interior, Non-Fire-Rated Hinged Doors: 5 lbf applied perpendicular to door.
 - b. Fire Doors: Minimum opening force allowable by authorities having jurisdiction.
 3. Adjust door closer sweep periods so that, from an open position of 70 degrees, the door will take at least 3 seconds to move to a point 3 inches from the latch, measured to the leading edge of the door.

- I. Keying Conference: Conduct conference at Project site to comply with requirements in Division 01 Section "Project Management and Coordination." In addition to Owner, Construction Manager, Contractor, and Architect, conference participants shall also include Installer's Architectural Hardware Consultant. Incorporate keying conference decisions into final keying schedule after reviewing door hardware keying system including, but not limited to, the following:
 1. Function of building, flow of traffic, purpose of each area, degree of security required, and plans for future expansion.
 2. Preliminary key system schematic diagram.
 3. Requirements for key control system.
 4. Requirements for access control.
 5. Address for delivery of keys.

- J. Preinstallation Conference: Conduct conference at Project site.
 1. Review and finalize construction schedule and verify availability of materials, Installer's personnel, equipment, and facilities needed to make progress and avoid delays.
 2. Inspect and discuss preparatory work performed by other trades.
 3. Inspect and discuss electrical roughing-in for electrified door hardware.
 4. Review sequence of operation for each type of electrified door hardware.

1.7 DELIVERY, STORAGE, AND HANDLING

- A. Inventory door hardware on receipt and provide secure lock-up for door hardware delivered to Project site.
- B. Tag each item or package separately with identification coordinated with the final door hardware schedule, and include installation instructions, templates, and necessary fasteners with each item or package.
- C. Deliver keys and permanent cores to Owner by registered mail or overnight package service.

1.8 COORDINATION

- A. Installation Templates: Distribute for doors, frames, and other work specified to be factory prepared. Check Shop Drawings of other work to confirm that adequate provisions are made for locating and installing door hardware to comply with indicated requirements.
- B. Security: Coordinate installation of door hardware, keying, and access control with Owner's security consultant.
- C. Electrical System Roughing-In: Coordinate layout and installation of electrified door hardware with connections to power supplies and building safety and security systems.

1.9 WARRANTY

- A. Special Warranty: Manufacturer's standard form in which manufacturer agrees to repair or replace components of door hardware that fail in materials or workmanship within specified warranty period.
 - 1. Failures include, but are not limited to, the following:
 - a. Structural failures including excessive deflection, cracking, or breakage.
 - b. Faulty operation of operators and door hardware.
 - c. Deterioration of metals, metal finishes, and other materials beyond normal weathering.
- B. Warranty Period: One year from date of Substantial Completion, except as follows:
 - 1. Exit Devices: Two years from date of Substantial Completion.
 - 2. Locks: 3 years from date of Substantial Completion.
 - 3. Manual Closers: 10 years from date of Substantial Completion.

1.10 MAINTENANCE SERVICE

- A. Maintenance Tools and Instructions: Furnish a complete set of specialized tools and maintenance instructions as needed for Owner's continued adjustment, maintenance, and removal and replacement of door hardware.

PART 2 - PRODUCTS

2.1 SCHEDULED DOOR HARDWARE

- A. Provide door hardware for each door as scheduled in Part 3 "Door Hardware Schedule" Article to comply with requirements in this Section.
 - 1. Door Hardware Sets: Provide quantity, item, size, finish or color indicated.
 - 2. Sequence of Operation: Provide electrified door hardware function, sequence of operation, and interface with other building control systems indicated.
- B. Designations: Requirements for design, grade, function, finish, size, and other distinctive qualities of each type of door hardware are indicated in Part 3 "Door Hardware Schedule" Article. Products are identified by descriptive titles corresponding to requirements specified in Part 2.
- C. Hardware shall be BHMA Grade 1.

2.2 HINGES

- A. Hinges: BHMA A156.1, Grade 1. Provide template-produced hinges for hinges installed on hollow-metal doors and hollow-metal frames.
1. Approved Manufacturers: Subject to compliance with requirements, provide product indicated on schedule or equal product by one of the following:
 - a. Hager.
 - b. Ives.
 - c. Stanley.
 - d. No alternate manufacturers will be accepted without architect's approval prior to bidding.
- B. Quantity: Provide the following, unless otherwise indicated:
1. Two Hinges: For doors with heights up to 60 inches.
 2. Three Hinges: For doors with heights 61 to 90 inches.
 3. Four Hinges: For doors with heights 91 to 120 inches.
 4. For doors with heights more than 120 inches, provide 4 hinges, plus 1 hinge for every 30 inches of door height greater than 120 inches.
- C. Hinge Weight: Unless otherwise indicated, provide the following:
1. Entrance Doors and other high frequency doors: Heavy duty continuous hinges.
 2. Interior Doors: Standard weight ball bearing hinges.
 3. Interior Doors 3'4" wide or greater: Heavy weight ball bearing hinges.
- D. Hinge Base Metal:
1. Exterior Butt Hinges: Stainless steel, with stainless-steel pin.
 2. Continuous gear hinges: Anodized aluminum anodized
 3. Interior Hinges: Steel with steel pin.
- E. Hinge Options:
1. Nonremovable Pins: Provide set screw in hinge barrel that, when tightened into a groove in hinge pin, prevents removal of pin while door is closed; for outswinging exterior doors.
 2. Corners: Square.
 3. All hinges to be ball bearing hinges.
- F. Fasteners: Comply with the following:
1. Machine Screws: For metal doors and frames. Install into drilled and tapped holes.
 2. Wood Screws: For wood doors and frames.
 3. Threaded-to-the-Head Wood Screws: For fire-rated wood doors.
 4. Screws: Phillips flat-head; machine screws (drilled and tapped holes) for metal doors. Wood screws for wood doors and frames]. Finish screw heads to match surface of hinges.

2.3 CONTINUOUS HINGES

- A. Continuous Hinges: BHMA 156.26, minimum 0.120-inch-thick, hinge leaves with minimum overall width of 4 inches; fabricated to full height of door and frame and to template screw locations; with components finished after milling and drilling are complete.
- B. Continuous, Gear-Type Hinges: Extruded-aluminum, pinless, geared hinge leaves joined by a continuous extruded-aluminum channel cap; with concealed, self-lubricating thrust bearings.
 - 1. Basis-of-Design Product: Subject to compliance with requirements, provide product indicated on schedule or comparable product by one of the following:
 - a. Hager.
 - b. Ives.
 - c. Select.
 - d. No alternate manufacturers will be accepted without architect's approval prior to bidding.
 - 2. Grade: Grade 1-300.
 - 3. Hinges for Fire-Rated Assemblies: With steel fire pins to hold fire-rated doors in place if required by tested listing.
 - 4. Mounting: Concealed leaf.

2.4 MECHANICAL LOCKS AND LATCHES

- A. Lock Functions: As indicated in door hardware schedule. Provide mortise and cylindrical locksets as indicated in hardware sets.
- B. Lock Throw: Comply with testing requirements for length of bolts to comply with labeled fire door requirements, and as follows:
 - 1. Mortise Locks: Minimum 3/4-inch latchbolt throw.
 - 2. Deadbolts: Minimum 1-inch bolt throw.
- C. Lock Backset: 2-3/4 inches, unless otherwise indicated.
- D. Lock Trim:
 - 1. Description: As indicated in door hardware schedule.
 - 2. Dummy Trim: Match lever lock trim and escutcheons.
 - 3. Operating Device: Lever with escutcheons (roses).
- E. Strikes: Provide manufacturer's standard strike for each lock bolt or latchbolt complying with requirements indicated for applicable lock or latch and with strike box and curved lip extended to protect frame; finished to match lock or latch.
 - 1. Aluminum-Frame Strike Box: Manufacturer's special strike box fabricated for aluminum framing.

- F. Mortise Locks: BHMA A156.13; Grade 1.
 - 1. Approved Manufacturers: Subject to compliance with requirements, provide product indicated on schedule or equal product by one of the following:
 - a. Schlage.
 - b. No alternate manufacturers will be accepted without architect's approval prior to bidding.

2.5 DOOR BOLTS

- A. Automatic Flush Bolts: BHMA A156.3, Grade 1; designed for mortising into door edge.
- B. Dustproof Strikes: Grade 1, polished wrought brass, with 3/4-inch-diameter, spring-tension plunger.
- C. Approved Manufacturers: Subject to compliance with requirements, provide product indicated on schedule or equal product by one of the following:
 - 1. Flush Bolts:
 - a. Hager.
 - b. Ives.
 - c. Rockwood.
 - d. No alternate manufacturers will be accepted without architect's approval prior to bidding.
- D. Bolt Throw: Comply with testing requirements for length of bolts to comply with labeled fire door requirements, and as follows:
 - 1. Mortise Flush Bolts: Minimum 3/4-inch throw.

2.6 EXIT DEVICES AND AUXILIARY ITEMS

- A. Exit Devices and Auxiliary Items: BHMA A156.3, Grade 1.
 - 1. Approved Manufacturers: Subject to compliance with requirements, provide product indicated on schedule or equal product by one of the following:
 - a. Von Duprin
 - b. No alternate manufacturers will be accepted without architect's approval prior to bidding.
- B. Panic Exit Devices: Listed and labeled by a testing and inspecting agency acceptable to authorities having jurisdiction, for panic protection, based on testing according to UL 305.
- C. Fire Exit Devices: Devices complying with NFPA 80 that are listed and labeled by a testing and inspecting agency acceptable to authorities having jurisdiction, for fire and panic protection, based on testing according to UL 305 and NFPA 252.

- D. Fire-Exit Removable Mullions: Provide removable mullions for use with fire exit devices complying with NFPA 80 that are listed and labeled by a testing and inspecting agency acceptable to authorities having jurisdiction, for fire and panic protection, based on testing according to UL 305 and NFPA 252. Mullions shall be used only with exit devices for which they have been tested.
- E. Through-Bolt Fasteners: For exit devices and trim on metal doors and fire-rated wood doors.

2.7 LOCK CYLINDERS

- A. Lock Cylinders: Manufacturers interchangeable core, constructed from brass or bronze, stainless steel, or nickel silver.
 - 1. Approved Manufacturers: Subject to compliance with requirements, provide product indicated on schedule or equal product by one of the following:
 - a. Schlage.
 - b. No alternate manufacturers will be accepted without architect's approval prior to bidding.

2.8 KEYING

- A. Keying System: Factory registered, complying with guidelines in BHMA A156.28, Appendix A. Incorporate decisions made in keying conference.
 - 1. Key all new cylinders into the existing masterkey system.
- B. Keys: Nickel-silver.
 - 1. Stamping: Permanently inscribe each key with a visual key control number and include the following notation:
 - a. Notation: "DO NOT DUPLICATE."
 - 2. Quantity: In addition to one extra blank key for each lock, provide the following:
 - a. Cylinder Change Keys: Three.
 - b. Master Keys: Five.
 - c. Grand Master Keys: Five.
 - d. Control Keys: Two.

2.9 OPERATING TRIM

- A. Operating Trim: BHMA A156.6, Grade 1; stainless steel, unless otherwise indicated.
 - 1. Approved Manufacturers: Subject to compliance with requirements, provide product indicated on schedule or equal product by one of the following:
 - a. Hager.
 - b. Ives.
 - c. Rockwood.
 - d. No alternate manufacturers will be accepted without architect's approval prior to bidding.
- B. Flat Push Plates: 0.050 inch thick, 4 inches wide by 16 inches high with square corners and beveled edges; secured with exposed screws.
- C. Straight Door Pulls: With minimum clearance of 1-1/2 inches from face of door.
 - 1. Type: 1-inch constant diameter pull.
 - 2. Mounting: Through bolted with oval-head machine screws and countersunk washers.
 - 3. Center to Center Length: 10 inches.

2.10 SURFACE CLOSERS

- A. Surface Closers: BHMA A156.4, Grade 1; rack-and-pinion hydraulic type with adjustable sweep and latch speeds controlled by key-operated valves and forged-steel main arm. Comply with manufacturer's written recommendations for size of door closers depending on size of door, exposure to weather, and anticipated frequency of use. Provide factory-sized closers, adjustable to meet field conditions and requirements for opening force. Provide extra duty arm at parallel arm locations.
 - 1. Approved Manufacturers: Subject to compliance with requirements, provide product indicated on schedule or equal product by one of the following:
 - a. LCN
 - b. No alternate manufacturers will be accepted without architect's approval prior to bidding.
- B. Surface Closer with Cover: Grade 1; Modern Type with mechanism enclosed in cover. Mounting and type as indicated, with adjustable backcheck effective between 60 and 85 degrees of door opening, and molded plastic cover.
- C. Size of Units: Unless otherwise indicated, comply with manufacturer's written recommendations for size of door closers depending on size of door, exposure to weather, and anticipated frequency of use. Provide factory-sized closers, adjustable to meet field conditions and requirements for opening force.

2.11 AUTOMATIC DOOR OPERATORS

- A. General: Provide operators of size recommended by manufacturer for door size, weight, and movement; for condition of exposure; and for compliance with UL325. Coordinate operator mechanisms with door operation, hinges, and activation devices.

Fire Rated Doors: Provide door operators for fire-rated door assemblies that comply with NFPA80 for fire-rated door components and are listed and labeled by a qualified testing agency.

- B. Brackets and Reinforcements: Manufacturer's standard, fabricated from aluminum with nonferrous shims for aligning system components.
- C. Standard: Certified ANSI/BHMA A156.19.

Performance Requirements:

- a. Opening force if power fails: Not more than 15lbf to release a latch if provided, not more than 30lbf required to manually set door in motion, and not more than 15lbf required to fully open door.
 - b. Entrapment Protection: Not more than 15lbf required to prevent stopped door from closing or opening.
- D. Configuration: Surface mounted. Door operators to control single swinging and pair of swinging doors.
- E. Operation: Power opening and spring closing capable of meeting ANSI A117.1 accessibility guideline. Provide time delay for door to remain open before initiating closing cycle as required by ANSI/BHMA A156.19. When not in automatic mode, door operator to function as manual door closer with fully adjustable opening and closing forces, with or without electrical power.
- F. Features: Operator units to have full feature adjustments for door opening and closing force and speed, backcheck, motor assist acceleration from 0 to 30 seconds, time delay, vestibule interface delay, obstruction recycle, and hold open time from 0 up to 30 seconds.
- G. Provide outputs and relays on board the operator to allow for coordination of exit device latch retraction, electric strikes, magnetic locks, card readers, safety and motion sensors and specified auxiliary contacts.
- H. Activation Devices: Provide activation devices in accordance with ANSI/BHMA A156.19 standard, for condition of exposure indicated and for long term, maintenance free operation under normal traffic load operation. Coordinate activation control with electrified hardware and access control interfaces. Activation switches are standard SPST, with option DPDT availability.

1. Manufacturers:

- a. LCN

- b. Horton
- c. Motion Access
- d.. No alternate manufacturers will be accepted without architect's approval prior to bidding.

2.12 MECHANICAL STOPS AND HOLDERS

- A. Wall- and Floor-Mounted Stops: BHMA A156.16, Grade 1; polished cast brass, bronze, or aluminum base metal; with rubber bumper.
 - 1. Approved Manufacturers: Subject to compliance with requirements, provide product indicated on schedule or equal product by one of the following:
 - a. Hager.
 - b. Ives.
 - c. Rockwood.
 - d. No alternate manufacturers will be accepted without architect's approval prior to bidding.

2.13 OVERHEAD STOPS AND HOLDERS

- A. Overhead Stops and Holders: BHMA A156.8, Grade 1.
 - 1. Approved Manufacturers: Subject to compliance with requirements, provide product indicated on schedule or equal product by one of the following:
 - a. ABH.
 - b. Glynn-Johnson.
 - c. Rixson.
 - d. No alternate manufacturers will be accepted without architect's approval prior to bidding.

2.14 METAL PROTECTIVE TRIM UNITS

- A. Metal Protective Trim Units: BHMA A156.6, Grade 1; fabricated from 0.050-inch-thick sheet; with manufacturer's standard machine or self-tapping screw fasteners.
 - 1. Approved Manufacturers: Subject to compliance with requirements, provide product indicated on schedule or equal product by one of the following:
 - a. Hager.
 - b. Ives.
 - c. Rockwood.
 - d. No alternate manufacturers will be accepted without architect's approval prior to bidding.

2.15 ELECTRIC STRIKES

- A. Electric Strikes: Heavy duty, confirming to ANSI/BHMA A156.31, UL listed for both Burglary Resistance and for use on fire rated door assemblies. Stainless Steel construction tested to 2000lbs of static strength and 120ft-lbs dynamic strength. Strikes tested for a minimum 1 million operating cycles. Provide strikes with 12 or 24VDC capability and supplied as fail secure unless otherwise specified.
 - 1. Acceptable Manufacturers:
 - a. HES.
 - b. Von Duprin.
 - c. No alternate manufacturers will be accepted without architect's approval prior to bidding.

2.16 DOOR GASKETING

- A. Standard: BHMA A156.22.
- B. General: Provide continuous weather-strip gasketing on exterior doors and provide smoke, light, or sound gasketing on interior doors where indicated or scheduled. Provide noncorrosive fasteners for exterior applications and elsewhere as indicated.
 - 1. Perimeter Gasketing: Apply to head and jamb, forming seal between door and frame.
 - 2. Meeting Stile Gasketing: Fasten to meeting stiles, forming seal when doors are closed.
 - 3. Door Bottoms: Apply to bottom of door, forming seal with threshold when door is closed.
- C. Air Leakage: Not to exceed 0.50 cfm per foot of crack length for gasketing other than for smoke control, as tested according to ASTM E 283.
- D. Sound-Rated Gasketing: Assemblies that are listed and labeled by a testing and inspecting agency, for sound ratings indicated, based on testing according to ASTM E 1408.
- E. Replaceable Seal Strips: Provide only those units where resilient or flexible seal strips are easily replaceable and readily available from stocks maintained by manufacturer.
- F. Gasketing Materials: ASTM D 2000 and AAMA 701/702.
- G. Manufacturers:
 - 1. National Guard Products (NGP).
 - 2. Pemko.
 - 3. Reese.
 - 4. Smoke Seals. Provide smoke seal gasketing at all fire doors regardless if shown in sets.

2.17 THRESHOLDS

- A. Standard: BHMA A156.21.
- B. Accessibility Requirements: Where thresholds are indicated to comply with accessibility requirements, comply with the U.S. Architectural & Transportation Barriers Compliance Board's "Americans with Disabilities Act (ADA), Accessibility Guidelines for Buildings and Facilities (ADAAG)."
 - 1. Bevel raised thresholds with a slope of not more than 1:2. Provide thresholds not more than 1/2 inch high.
- C. Thresholds for Means of Egress Doors: Comply with NFPA 101. Maximum 1/2 inch high.
- D. Manufacturers:
 - 1. National Guard Products (NGP).
 - 2. Pemko.
 - 3. Reese.

2.18 FABRICATION

- A. Base Metals: Produce door hardware units of base metal, fabricated by forming method indicated, using manufacturer's standard metal alloy, composition, temper, and hardness. Furnish metals of a quality equal to or greater than that of specified door hardware units and BHMA A156.18 for finishes. Do not furnish manufacturer's standard materials or forming methods if different from specified standard.
- B. Fasteners: Provide door hardware manufactured to comply with published templates generally prepared for machine, wood, and sheet metal screws. Provide screws according to commercially recognized industry standards for application intended. Provide Phillips flat-head screws with finished heads to match surface of door hardware, unless otherwise indicated.
 - 1. Concealed Fasteners: For door hardware units that are exposed when door is closed, except for units already specified with concealed fasteners. Do not use through bolts for installation where bolt head or nut on opposite face is exposed unless it is the only means of securely attaching the door hardware. Where through bolts are used on hollow door and frame construction, provide sleeves for each through bolt.
 - 2. Fire-Rated Applications:
 - a. Wood or Machine Screws: For the following:
 - 1) Hinges mortised to doors or frames; use threaded-to-the-head wood screws for wood doors and frames.
 - 2) Strike plates to frames.
 - 3) Closers to doors and frames.

- b. Steel Through Bolts: For the following unless door blocking is provided:
 - 1) Surface hinges to doors.
 - 2) Closers to doors and frames.
 - 3) Surface-mounted exit devices.
- 3. Spacers or Sex Bolts: For through bolting of hollow-metal doors.
- 4. Fasteners for Wood Doors: Comply with requirements in DHI WDHS.2, "Recommended Fasteners for Wood Doors."
- 5. Gasketing Fasteners: Provide noncorrosive fasteners for exterior applications and elsewhere as indicated.

2.19 FINISHES

- A. Provide finishes complying with BHMA A156.18 as indicated in door hardware schedule.
- B. Protect mechanical finishes on exposed surfaces from damage by applying a strippable, temporary protective covering before shipping.
- C. Appearance of Finished Work: Variations in appearance of abutting or adjacent pieces are acceptable if they are within one-half of the range of approved Samples. Noticeable variations in the same piece are not acceptable. Variations in appearance of other components are acceptable if they are within the range of approved Samples and are assembled or installed to minimize contrast.

PART 3 - EXECUTION

3.1 EXAMINATION

- A. Examine doors and frames, with Installer present, for compliance with requirements for installation tolerances, labeled fire door assembly construction, wall and floor construction, and other conditions affecting performance.
- B. Examine roughing-in for electrical power systems to verify actual locations of wiring connections before electrified door hardware installation.
- C. Proceed with installation only after unsatisfactory conditions have been corrected.

3.2 PREPARATION

- A. Steel Doors and Frames: For surface applied door hardware, drill and tap doors and frames according to ANSI/SDI A250.6.
- B. Wood Doors: Comply with DHI WDHS.5 "Recommended Hardware Reinforcement Locations for Mineral Core Wood Flush Doors."

3.3 INSTALLATION

- A. Mounting Heights: Mount door hardware units at heights indicated in following applicable publications, unless specifically indicated or required to comply with governing regulations:
 - 1. Standard Steel Doors and Frames: DHI's "Recommended Locations for Architectural Hardware for Standard Steel Doors and Frames."
 - 2. Wood Doors: DHI WDHS.3, "Recommended Locations for Architectural Hardware for Wood Flush Doors."
- B. Install each door hardware item to comply with manufacturer's written instructions. Where cutting and fitting are required to install door hardware onto or into surfaces that are later to be painted or finished in another way, coordinate removal, storage, and reinstallation of surface protective trim units with finishing work specified in Division 9 Sections. Do not install surface-mounted items until finishes have been completed on substrates involved.
 - 1. Set units level, plumb, and true to line and location. Adjust and reinforce attachment substrates as necessary for proper installation and operation.
 - 2. Drill and countersink units that are not factory prepared for anchorage fasteners. Space fasteners and anchors according to industry standards.
- C. Hinges: Install types and in quantities indicated in door hardware schedule but not fewer than the number recommended by manufacturer for application indicated or one hinge for every 30 inches of door height, whichever is more stringent, unless other equivalent means of support for door, such as spring hinges or pivots, are provided.
- D. Stops: Provide wall stops for doors unless floor or other type stops are indicated in door hardware schedule. Do not mount floor stops where they will impede traffic.

3.4 ADJUSTING

- A. Initial Adjustment: Adjust and check each operating item of door hardware and each door to ensure proper operation or function of every unit. Replace units that cannot be adjusted to operate as intended. Adjust door control devices to compensate for final operation of heating and ventilating equipment and to comply with referenced accessibility requirements.
 - 1. Door Closers: Adjust sweep period to comply with accessibility requirements and requirements of authorities having jurisdiction.

3.5 CLEANING AND PROTECTION

- A. Clean adjacent surfaces soiled by door hardware installation.
- B. Clean operating items as necessary to restore proper function and finish.

- C. Provide final protection and maintain conditions that ensure door hardware is without damage or deterioration at time of Substantial Completion.

3.6 MISCELLANEOUS

- A. Fire-Rated Door Assemblies: Where fire-rated door assemblies are indicated, provide door hardware rated for use in assemblies complying with NFPA 80 that are listed and labeled by a qualified testing agency, for fire-protection ratings indicated, based on testing at positive pressure according to NFPA 252 or UL10C, unless otherwise indicated. Provide positive latching and self closing, regardless if specified in sets.
- B. Items of hardware not definitely specified herein but necessary for completion of the Work shall be provided. Such items shall be of type and quality suitable to the service required and comparable to the adjacent hardware. Where size and shape of members is such as to prevent the use of types specified, hardware shall be furnished of suitable types having as nearly as practicable the same operation and quality as the type specified. Sizes shall be adequate for the service required. Include such nuances as strike type, strike lip, raised barrel hinges, mounting brackets, fasteners, shims, and coordination between conflicting products. All doors shall be provided with a stop.

3.7 DOOR HARDWARE SCHEDULE

SET 01

2 EA	CONTINUOUS HINGE	780-112HD	CLR	HAGER
2 EA	EXIT DEVICE	3347EO	626	VON DUPRIN
2 EA	PULLS	BF158	630	ROCKWOOD
2 EA	CLOSER	4040XP	689	LCN
2 EA	OVERHEAD STOP	GJ100 SERIES	630	GLYNN-JOHNSON
2 EA	SWEEP	200N	AL	NGP
1 EA	THRESHOLD	8425	AL	NGP

**PROVIDE DROP PLATE AND BLADE STOP SPACERS AS REQUIRED FOR CLOSER INSTALLATION.

**SEALS BY DOOR SUPPLIER.

SET 02

1 EA	CONTINUOUS HINGE	780-112HD X EPT PREP	CLR	HAGER
1 EA	CONTINUOUS HINGE	780-112HD	CLR	HAGER
1 EA	POWER TRANSFER	EPT-10	SP28	VON DUPRIN
1 EA	EXIT DEVICE	QEL3347A-NL-OP	626	VON DUPRIN
1 EA	EXIT DEVICE	3347EO	626	VON DUPRIN
1 EA	I/C CYLINDER	AS REQUIRED	626	SCHLAGE
2 EA	PULLS	BF158	630	ROCKWOOD
1 EA	CLOSER	4040XP	689	LCN
1 EA	AUTO OPERATOR	4640	689	LCN
2 EA	ACTUATOR	8310-856T	630	LCN
2 EA	FLUSH MOUNT BOX	8310-868F	---	LCN

1 EA	WEATHER RING	8310-800	---	LCN
2 EA	OVERHEAD STOP	GJ100 SERIES	630	GLYNN-JOHNSON
1 EA	POWER SUPPLY	PS902 X 900-2RS	GRY	VON DUPRIN
2 EA	SWEEP	200N	AL	NGP
1 EA	THRESHOLD	8425	AL	NGP
1 EA	POSITION SWITCH	1078	GRY	GE

**CARD READER BY OTHERS.

**PROVIDE DROP PLATE AND BLADE STOP SPACERS AS REQUIRED FOR CLOSER INSTALLATION.

**SEALS BY DOOR SUPPLIER.

OPERATION: DOORS NORMALLY LOCKED AND CLOSED. VALID CARD READ ACTIVATES OUTSIDE AUTOMATIC OPERATOR ACTUATOR AND ACTIVATES ELECTRIC LATCH RETRACTION EXIT DEVICE TO ALLOW ENTRY. AT DISCRETION OF FACILITY, ELECTRIC LATCH RETRACTION EXIT DEVICE CAN BE PROGRAMMED TO BE RETRACTED TO ALLOW ENTRY (WHEN RETRACTED, OUTSIDE AUTOMATIC OPERATOR ACUATOR TO BE ACTIVE). FREE EGRESS IS ALWAYS ALLOWED.

SET 03

2 EA	CONTINUOUS HINGE	780-112HD	CLR	HAGER
2 EA	EXIT DEVICE	3347EO	626	VON DUPRIN
2 EA	PULLS	BF158	630	ROCKWOOD
2 EA	CLOSER	4040XP	689	LCN
2 EA	OVERHEAD STOP	GJ100 SERIES	630	GLYNN-JOHNSON

**PROVIDE DROP PLATE AND BLADE STOP SPACERS AS REQUIRED FOR CLOSER INSTALLATION.

SET 04

1 EA	CONTINUOUS HINGE	780-112HD X EPT PREP	CLR	HAGER
1 EA	CONTINUOUS HINGE	780-112HD	CLR	HAGER
1 EA	POWER TRANSFER	EPT-10	SP28	VON DUPRIN
1 EA	EXIT DEVICE	QEL3347A-NL-OP	626	VON DUPRIN
1 EA	EXIT DEVICE	3347EO	626	VON DUPRIN
1 EA	I/C CYLINDER	AS REQUIRED	626	SCHLAGE
2 EA	PULLS	BF158	630	ROCKWOOD
1 EA	CLOSER	4040XP	689	LCN
1 EA	AUTO OPERATOR	4640	689	LCN
2 EA	ACTUATOR	8310-856T	630	LCN
2 EA	FLUSH MOUNT BOX	8310-868F	---	LCN
2 EA	OVERHEAD STOP	GJ100 SERIES	630	GLYNN-JOHNSON
1 EA	POWER SUPPLY	PS902 X 900-2RS	GRY	VON DUPRIN
1 EA	POSITION SWITCH	1078	GRY	GE

**CARD READER AND REMOTE RELEASE BY OTHERS.

OPERATION: DOORS NORMALLY LOCKED AND CLOSED. VALID CARD READ OR REMOTE RELEASE ACTIVATES OUTSIDE AUTOMATIC OPERATOR ACTUATOR AND

ACTIVATES ELECTRIC LATCH RETRACTION EXIT DEVICE TO ALLOW ENTRY. AT DISCRETION OF FACILITY, ELECTRIC LATCH RETRACTION EXIT DEVICE CAN BE PROGRAMMED TO BE RETRACTED TO ALLOW ENTRY (WHEN RETRACTED, OUTSIDE AUTOMATIC OPERATOR ACUATOR TO BE ACTIVE). FREE EGRESS IS ALWAYS ALLOWED.

SET 05

1 EA	CONTINUOUS HINGE	780-112HD X EPT PREP	CLR	HAGER
1 EA	CONTINUOUS HINGE	780-112HD	CLR	HAGER
1 EA	POWER TRANSFER	EPT-10	SP28	VON DUPRIN
1 EA	EXIT DEVICE	QEL3347A-NL-OP	626	VON DUPRIN
1 EA	EXIT DEVICE	3347EO	626	VON DUPRIN
1 EA	I/C CYLINDER	AS REQUIRED	626	SCHLAGE
2 EA	PULLS	BF158	630	ROCKWOOD
1 EA	CLOSER	4040XP	689	LCN
1 EA	AUTO OPERATOR	4640	689	LCN
1 EA	ACTUATOR	8310-856T	630	LCN
1 EA	FLUSH MOUNT BOX	8310-868F	---	LCN
1 EA	WEATHER RING	8310-800	---	LCN
2 EA	OVERHEAD STOP	GJ100 SERIES	630	GLYNN-JOHNSON
1 EA	POWER SUPPLY	PS902 X 900-2RS	GRY	VON DUPRIN
2 EA	SWEEP	200N	AL	NGP
1 EA	THRESHOLD	8425	AL	NGP
1 EA	POSITION SWITCH	1078	GRY	GE

**CARD READER BY OTHERS.

**PROVIDE DROP PLATE AND BLADE STOP SPACERS AS REQUIRED FOR CLOSER INSTALLATION.

**SEALS BY DOOR SUPPLIER.

OPERATION: DOORS NORMALLY LOCKED AND CLOSED. VALID CARD READ ACTIVATES OUTSIDE AUTOMATIC OPERATOR ACTUATOR AND ACTIVATES ELECTRIC LATCH RETRACTION EXIT DEVICE TO ALLOW ENTRY. AT DISCRETION OF FACILITY, ELECTRIC LATCH RETRACTION EXIT DEVICE CAN BE PROGRAMMED TO BE RETRACTED TO ALLOW ENTRY (WHEN RETRACTED, OUTSIDE AUTOMATIC OPERATOR ACUATOR TO BE ACTIVE). FREE EGRESS IS ALWAYS ALLOWED.

SET 06

2 EA	CONTINUOUS HINGE	780-112HD	CLR	HAGER
2 EA	PUSH/PULL	BF15847	630	HAGER
2 EA	CLOSER	4040XP	689	LCN
2 EA	OVERHEAD STOP	GJ100 SERIES	630	GLYNN-JOHNSON

**PROVIDE DROP PLATE AND BLADE STOP SPACERS AS REQUIRED FOR CLOSER INSTALLATION.

SET 07

1 EA	CONTINUOUS HINGE	780-112HD	CLR	HAGER
------	------------------	-----------	-----	-------

1 EA	EXIT DEVICE	33A-EO	626	VON DUPRIN
1 EA	CLOSER	4040XP	689	LCN
1 EA	OVERHEAD STOP	GJ100 SERIES	630	GLYNN-JOHNSON
1 EA	SWEEP	200N	AL	NGP
1 EA	THRESHOLD	8425	AL	NGP

**PROVIDE DROP PLATE AND BLADE STOP SPACERS AS REQUIRED FOR CLOSER INSTALLATION.

**SEALS BY DOOR SUPPLIER.

SET 08

EA	HINGES	AS SPECIFIED	652	HAGER
1 EA	CLASSROOM SEC	L9071R X 05A	626	SCHLAGE
1 EA	OVERHEAD STOP	GJ100 SERIES	630	GLYNN-JOHNSON

SET 09

EA	HINGES	AS SPECIFIED	652	HAGER
1 EA	OFFICE LOCK	L9050R X 05A	626	SCHLAGE
1 EA	WALL STOP	409	630	ROCKWOOD

SET 10

EA	HINGES	AS SPECIFIED	652	HAGER
1 EA	STOREROOM LOCK	L9080R X 805A	626	SCHLAGE
1 EA	CLOSER	4040XP	689	LCN
1 EA	WALL STOP	409	630	ROCKWOOD
1 EA	KICKPLATE	10" X 2" LDW	630	ROCKWOOD

SET 11

EA	HINGES	AS SPECIFIED	652	HAGER
1 EA	STOREROOM LOCK	L9080R X 05A	626	SCHLAGE
1 EA	CLOSER	4040XP X CUSH	689	LCN
1 EA	KICKPLATE	10" X 2" LDW	630	ROCKWOOD

SET 12

EA	HINGES	AS SPECIFIED	652	HAGER
1 EA	ELECTRIC HINGE	AS SPECIFIED X ETW-6	652	HAGER
1 EA	ELECTRIC LOCK	RX-L9092REU X 05A	626	SCHLAGE
1 EA	CLOSER	4040XP	689	LCN
1 EA	OVERHEAD STOP	GJ100 SERIES	630	GLYNN-JOHNSON
1 EA	KICKPLATE	10" X 2" LDW	630	ROCKWOOD
1 EA	POSITION SWITCH	1078	GRY	GE

**CARD READER BY OTHERS.

SET 13

EA	HINGES	AS SPECIFIED	652	HAGER
1 EA	STOREROOM LOCK	L9080R X 05A	626	SCHLAGE
1 EA	CLOSER	4040XP	689	LCN
1 EA	WALL STOP	409	630	ROCKWOOD
1 EA	KICKPLATE	10" X 2" LDW	630	ROCKWOOD

SET 14

EA	HINGES	AS SPECIFIED	652	HAGER
1 EA	CORRIDOR LOCK	L9456R X 05A X L283-722	626	SCHLAGE
1 EA	WALL STOP	409	630	ROCKWOOD

SET 15

EA	HINGES	AS SPECIFIED	652	HAGER
1 EA	PRIVACY	L9040 X 05A X L283-722	626	SCHLAGE
1 EA	CLOSER	4040XP	689	LCN
1 EA	WALL STOP	409	630	ROCKWOOD
1 EA	KICKPLATE	10" X 2" LDW	630	ROCKWOOD

SET 16

1 EA	CONTINUOUS HINGE	780-224HD	CLR	HAGER
1 EA	CLASSROOM SEC	L9071R X 05A	626	SCHLAGE
1 EA	CLOSER	4040XP	689	LCN
1 EA	WALL STOP	409	630	ROCKWOOD
1 EA	KICKPLATE	10" X 2" LDW	630	ROCKWOOD

SET 17

EA	HINGES	AS SPECIFIED	652	HAGER
1 EA	CLASSROOM LOCK	L9070 X 05A	626	SCHLAGE
1 EA	CLOSER	4040XP	689	LCN
1 EA	WALL STOP	409	630	ROCKWOOD
1 EA	KICKPLATE	10" X 2" LDW	630	ROCKWOOD

SET 18

2 EA	CONTINUOUS HINGE	780-224HD	CLR	HAGER
2 EA	EXIT DEVICE	9927L-BE-F X LBR	626	VON DUPRIN
2 EA	CLOSER	4040XP	689	LCN
1 EA	WALL STOP	409	630	ROCKWOOD
1 EA	OVERHEAD STOP	GJ100 SERIES	630	GLYNN-JOHNSON
2 EA	KICKPLATE	10" X 2" LDW	630	ROCKWOOD
1 EA	ASTRAGAL	5070CL	AL	NGP
1 SET	SEALS	5050C	BLK	NGP

SET 19

EA	HINGES	AS SPECIFIED	652	HAGER
1 EA	PASSAGE	L9010 X 05A	626	SCHLAGE

1 EA	WALL STOP	409	630	ROCKWOOD
------	-----------	-----	-----	----------

SET 20

1 EA	CONTINUOUS HINGE	780-224HD	CLR	HAGER
1 EA	CLASSROOM SEC	L9071R X 05A	626	SCHLAGE
1 EA	CLOSER	4040XP	689	LCN
1 EA	OVERHEAD STOP	GJ100 SERIES	630	GLYNN-JOHNSON
1 EA	KICKPLATE	10" X 2" LDW	630	ROCKWOOD

SET 21

EA	HINGES	AS SPECIFIED	652	HAGER
1 EA	ELECTRIC HINGE	AS SPECIFIED X ETW-6	652	HAGER
1 EA	ELECTRIC LOCK	RX-L9092REU X 05A	626	SCHLAGE
1 EA	CLOSER	4040XP	689	LCN
1 EA	WALL STOP	409	630	ROCKWOOD
1 EA	KICKPLATE	10" X 2" LDW	630	ROCKWOOD
1 EA	POSITION SWITCH	1078	GRY	GE

**CARD READER BY OTHERS.

OPERATION: DOOR NORMALLY LOCKED AND CLOSED. VALID CARD READ UNLOCKS ELECTRIC LOCK TO ALLOW ENTRY. FREE EGRESS IS ALWAYS ALLOWED.

SET 22

EA	HINGES	AS SPECIFIED	652	HAGER
1 EA	CLASSROOM LOCK	L9070R X 05A	626	SCHLAGE
1 EA	WALL STOP	409	630	ROCKWOOD

SET 23

EA	HINGES	AS SPECIFIED	652	HAGER
1 EA	OFFICE LOCK	L9050R X 05A	626	SCHLAGE
1 EA	OVERHEAD STOP	GJ100 SERIES	630	GLYNN-JOHNSON

SET 24

EA	HINGES	AS SPECIFIED	652	HAGER
1 EA	STOREROOM LOCK	L9080R X 05A	626	SCHLAGE
1 EA	CLOSER	4040XP	689	LCN
1 EA	WALL STOP	409	630	ROCKWOOD
1 EA	KICKPLATE	10" X 2" LDW	630	ROCKWOOD
1 SET	SEALS	5050C	BLK	NGP

SET 25

EA	HINGES	AS SPECIFIED	652	HAGER
1 EA	CLASSROOM LOCK	L9070R X 05A	626	SCHLAGE
1 EA	CLOSER W/HOLD	4040XP-H	689	LCN

1 EA	WALL STOP	409	630	ROCKWOOD
1 EA	KICKPLATE	10" X 2" LDW	630	ROCKWOOD

SET 26

EA	HINGES	AS SPECIFIED	652	HAGER
1 EA	STORE LOCK	L9466R X 05A	626	SCHLAGE
1 EA	WALL STOP	409	630	ROCKWOOD

SET 27

EA	HINGES	AS SPECIFIED	652	HAGER
1 EA	EXIT DEVICE	99L-NL	626	VON DUPRIN
1 EA	I/C CYLINDER	AS REQUIRED	626	SCHLAGE
1 EA	CLOSER	4040XP X CUSH	689	LCN
1 EA	KICKPLATE	10" X 2" LDW	630	ROCKWOOD

**PROVIDE KNURLED LEVER.

SET 28

2 EA	CONTINUOUS HINGE	780-112HD	CLR	HAGER
2 EA	PUSH/PULL	BF15847	630	HAGER
2 EA	CLOSER	4040XP	689	LCN
1 EA	AUTO OPERATOR	4640	689	LCN
1 EA	ACTUATOR	8310-856T	630	LCN
1 EA	FLUSH MOUNT BOX	8310-868F	---	LCN
1 EA	DUAL ACTUATOR	8310-855	---	LCN
1 EA	FLUSH MOUNT BOX	8310-867F	---	LCN
2 EA	OVERHEAD STOP	GJ100 SERIES	630	GLYNN-JOHNSON

**PROVIDE DROP PLATE AND BLADE STOP SPACERS AS REQUIRED FOR CLOSER INSTALLATION.

SET 29

EA	HINGES	AS SPECIFIED	652	HAGER
1 EA	STORE LOCK	L9466R X 05A	626	SCHLAGE
1 EA	OVERHEAD STOP	GJ100 SERIES	630	GLYNN-JOHNSON

SET 30

EA	HINGES	AS SPECIFIED	652	HAGER
1 EA	STOREROOM LOCK	L9080R X 05A	626	SCHLAGE
1 EA	OVERHEAD STOP	GJ100 SERIES	630	GLYNN-JOHNSON

SET 31

2 EA	CONTINUOUS HINGE	780-224HD	CLR	HAGER
2 EA	EXIT DEVICE	9927L-BE-F X LBR	626	VON DUPRIN
2 EA	CLOSER	4040XP	689	LCN

2 EA	MAG HOLD OPEN	SEM7850	689	LCN
2 EA	KICKPLATE	10" X 1" LDW	630	ROCKWOOD
1 EA	ASTRAGAL	5070CL	AL	NGP
1 SET	SEALS	5050C	BLK	NGP

SET 32

EA	HINGES	AS SPECIFIED	652	HAGER
1 EA	STOREROOM LOCK	L9080R X 805A	626	SCHLAGE
1 EA	CLOSER	4040XP X CUSH	689	LCN
1 EA	KICKPLATE	10" X 2" LDW	630	ROCKWOOD

SET 33

2 EA	CONTINUOUS HINGE	780-224HD	CLR	HAGER
2 EA	EXIT DEVICE	99L-F	626	VON DUPRIN
3 EA	I/C CYLINDER	AS REQUIRED	626	SCHLAGE
2 EA	CLOSER	4040XP	689	LCN
2 EA	OVERHEAD STOP	GJ100 SERIES	630	GLYNN-JOHNSON
1 EA	KEYED MULLION	KR9954	SP28	VON DUPRIN
2 EA	KICKPLATE	10" X 2" LDW	630	ROCKWOOD
1 SET	ASTRAGAL	115N	AL	NGP
1 SET	SEALS	5050C	BLK	NGP

SET 34

2 EA	CONTINUOUS HINGE	780-224HD	CLR	HAGER
1 EA	EXIT DEVICE	9975L-BE-F	626	VON DUPRIN
1 EA	EXIT DEVICE	9947L-BE-F	626	VON DUPRIN
2 EA	CLOSER	4040XP	689	LCN
2 EA	MAG HOLD OPEN	SEM7850	689	LCN
1 EA	CARRY BAR	CB1	626	IVES
1 EA	COORDINATOR	COR X FL	628	IVES
2 EA	MNTG BRACKET	AS REQUIRED	628	IVES
2 EA	KICKPLATE	10" X 1" LDW	630	ROCKWOOD
1 EA	ASTRAGAL	BY DOOR SUPPLIER		
1 SET	SEALS	5050C	BLK	NGP

SET 35

2 EA	CONTINUOUS HINGE	780-112HD	CLR	HAGER
2 EA	EXIT DEVICE	3347EO	626	VON DUPRIN
2 EA	PULLS	BF158	630	ROCKWOOD
2 EA	CLOSER	4040XP	689	LCN
2 EA	OVERHEAD STOP	GJ100 SERIES	630	GLYNN-JOHNSON
2 EA	SWEEP	200N	AL	NGP
1 EA	THRESHOLD	8425	AL	NGP
2 EA	POSITION SWITCH	1078	GRY	GE

**PROVIDE DROP PLATE AND BLADE STOP SPACERS AS REQUIRED FOR CLOSER INSTALLATION.

**SEALS BY DOOR SUPPLIER.

SET 36

1 EA	CONTINUOUS HINGE	780-112HD	CLR	HAGER
1 EA	EXIT DEVICE	33A-EO	626	VON DUPRIN
1 EA	CLOSER	4040XP	689	LCN
1 EA	OVERHEAD STOP	GJ100 SERIES	630	GLYNN-JOHNSON
1 EA	SWEEP	200N	AL	NGP
1 EA	THRESHOLD	8425	AL	NGP
1 EA	POSITION SWITCH	1078	GRY	GE

**PROVIDE DROP PLATE AND BLADE STOP SPACERS AS REQUIRED FOR CLOSER INSTALLATION.

**SEALS BY DOOR SUPPLIER.

SET 37

1 EA	CONTINUOUS HINGE	780-224HD	CLR	HAGER
1 EA	EXIT DEVICE	99NL-OP	626	VON DUPRIN
1 EA	I/C CYLINDER	AS REQUIRED	626	SCHLAGE
1 EA	PULL	BF158	630	ROCKWOOD
1 EA	CLOSER	4040XP	689	LCN
1 EA	OVERHEAD STOP	GJ100 SERIES	630	GLYNN-JOHNSON
1 SET	WEATHERSTRIP	160S	AL	NGP
1 EA	SWEEP	200N	AL	NGP
1 EA	THRESHOLD	8425	AL	NGP
1 EA	POSITION SWITCH	1078	GRY	GE

SET 38

EA	HINGES	AS SPECIFIED	652	HAGER
1 EA	CLASSROOM LOCK	L9070R X 05A	626	SCHLAGE
1 EA	OVERHEAD STOP	GJ90 SERIES	630	GLYNN-JOHNSON

SET 39

1 EA	CONTINUOUS HINGE	780-112HD	CLR	HAGER
1 EA	EXIT DEVICE	33A-NL-OP	626	VON DUPRIN
1 EA	I/C CYLINDER	AS REQUIRED	626	SCHLAGE
1 EA	PULL	BF158	630	ROCKWOOD
1 EA	CLOSER	4040XP	689	LCN
1 EA	OVERHEAD STOP	GJ100 SERIES	630	GLYNN-JOHNSON
1 EA	ELECTRIC STRIKE	6300	630	VON DUPRIN
1 EA	SWEEP	200N	AL	NGP
1 EA	THRESHOLD	8425	AL	NGP
1 EA	POSITION SWITCH	1078	GRY	GE

**CARD READERS BY OTHERS.

**PROVIDE DROP PLATE AND BLADE STOP SPACERS AS REQUIRED FOR CLOSER INSTALLATION.

**SEALS BY DOOR SUPPLIER.

OPERATION: DOOR NORMALLY LOCKED AND CLOSED. VALID CARD READ ACTIVATES ELECTRIC STRIKE TO ALLOW ENTRY. AT DISCRETION OF FACILITY, ELECTRIC STRIKE CAN BE PROGRAMMED TO BE RELEASED TO ALLOW ENTRY. FREE EGRESS IS ALWAYS ALLOWED.

SET 40

EA	HINGES	AS SPECIFIED	652	HAGER
1 EA	STOREROOM LOCK	L9080R X 805A	626	SCHLAGE
2 EA	CLOSER	4040XP X CUSH	689	LCN
1 SET	AUTO FLUSHBOLTS	FB31P/FB41P	630	IVES
1 EA	DUSTPROOF STRIKE	DP2	626	IVES
1 EA	COORDINATOR	COR X FL	628	IVES
2 EA	MNTG BRACKETS	AS REQUIRED	628	IVES
2 EA	KICKPLATE	10" X 1" LDW	630	ROCKWOOD
1 EA	ASTRAGAL	5070CL	AL	NGP
1 SET	SEALS	5050C	BLK	NGP

SET 41

EA	HINGES	AS SPECIFIED	652	HAGER
1 EA	STOREROOM LOCK	L9080R X 805A	626	SCHLAGE
2 EA	CLOSER	4040XP	689	LCN
2 EA	WALL STOP	409	630	ROCKWOOD
1 SET	AUTO FLUSHBOLTS	FB31P/FB41P	630	IVES
1 EA	DUSTPROOF STRIKE	DP2	626	IVES
1 EA	COORDINATOR	COR X FL	628	IVES
2 EA	MNTG BRACKETS	AS REQUIRED	628	IVES
2 EA	KICKPLATE	10" X 1" LDW	630	ROCKWOOD

**ALLOW 180 DEGREE SWING.

SET 42

EA	HINGES	AS SPECIFIED	652	HAGER
1 EA	EXIT DEVICE	99L-2SI	626	VON DUPRIN
2 EA	I/C CYLINDER	AS REQUIRED	626	SCHLAGE
1 EA	CLOSER W/HOLD	4040XP-H	689	LCN
1 EA	WALL STOP	409	630	ROCKWOOD
1 EA	KICKPLATE	10" X 2" LDW	630	ROCKWOOD

SET 43

EA	HINGES	AS SPECIFIED	652	HAGER
1 EA	CLASSROOM LOCK	L9070R X 05A	626	SCHLAGE
1 EA	OVERHEAD STOP	GJ100 SERIES	630	GLYNN-JOHNSON

SET 44

1 EA	I/C CYLINDER	AS REQUIRED	626	SCHLAGE
------	--------------	-------------	-----	---------

**BALANCE OF HARDWARE BY DOOR SUPPLIER.

SET 45

EA	HINGES	AS SPECIFIED	630	HAGER
1 EA	STOREROOM LOCK	L9080R X 05A	626	SCHLAGE
1 EA	CLOSER	4040XP	689	LCN
1 EA	OVERHEAD STOP	GJ100 SERIES	630	GLYNN-JOHNSON
1 SET	WEATHERSTRIP	160S	AL	NGP
1 EA	SWEEP	200N	AL	NGP
1 EA	THRESHOLD	8425	AL	NGP

SET 46

1 EA	CONTINUOUS HINGE	780-224HD	CLR	HAGER
1 EA	EXIT DEVICE	99NL-OP	626	VON DUPRIN
1 EA	CYLINDER	AS REQUIRED	626	VON DUPRIN
1 EA	PULL	BF158	630	ROCKWOOD
1 EA	CLOSER	4040XP	689	LCN
1 EA	OVERHEAD STOP	GJ100 SERIES	630	GLYNN-JOHNSON
1 EA	KICKPLATE	10" X 2" LDW	630	ROCKWOOD
1 SET	WEATHERSTRIP	160S	AL	NGP
1 EA	SWEEP	200N	AL	NGP
1 EA	THRESHOLD	8425	AL	NGP

SET 47

EA	HINGES	AS SPECIFIED	630	HAGER
1 EA	ENTRANCE LOCK	L9453R X 05A	626	SCHLAGE
1 EA	CLOSER	4040XP	689	LCN
1 EA	OVERHEAD STOP	GJ100 SERIES	630	GLYNN-JOHNSON
1 SET	WEATHERSTRIP	160S	AL	NGP
1 EA	SWEEP	200N	AL	NGP
1 EA	THRESHOLD	8425	AL	NGP

SET 48

EA	HINGES	AS SPECIFIED	652	HAGER
1 EA	PRIVACY	L9040 X 05A X L283-722	626	SCHLAGE
1 EA	WALL STOP	409	630	ROCKWOOD

SET 49

EA	HINGES	AS SPECIFIED	652	HAGER
1 EA	STOREROOM LOCK	L9080R X 05A	626	SCHLAGE
2 EA	CLOSER	4040XP	689	LCN
2 EA	OVERHEAD STOP	GJ100 SERIES	630	GLYNN-JOHNSON
1 SET	AUTO FLUSHBOLTS	FB31P	630	IVES
1 EA	DUSTPROOF STRIKE	DP1	626	IVES

1 EA	COORDINATOR	COR X FL	628	IVES
2 EA	MNTG BRACKETS	AS REQUIRED	628	IVES
2 EA	KICKPLATE	10" X 1" LDW	630	ROCKWOOD
1 SET	ASTRAGAL	115NA	AL	NGP
1 SET	SEALS	5050C	BLK	NGP
1 EA	THRESHOLD	8425	AL	NGP

SET 50

1 EA	CLASSROOM LOCK	ND70RD X ATH	626	SCHLAGE
------	----------------	--------------	-----	---------

**BALANCE OF HARDWARE TO BE PROVIDED BY DOOR SUPPLIER.

SET 51

1 EA	CONTINUOUS HINGE	780-112HD X EPT PREP	CLR	HAGER
1 EA	CONTINUOUS HINGE	780-112HD	CLR	HAGER
1 EA	POWER TRANSFER	EPT-10	SP28	VON DUPRIN
1 EA	EXIT DEVICE	QEL3347A-NL-OP	626	VON DUPRIN
1 EA	EXIT DEVICE	3347EO	626	VON DUPRIN
1 EA	I/C CYLINDER	AS REQUIRED	626	SCHLAGE
2 EA	PULLS	BF158	630	ROCKWOOD
2 EA	CLOSER	4040XP	689	LCN
2 EA	OVERHEAD STOP	GJ100 SERIES	630	GLYNN-JOHNSON
1 EA	POWER SUPPLY	PS902 X 900-2RS	GRY	VON DUPRIN
2 EA	SWEEP	200N	AL	NGP
1 EA	THRESHOLD	8425	AL	NGP
2 EA	POSITION SWITCH	1078	GRY	GE

**CARD READER BY OTHERS.

**PROVIDE DROP PLATE AND BLADE STOP SPACERS AS REQUIRED FOR CLOSER INSTALLATION.

**SEALS BY DOOR SUPPLIER.

OPERATION: DOORS NORMALLY LOCKED AND CLOSED. VALID CARD READ ACTIVATES ELECTRIC LATCH RETRACTION EXIT DEVICE TO ALLOW ENTRY. AT DISCRETION OF FACILITY, ELECTRIC LATCH RETRACTION EXIT DEVICE CAN BE PROGRAMMED TO BE RETRACTED TO ALLOW ENTRY. FREE EGRESS IS ALWAYS ALLOWED.

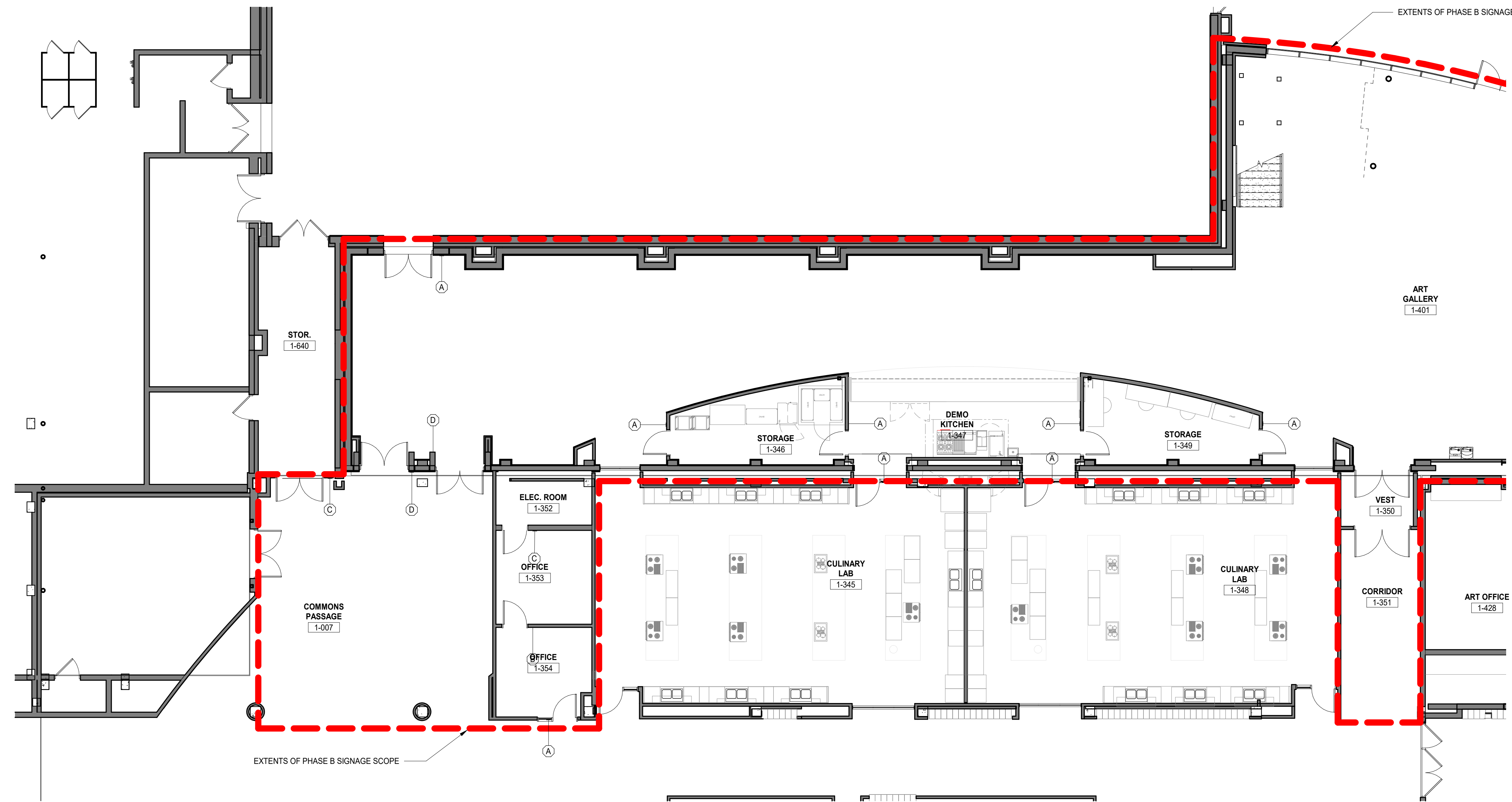
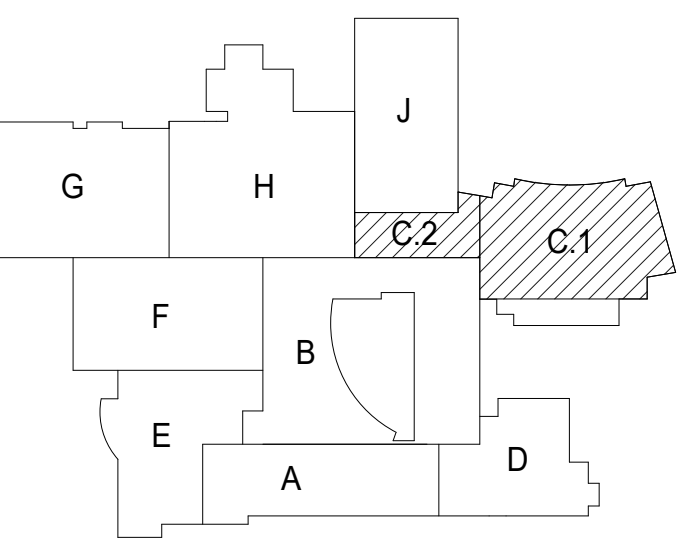
SET 52

EA	HINGES	AS SPECIFIED	652	HAGER
1 EA	CLASSROOM SEC	L9071R X 05A	626	SCHLAGE
1 EA	SENTRONIC CLOSER	4040SE	689	LCN
1 EA	MAG HOLD OPEN	SEM7850	689	LCN
1 EA	OVERHEAD STOP	GJ100SE	630	GLYNN-JOHNSON
1 SET	SEALS	5050C	BLK	NGP

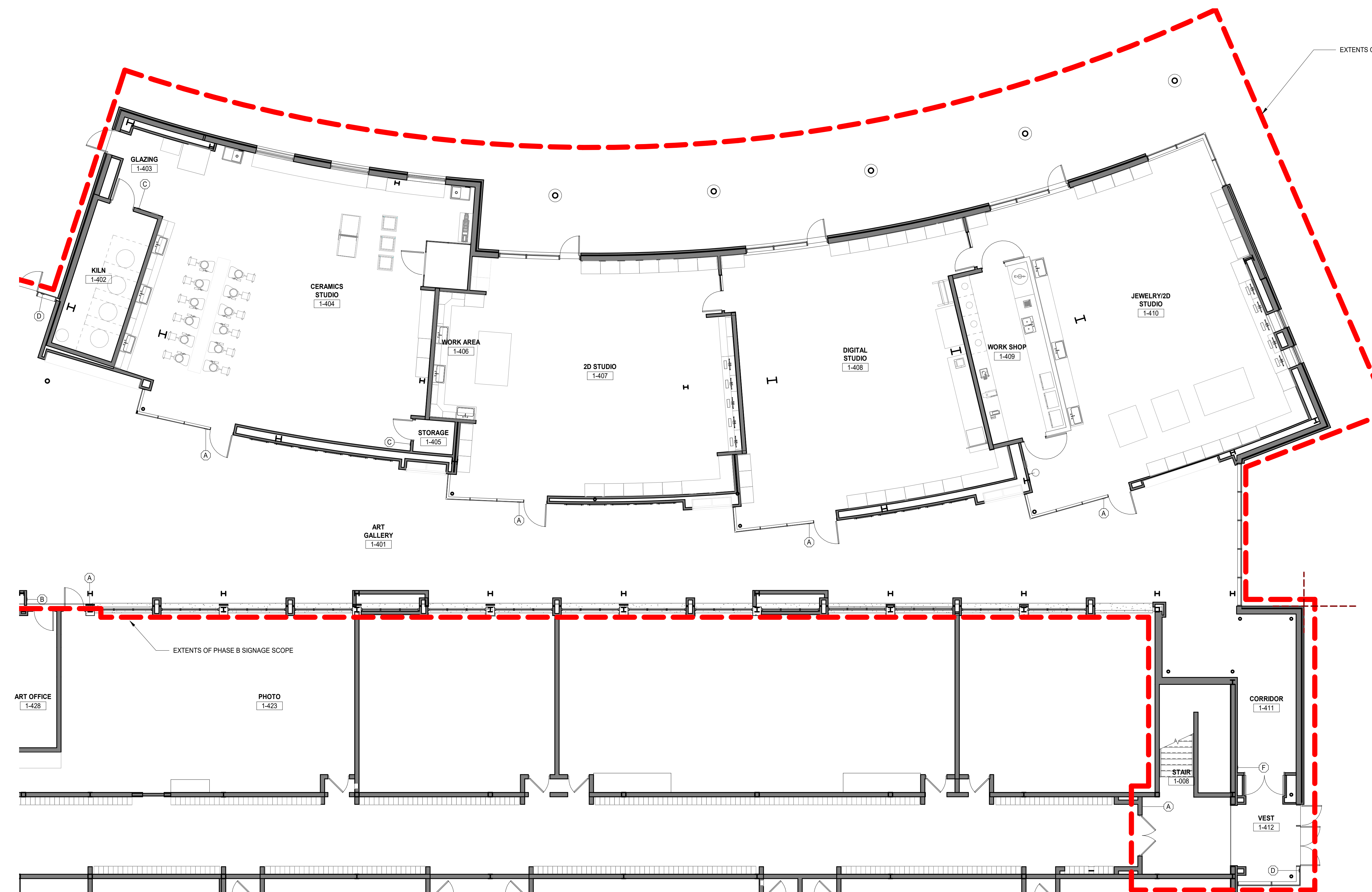
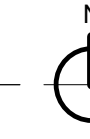
SET 53

2 EA	CONTINUOUS HINGE	780-224HD	CLR	HAGER
2 EA	EXIT DEVICE	9927L-F X LBR	626	VON DUPRIN
2 EA	I/C CYLINDER	AS REQUIRED	626	SCHLAGE
2 EA	CLOSER	4040XP	689	LCN
2 EA	MAG HOLD OPEN	SEM7850	689	LCN
2 EA	KICKPLATE	10" X 1" LDW	630	ROCKWOOD
1 EA	ASTRAGAL	5070CL	AL	NGP
1 SET	SEALS	5050C	BLK	NGP

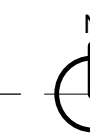
****PROVIDE EXTENSIONS AS NEEDED FOR THE MAGNETIC HOLD OPENS.**



2 SIGNAGE - LEVEL 1 - AREA C.2
SCALE: 1/8" = 1'-0"



1 SIGNAGE - LEVEL 1 - AREA C.1
SCALE: 1/8" = 1'-0"



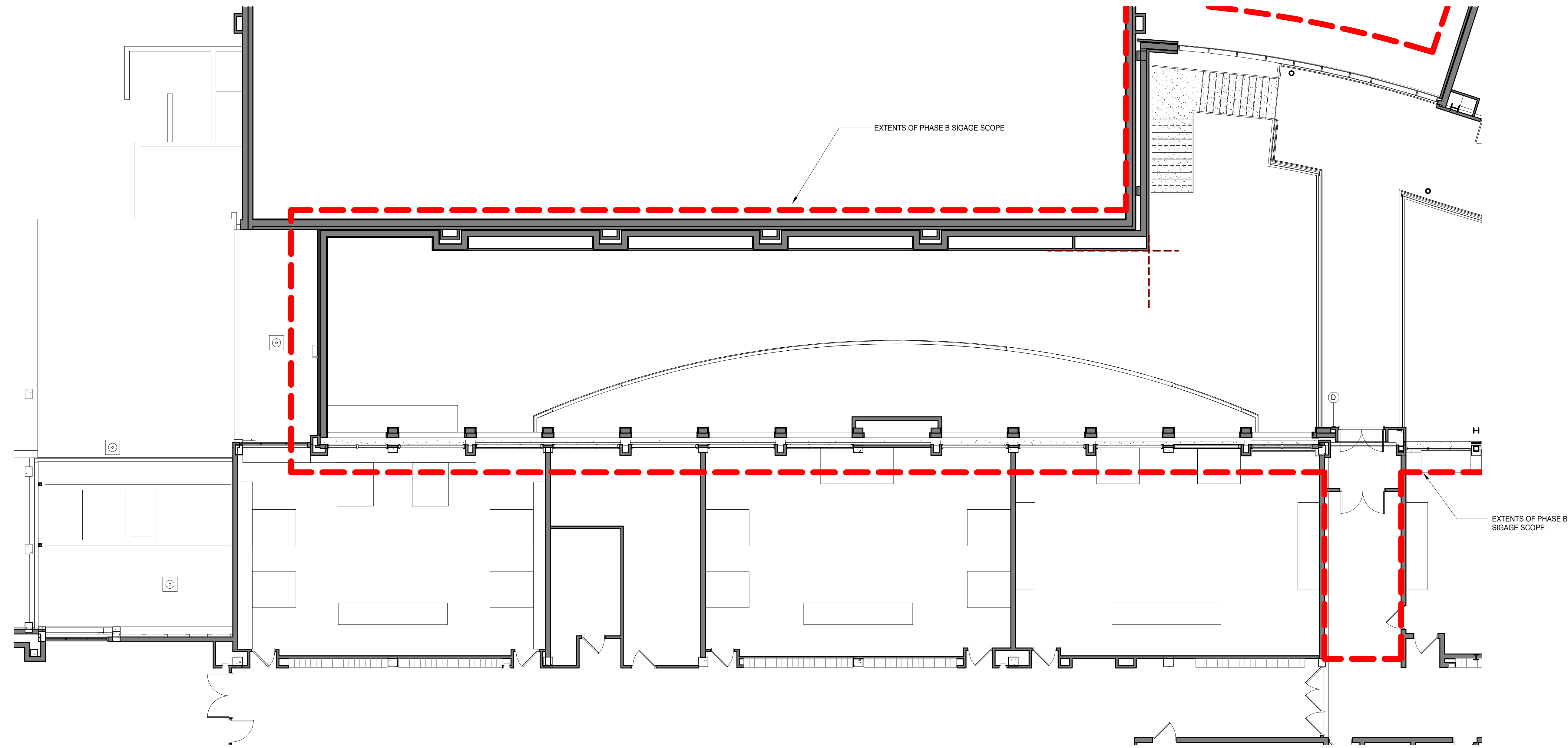
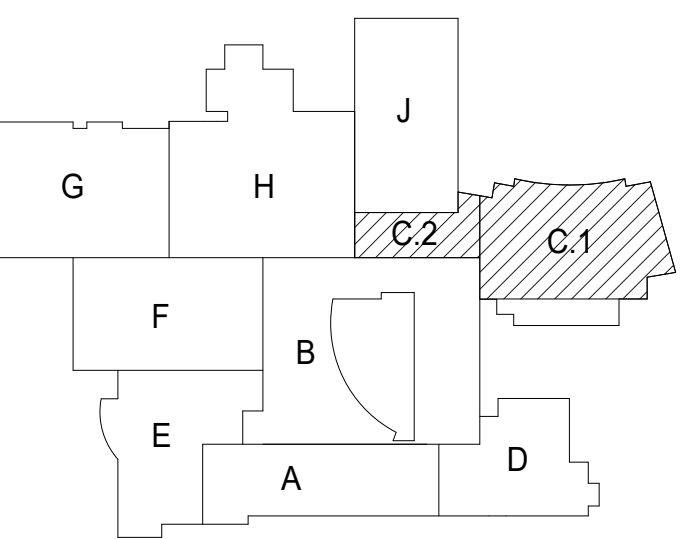
10/22/2019 11:18:48 AM
 C:\Users\jason\Documents\025274-42_DSS_Arch_2019_Central_layout.rvt
 Wight & Co. © Copyright 2019 All rights reserved. No part of these documents may be reproduced, stored, or transmitted in any form or by any means, electronic, mechanical, photocopying, recording or otherwise, without the prior written consent of Wight & Co.



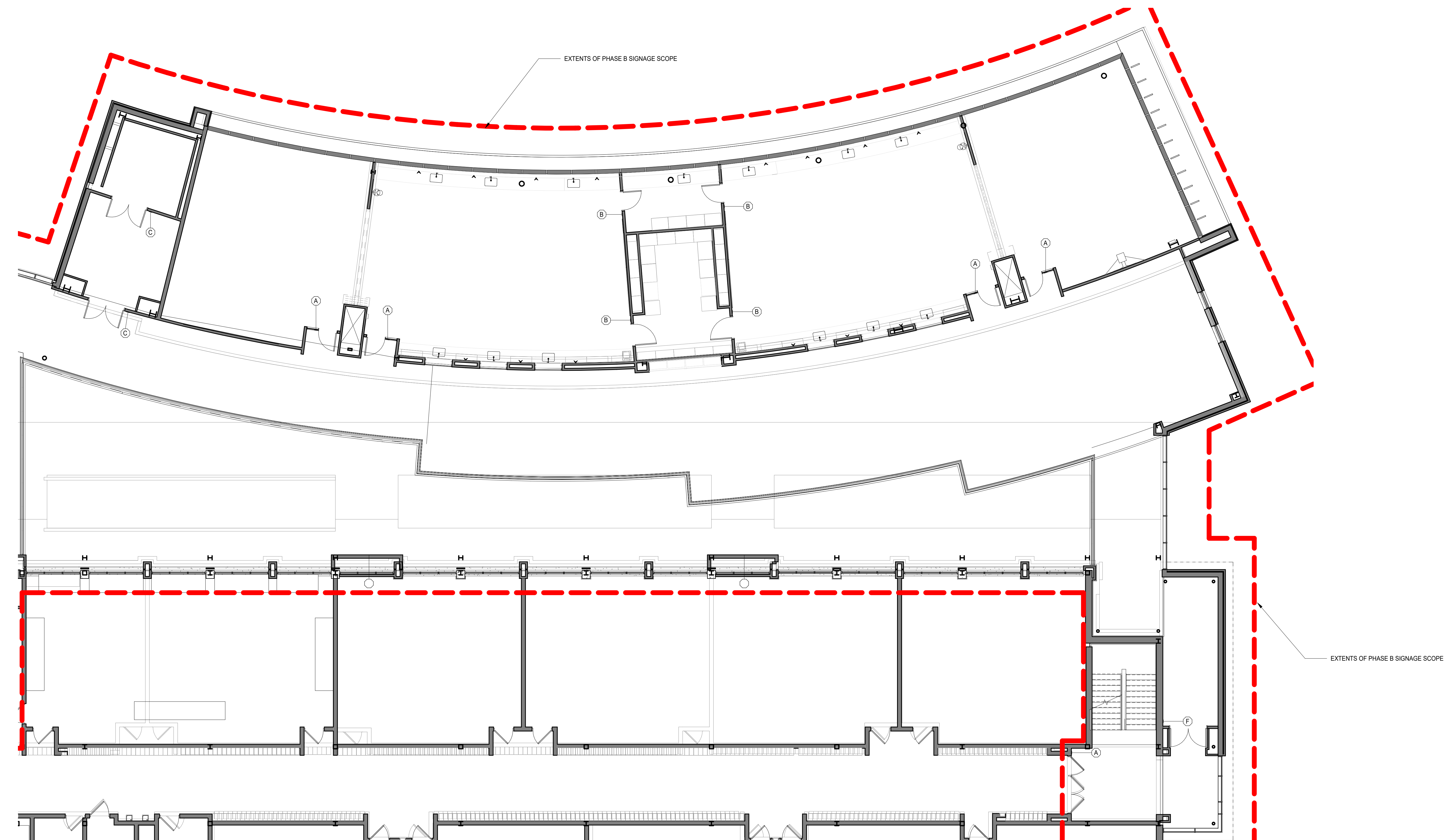
COMMUNITY HIGH SCHOOL
DISTRICT 99

Wight

Wight & Company
wightco.com
2500 North Frontage Road
Darien, IL 60561
P 630.969.7000
F 630.969.7979



2 LEVEL 2 - AREA C.2 SIGNAGE
SCALE: 1/8" = 1'-0"



1 LEVEL 2 - AREA C.1 SIGNAGE
SCALE: 1/8" = 1'-0"

**NOT FOR
CONSTRUCTION**

33 ISSUED FOR ADDENDUM 5 - B07 10.02.2019
REV. DATE

**MFP
IMPLEMENTATION -
SOUTH**

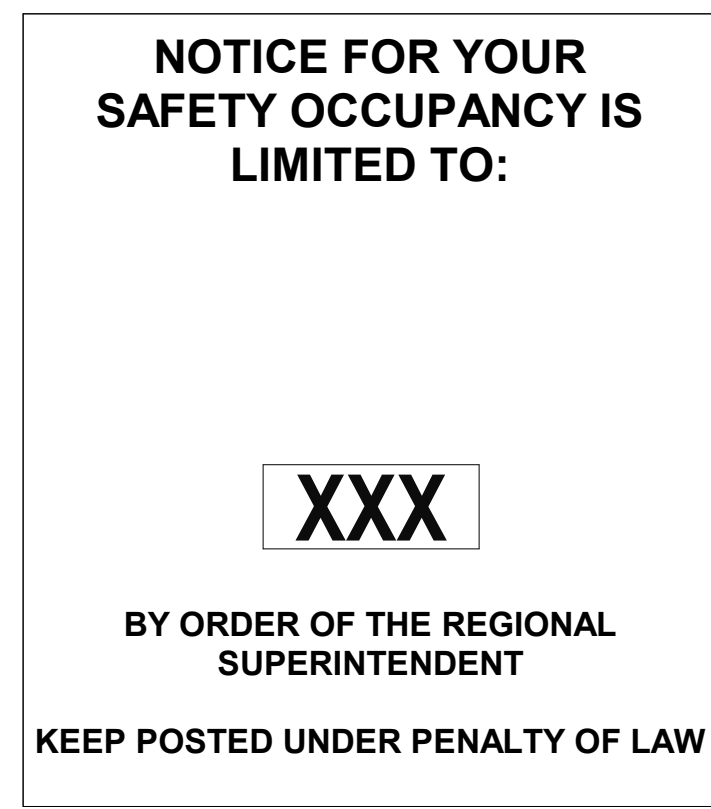
1436 NORFOLK STREET
DOWNERS GROVE, IL 60516

**SIGNAGE PLAN LEVEL 2
AREA C**

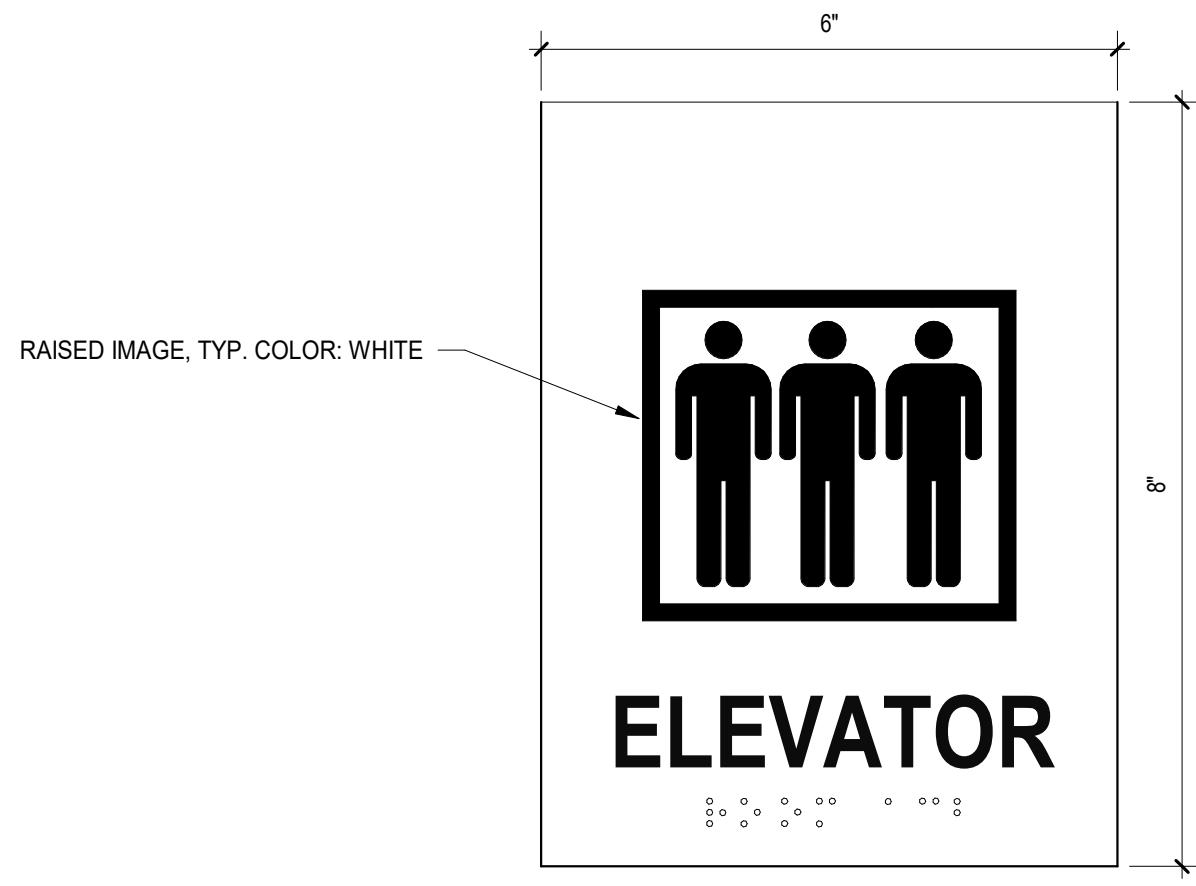
Project Number:
5274-42
Drawn By:
Author
Sheet:

A12.02C

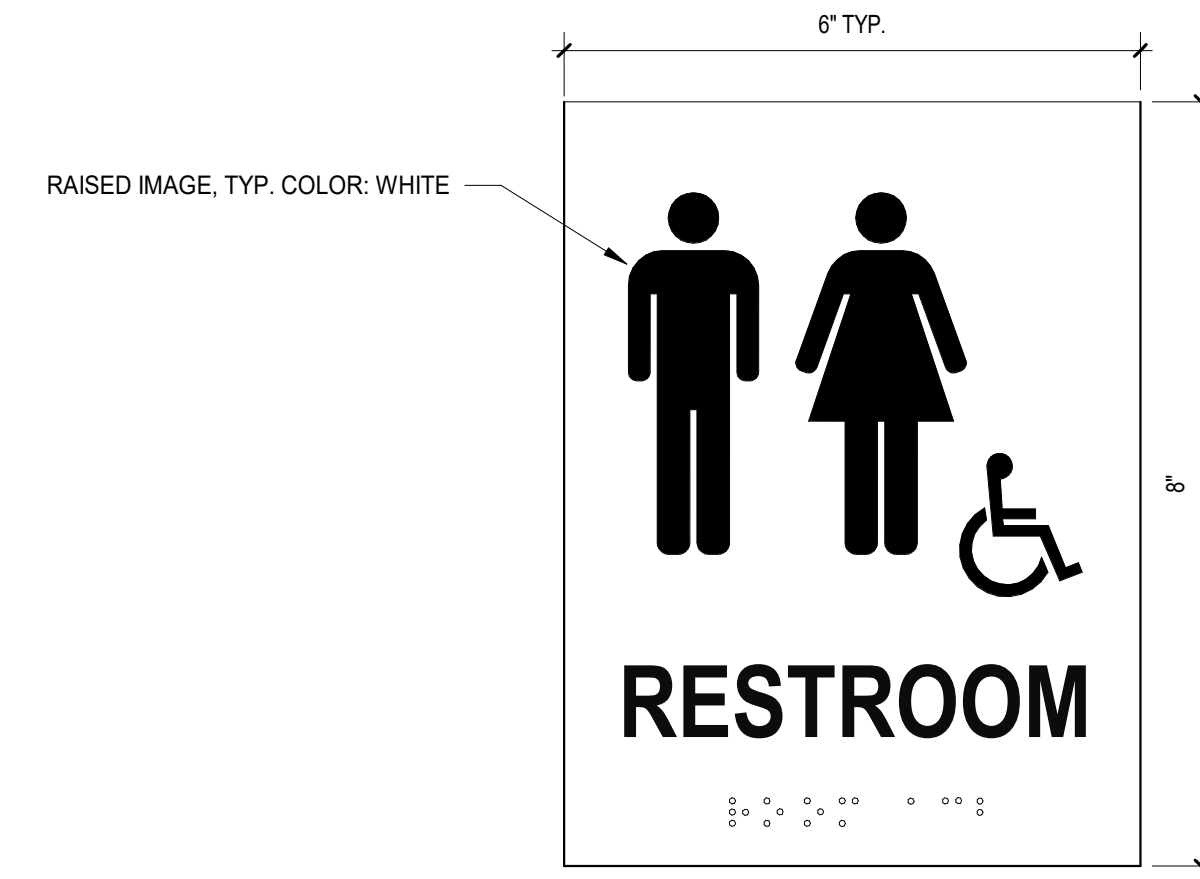
- GENERAL NOTES**
- SIGNAGE SHALL COMPLY WITH ADA STANDARDS.
 - SIGNAGE PANEL COLOR TO BE SELECTED BY ARCHITECT FROM MANUFACTURER'S FULL RANGE OF COLORS.
 - ALL SIGNS TO BE MOUNTED CENTERED AT +5'-0" A.F.F., U.N.O.
 - PANEL SIGNS REFER TO SPECIFICATION SECTION 101600.
 - INTEGRAL RAISED LETTERING WITH INTEGRAL GRADE 2 BRILLE, TYP.: FONT: ARIAL NARROW, FONT HEIGHT: 3/4", FONT COLOR: WHITE.



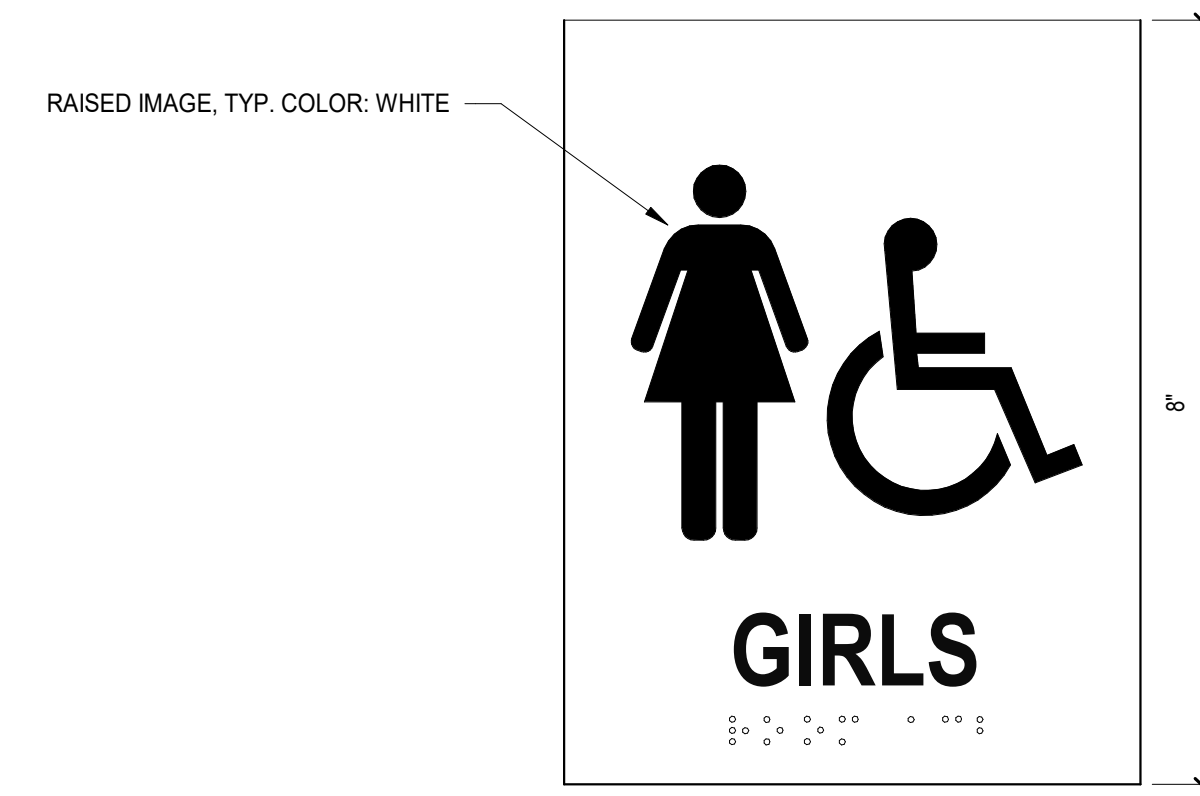
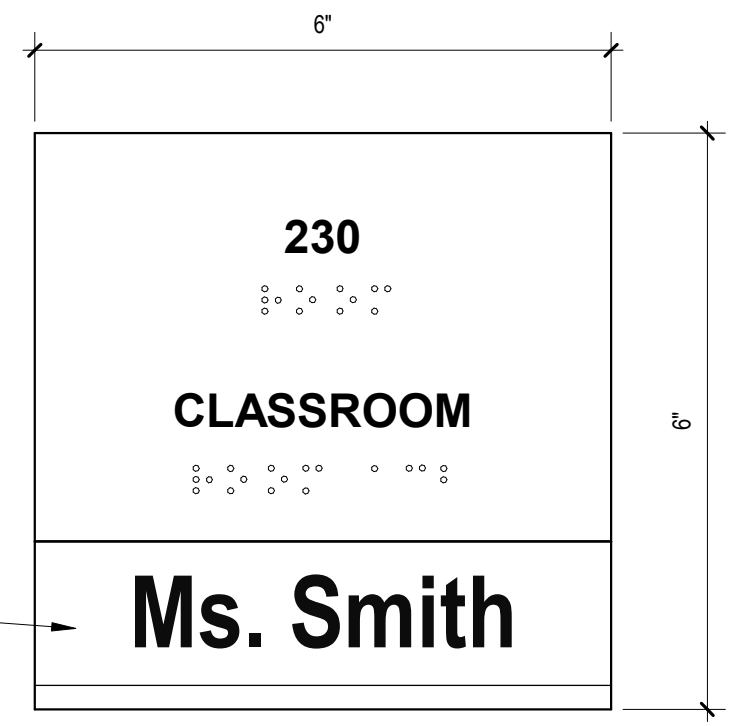
J SIGNAGE TYPE J - OCCUPANCY
SCALE: 6" = 1'-0"



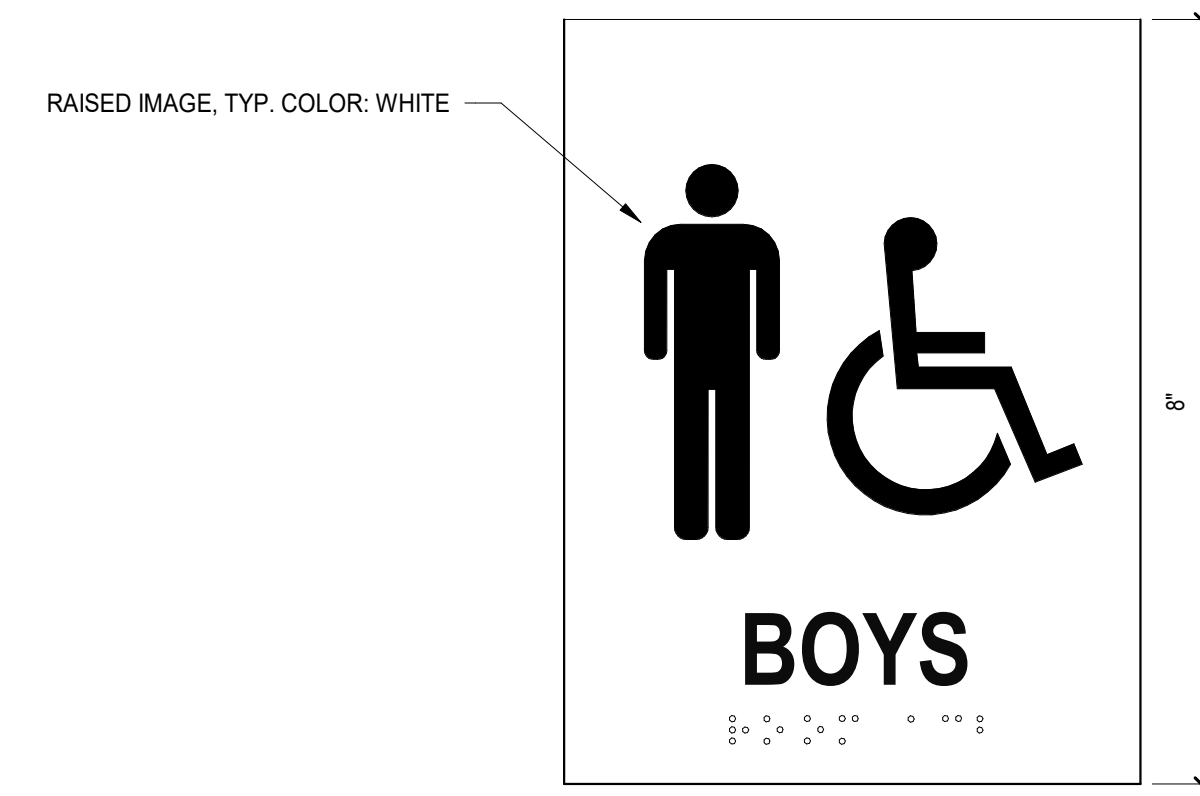
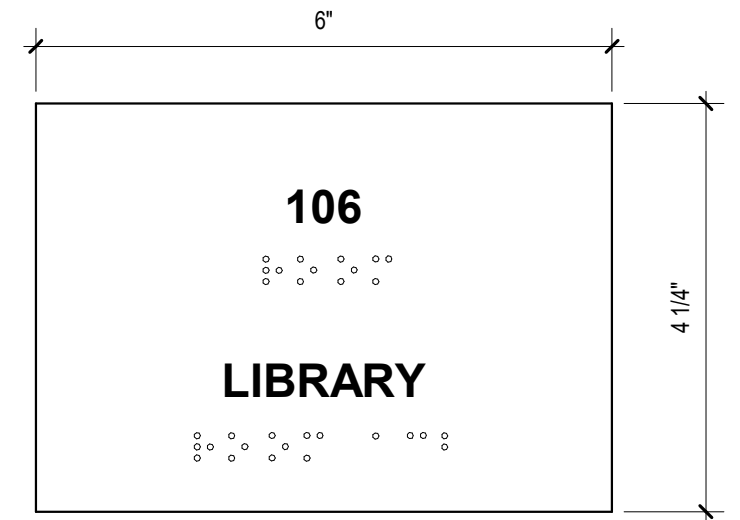
G SIGNAGE TYPE G - ELEVATOR
SCALE: 6" = 1'-0"



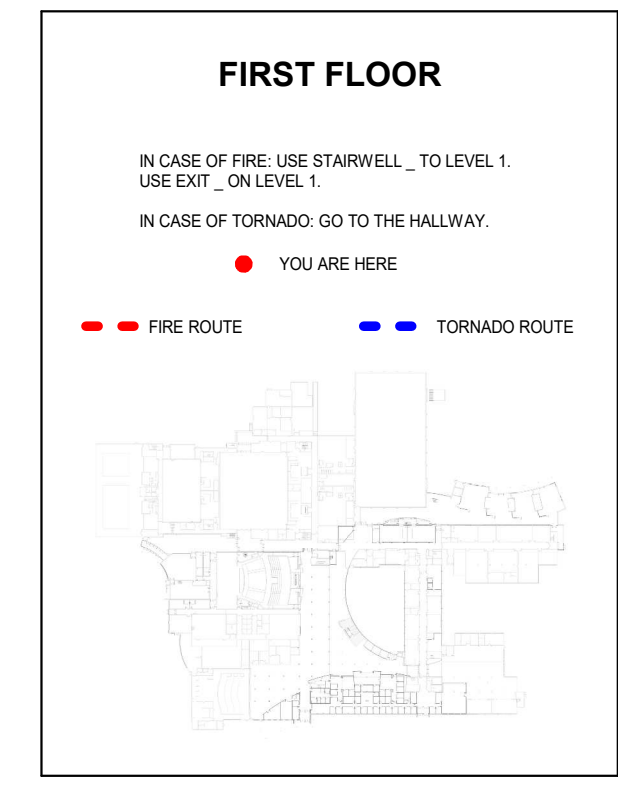
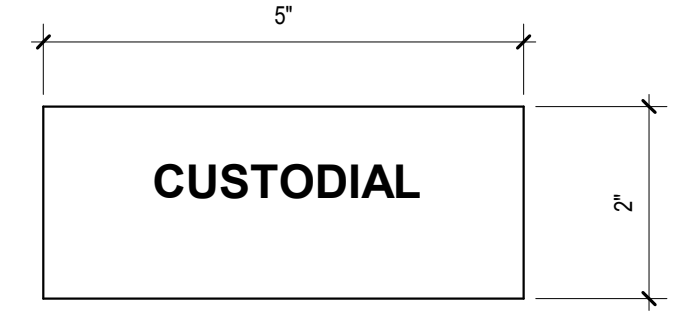
A SIGNAGE TYPE A - CLASSROOM/OFFICE
SCALE: 6" = 1'-0"



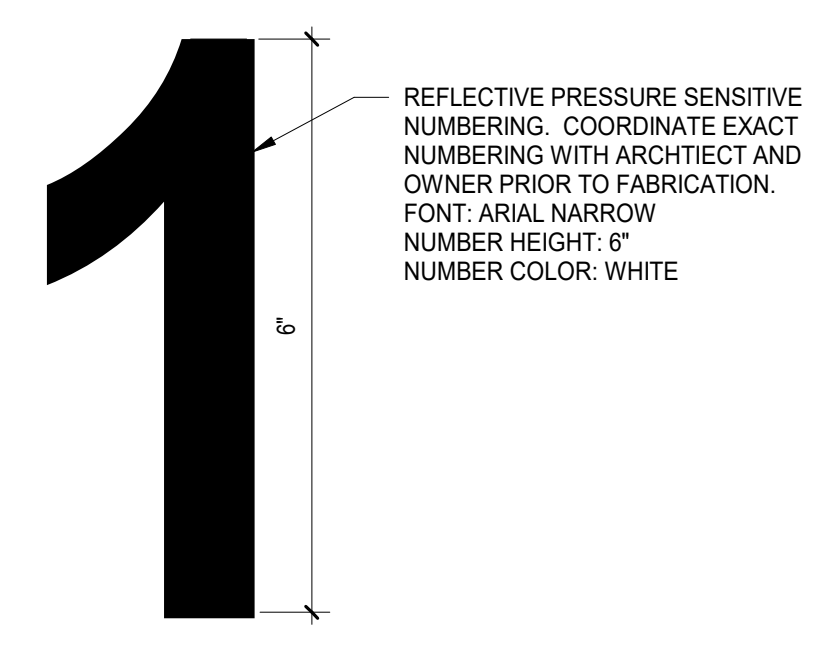
B SIGNAGE TYPE B - SPECIALTY ROOMS
SCALE: 6" = 1'-0"



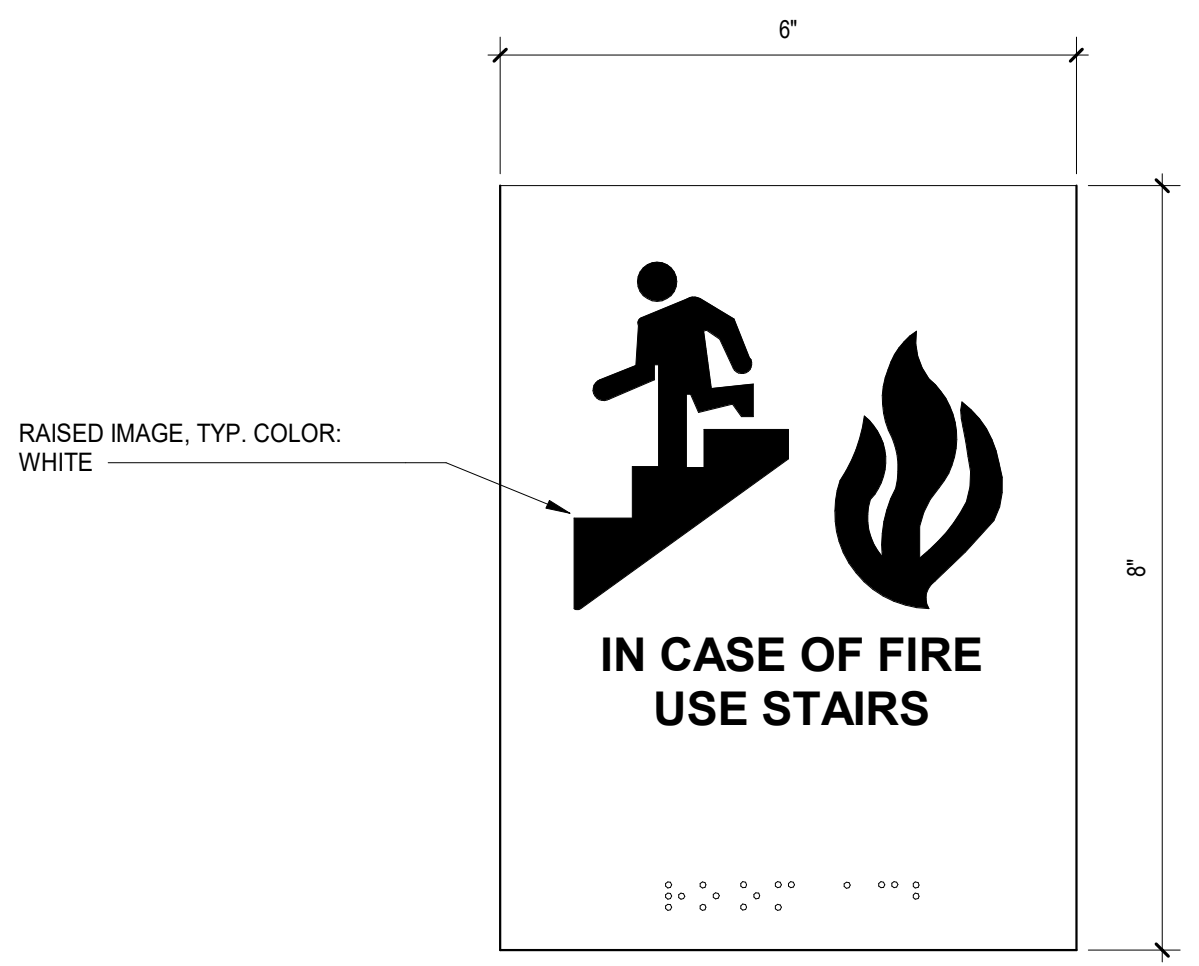
C SIGNAGE TYPE C - UTILITY
SCALE: 6" = 1'-0"



M SIGNAGE TYPE M - EGRESS MAP
SCALE: 6" = 1'-0"

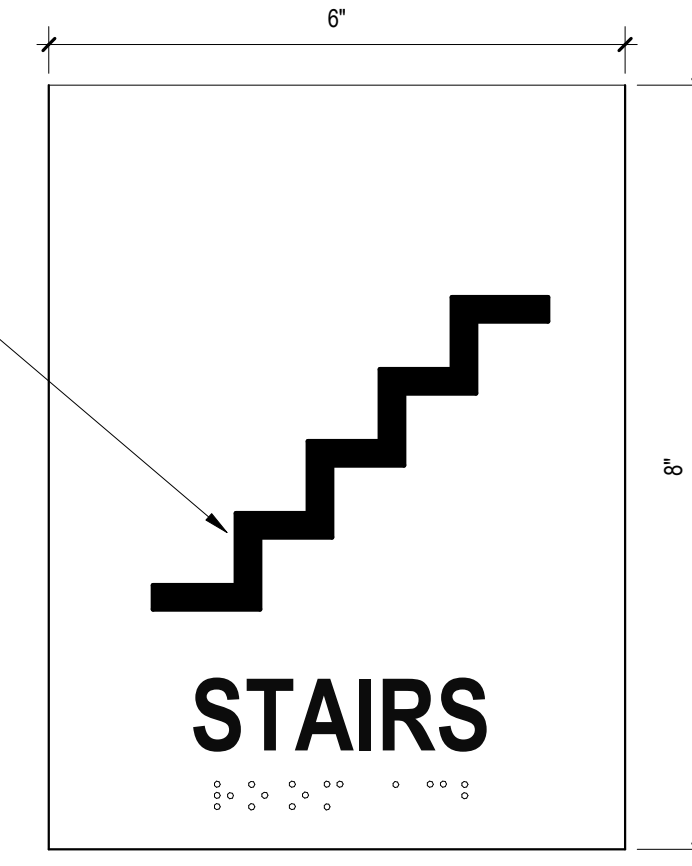


K SIGNAGE TYPE K - EXTERIOR
SCALE: 6" = 1'-0"

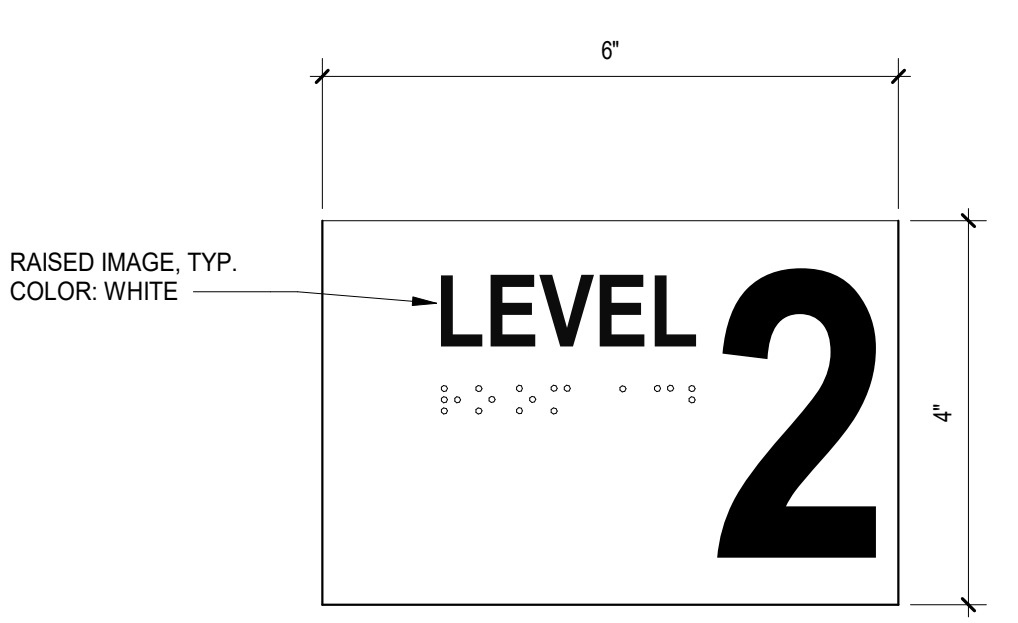


H SIGNAGE TYPE H - ELEVATOR (FIRE)
SCALE: 6" = 1'-0"

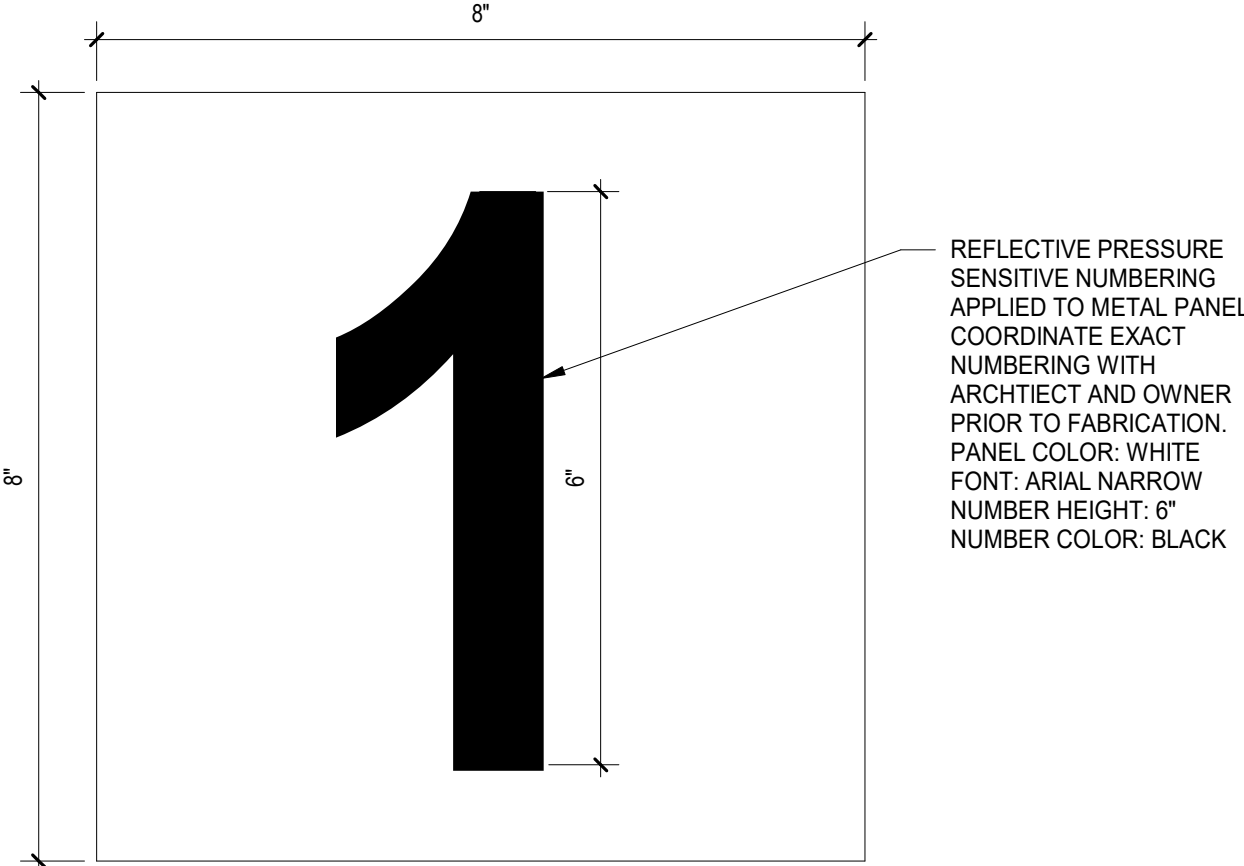
E SIGNAGE TYPE E - TOILET ROOMS
SCALE: 6" = 1'-0"



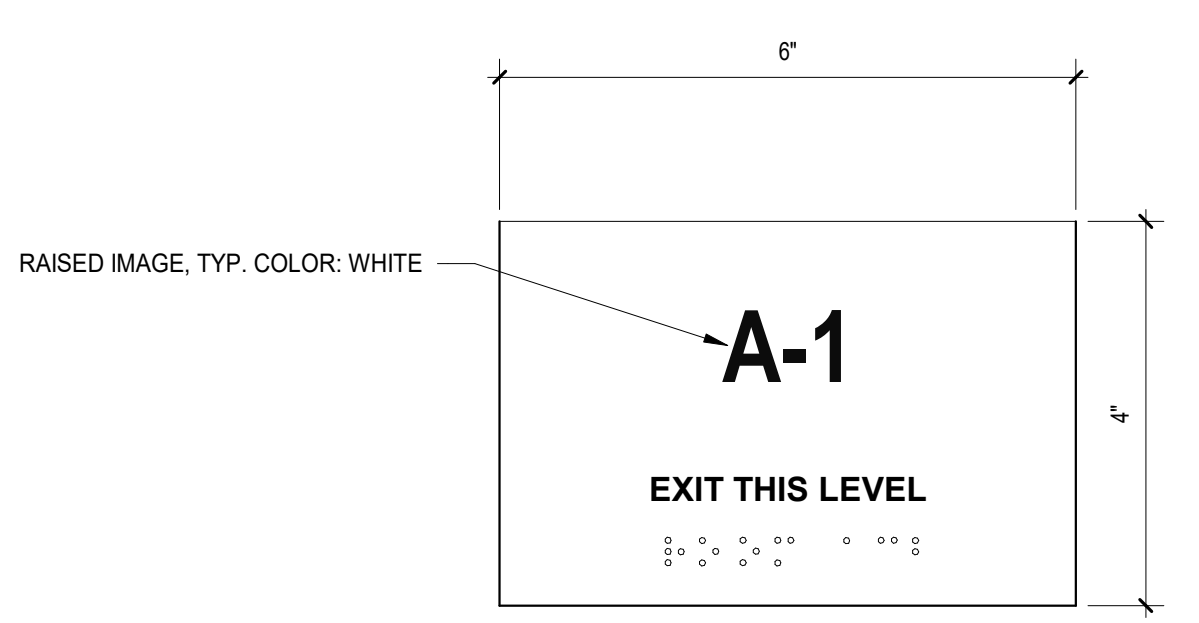
F SIGNAGE TYPE F - STAIRS
SCALE: 6" = 1'-0"



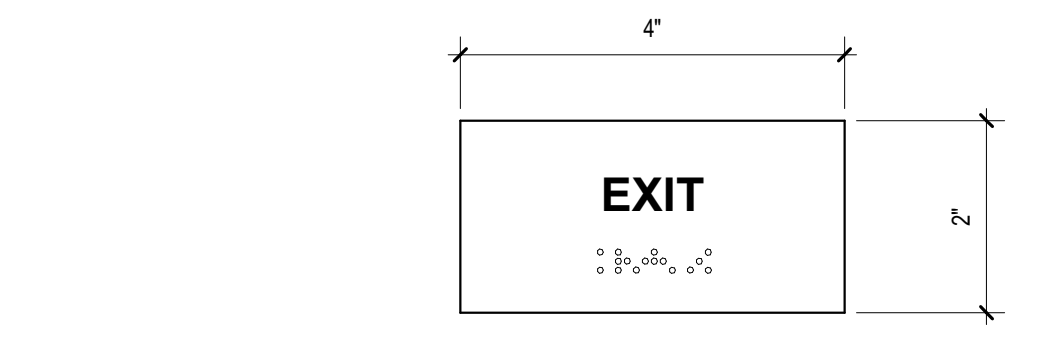
P SIGNAGE TYPE P - STAIRS EXIT
SCALE: 6" = 1'-0"



L SIGNAGE TYPE L - EXTERIOR
SCALE: 6" = 1'-0"



I SIGNAGE TYPE I - STAIRS EXIT
SCALE: 6" = 1'-0"



D SIGNAGE TYPE D - EXIT
SCALE: 6" = 1'-0"

REV	ISSUE	DATE
33	ISSUED FOR ADDENDUM 5 - BG7	10.02.2019
	ISSUED FOR CONSTRUCTION - PHASE A	05.08.2019
8	ISSUED FOR ADDENDUM 3 - BG3	03.29.2019
	ISSUED FOR BID GROUP 3 - PHASE A	03.11.2019
	ISSUED FOR SCHEMATIC DESIGN - PHASE A	09.19.2018

MFP IMPLEMENTATION - SOUTH

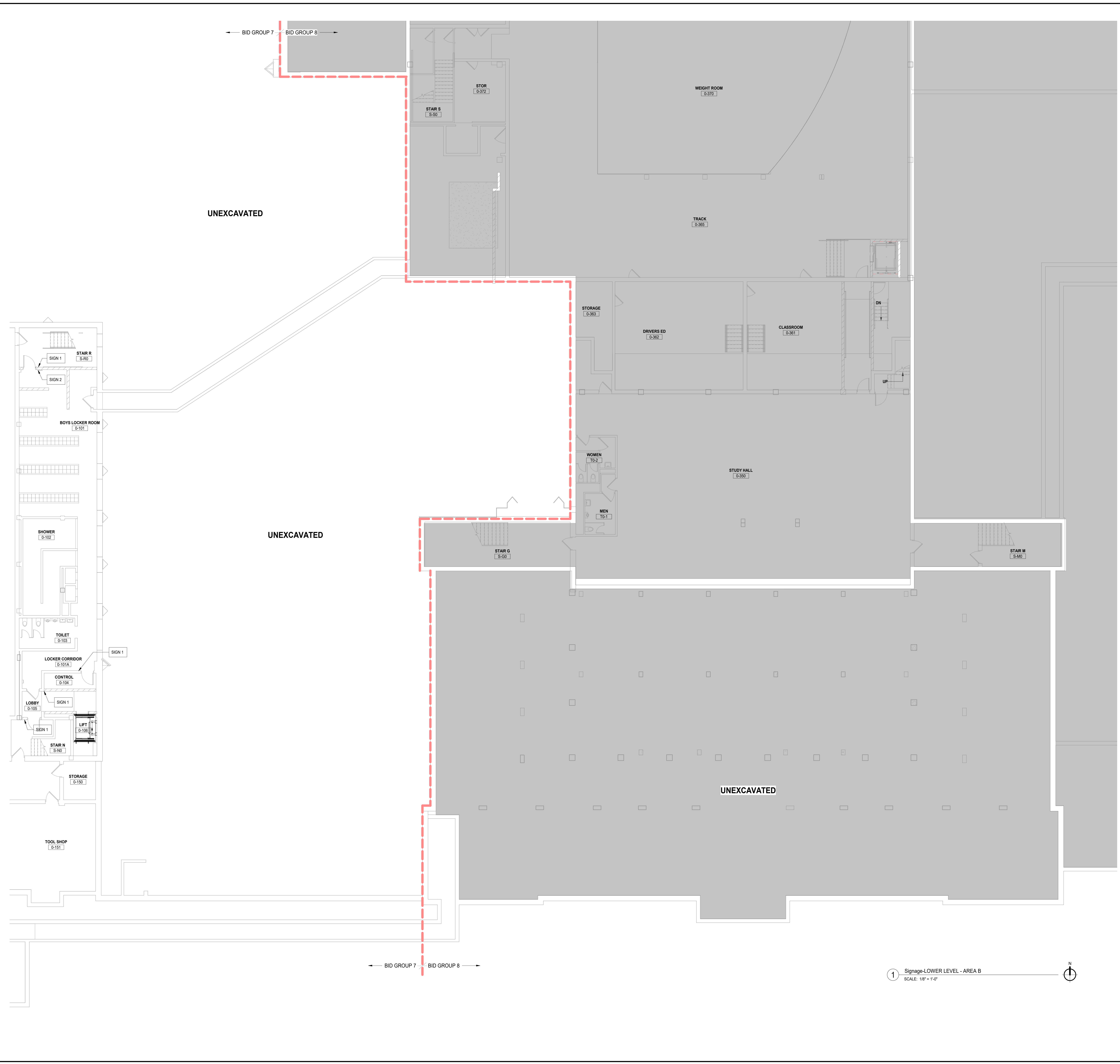
1436 NORFOLK STREET
DOWNERS GROVE, IL 60516

SIGNAGE DETAILS

Project Number:
5274-42
Drawn By:
A.SASSILA
Sheet:

10/22/2019 3:50:14 PM C:\Users\ssassila\Documents\5274-42_DSS_Arch_2019_Central_Implement.rvt Wight & Co. © Copyright 2018 All rights reserved. No part of these documents may be reproduced, stored, or transmitted in any form or by any means, electronic, mechanical, photocopying, recording or otherwise, without the prior written consent of Wight & Co.

8/10/2019 11:28:27 AM
 C:\Users\mbarber\Documents\02-5274-42_DCN_Arch_2019_Central_mbarber\NOC\CV4
 Wight & Co. © Copyright 2019. All rights reserved. No part of these documents may be reproduced, stored, or transmitted in any form or by any means, electronic, mechanical, photocopying, recording or otherwise, without the prior written consent of Wight & Co.



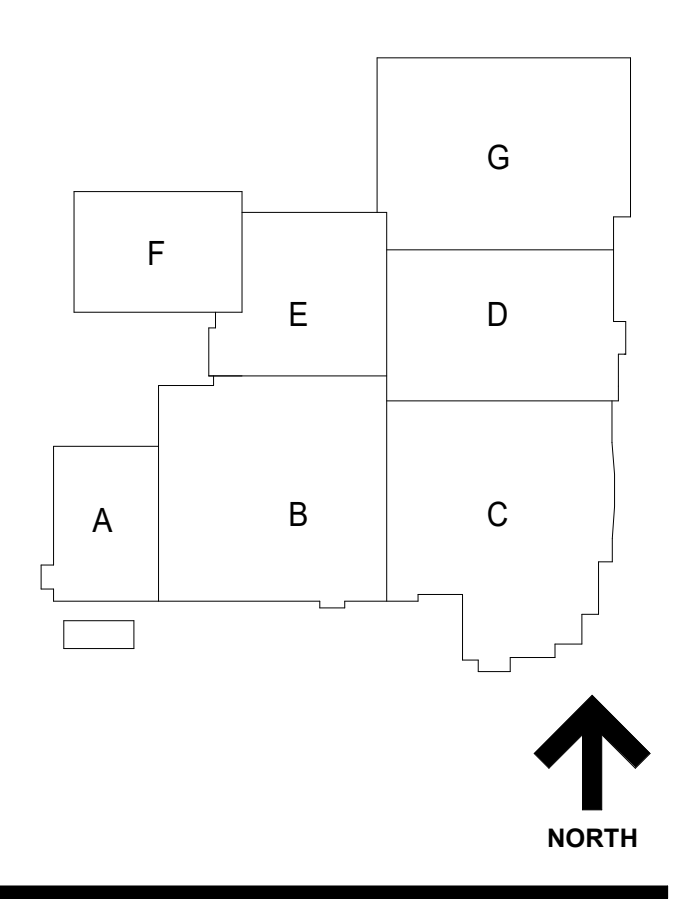
- GENERAL NOTES**
1. REFER TO SHEET 00.2 FOR TYPICAL FOURRE MOUNTING HEIGHTS AND ADA COMPLIANT PLANS, ELEVATIONS, AND DETAILS.
 2. REFER TO X2 SERIES FOR OVERALL ARCHITECTURAL FLOOR PLANS AND PHASING PLANS.
 3. NEW SLEEVES AND OPENINGS IN FIRE RATED FLOOR, WALL & CEILING CONSTRUCTION ARE TO BE SEALED WITH FIRE SAFETY MATERIAL. REFER TO 01 SERIES LIFE SAFETY DRAWINGS FOR LOCATION OF RATED CONSTRUCTION.
 4. NEW SLEEVES AND OPENINGS IN ACoustICAL SEPARATION WALLS AND FLOORS SHALL BE SEALED PER DETAILS ON AC SERIES SHEETS.
 5. FOR MASONRY WALL PATCHING, TOOTH-IN COURSING INTO EXISTING MASONRY.
 6. ALL MISC ITEMS (CHALKBOARDS, PENCIL SHARPENERS, ETC) THAT INTERFERE WITH THE COMPLETION OF CONTRACT WORK ARE TO BE REINSTALLED AT NO ADDITIONAL COST TO THE OWNER. COORDINATE LOCATIONS WITH ARCHITECT (INCLUDING THOSE NOT TAGGED HERE).
 7. ALL AREAS AFFECTED BY DEMOLITION TO BE PATCHED, REPAIRED AND LEVELED TO MATCH EXISTING ADJACENT SURFACE.
 8. REFER TO A12 SERIES FOR OWNER PROVIDED FTE THAT REQUIRES BLOCKING OR OTHER CONTRACT WORK.
 9. REFER TO A4 SERIES FOR CASEWORK PLANS AND ELEVATIONS (INCLUDING THOSE NOT TAGGED HERE).
 10. DELINEATION OF BID GROUPS PROVIDED FOR BIDDER REFERENCE - CONFIRM FULL SCOPE OF WORK WITH THE CONSTRUCTION MANAGER, INCLUDING INCIDENTAL WORK NOT SHOWN HERE.

DISTRICT 99

COMMUNITY HIGH SCHOOL DISTRICT 99

Wight

Wight & Company
 wightco.com
 2500 North Frontage Road
 Darien, IL 60561
 P 630.969.7000
 F 630.969.7979



ISSUED FOR CONSTRUCTION - 07.26.2019
 PHASE B

REV	ISSUE	DATE

MFP IMPLEMENTATION - NORTH

4436 MAIN STREET
 DOWNERS GROVE, IL 60515

SIGNAGE PLAN - LOWER LEVEL - AREA B (PHASE B)

Project Number:
 5274-42
 Drawn By:
 DS
 Sheet:
A11.00B.b

1 Signage-LOWER LEVEL - AREA B
 SCALE: 1/8" = 1'-0"

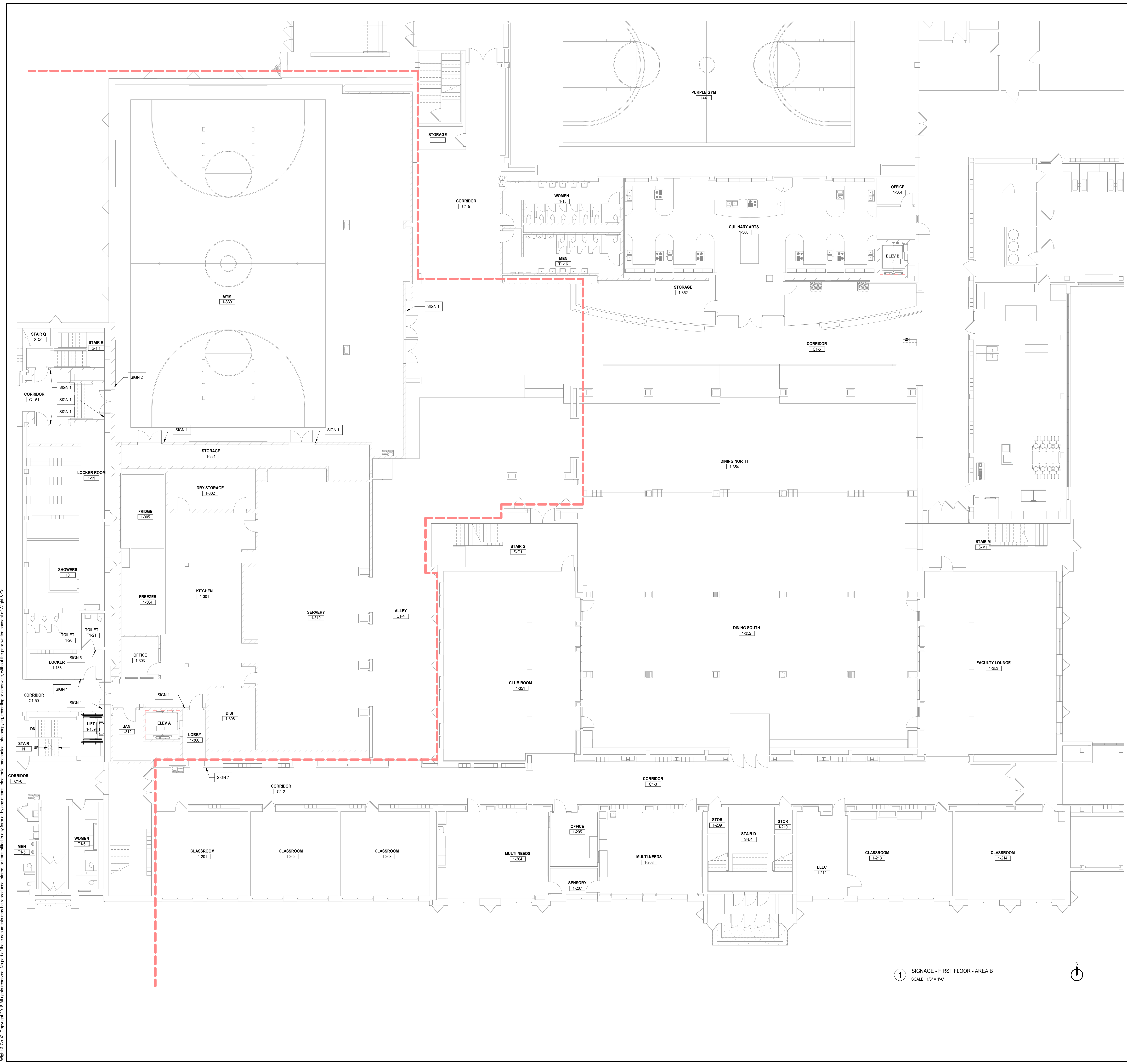
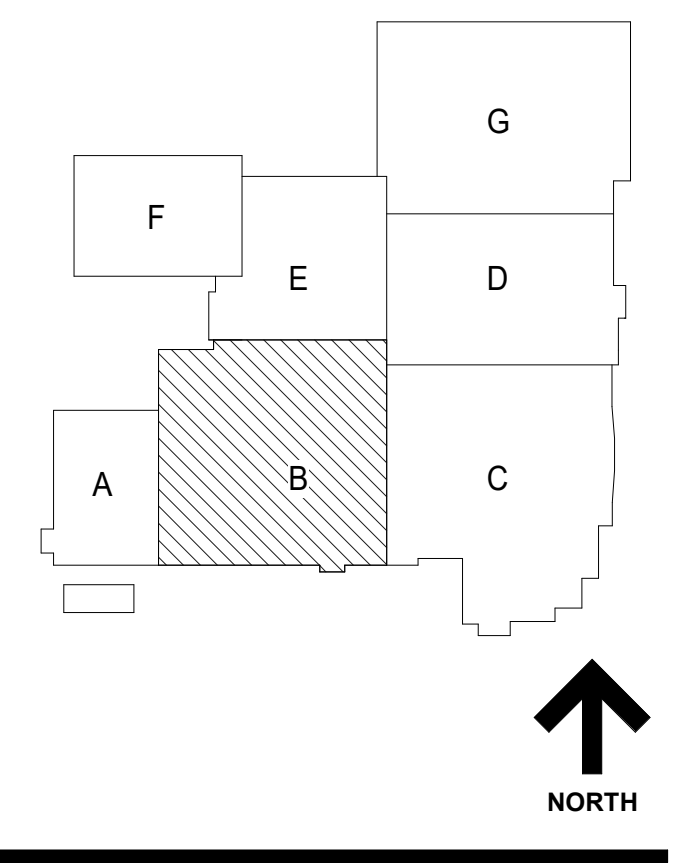
- GENERAL NOTES**
1. SEE SHEET A11.20 FOR SIGNAGE TYPES AND ELEVATIONS
 2. PROVIDE NEW CUT VINYL DOOR NUMBERS FOR ALL EXTERIOR DOORS. REFER TO DETAIL FOR EXTERIOR DOOR NUMBER SIGNAGE. VERIFY NUMBERING SEQUENCE WITH LOCAL FIRE DEPARTMENT.
 3. SIGNAGE SHALL COMPLY WITH ADA STANDARDS
 4. SIGNAGE PANEL COLOR TO BE SELECTED BY ARCHITECT FROM MANUFACTURER'S FULL RANGE OF COLORS.
 5. ALL SIGNS TO BE MOUNTED CENTERED AT 4'-5" A.F.F., U.N.O.



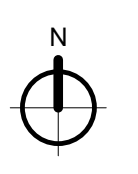
COMMUNITY HIGH SCHOOL
DISTRICT 99



Wight & Company
wightco.com
2500 North Frontage Road
Darien, IL 60561
P 630.969.7000
F 630.969.7979



1 SIGNAGE - FIRST FLOOR - AREA B
SCALE: 1/8" = 1'-0"



8/10/2019 11:40:01 AM
 C:\Users\barbarad\Documents\02-5274-42_DCN_Arch_2019_Central_mhadesha\NOC\4-1
 Wight & Co. © Copyright 2019 All rights reserved. No part of these documents may be reproduced, stored, or transmitted in any form or by any means, electronic, mechanical, photocopying, recording or otherwise, without the prior written consent of Wight & Co.

ISSUED FOR CONSTRUCTION - PHASE B 07.26.2019

REV ISSUE DATE
MFP IMPLEMENTATION - NORTH

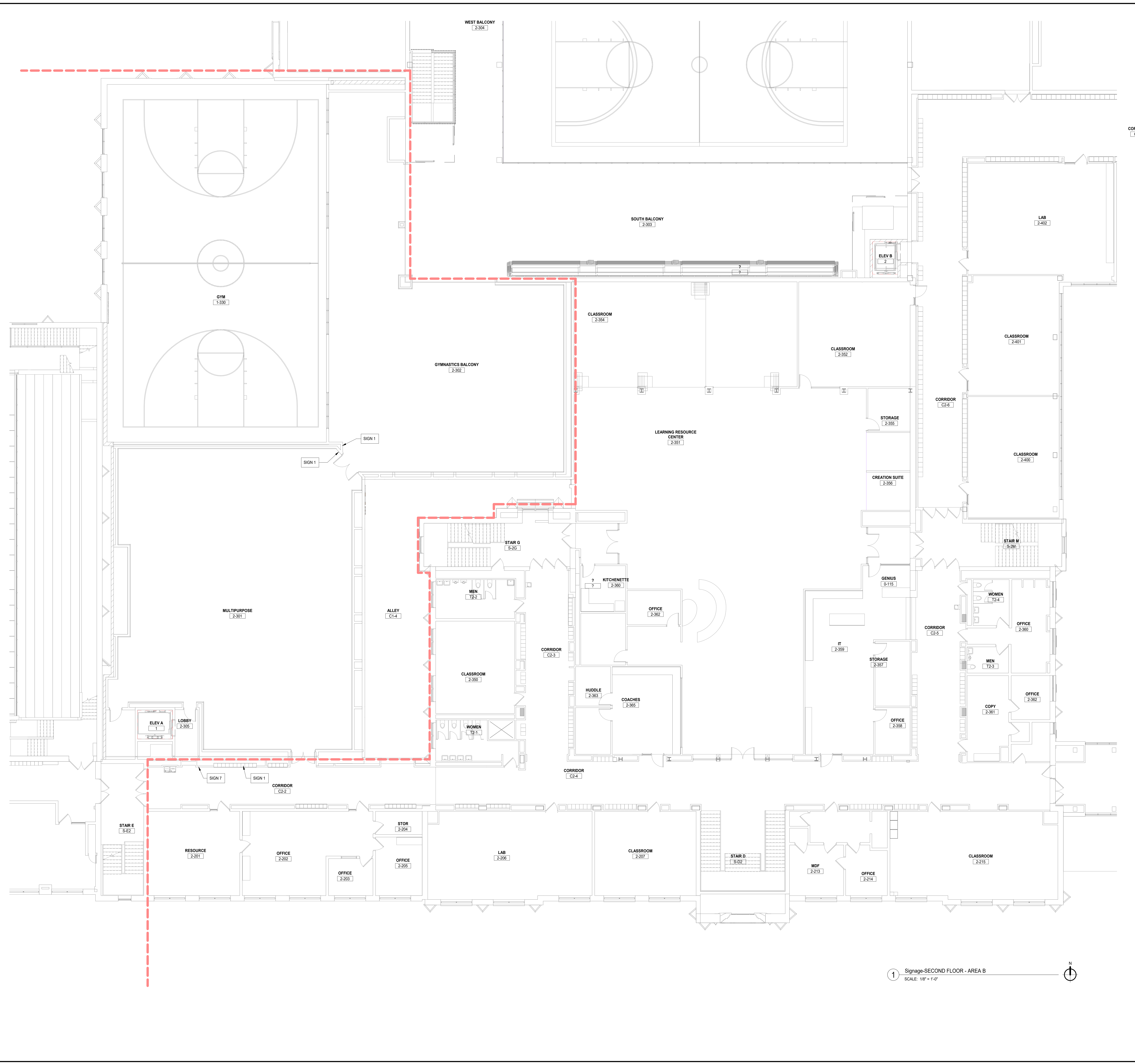
4436 MAIN STREET
DOWNERS GROVE, IL 60515

SIGNAGE PLAN - LEVEL 1
AREA B (PHASE B)

Project Number:
5274-42
Drawn By:
DS
Sheet:

A11.01B.b

8/10/2019 11:40:08 AM
 C:\Users\barbari\Documents\02-5274-42_DCN_Arch_2019_Central_mharden\NOC\Arch\Wight & Co. © Copyright 2019 All rights reserved. No part of these documents may be reproduced, stored, or transmitted in any form or by any means, electronic, mechanical, photocopying, recording or otherwise, without the prior written consent of Wight & Co.



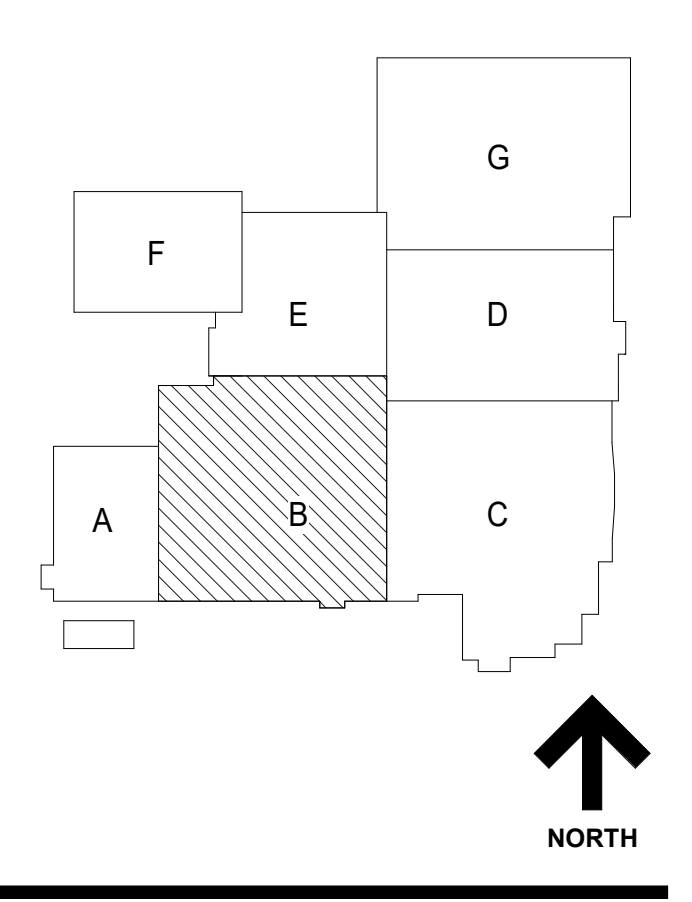
- GENERAL NOTES**
1. SEE SHEET A11.20 FOR SIGNAGE TYPES AND ELEVATIONS
 2. PROVIDE NEW CUT VINYL DOOR NUMBERS FOR ALL EXTERIOR DOORS. REFER TO DETAIL FOR EXTERIOR DOOR NUMBER SIGNAGE. VERIFY NUMBERING SEQUENCE WITH LOCAL FIRE DEPARTMENT.
 3. SIGNAGE SHALL COMPLY WITH ADA STANDARDS
 4. SIGNAGE PANEL COLOR TO BE SELECTED BY ARCHITECT FROM MANUFACTURER'S FULL RANGE OF COLORS.
 5. ALL SIGNS TO BE MOUNTED CENTERED AT 4'-0" A.F.F., U.N.O.

DISTRICT 99

COMMUNITY HIGH SCHOOL DISTRICT 99

Wight

Wight & Company
 wightco.com
 2500 North Frontage Road
 Darien, IL 60561
 P 630.969.7000
 F 630.969.7979



1 Signage-SECOND FLOOR - AREA B
 SCALE: 1/8" = 1'-0"

ISSUED FOR CONSTRUCTION - 07.26.2019
 PHASE B

REV	ISSUE	DATE

MFP IMPLEMENTATION - NORTH

4436 MAIN STREET
 DOWNERS GROVE, IL 60515

SIGNAGE PLAN - LEVEL 2 AREA B (PHASE B)

Project Number:
 5274-42
 Drawn By:
 DS
 Sheet:

A11.02B.b

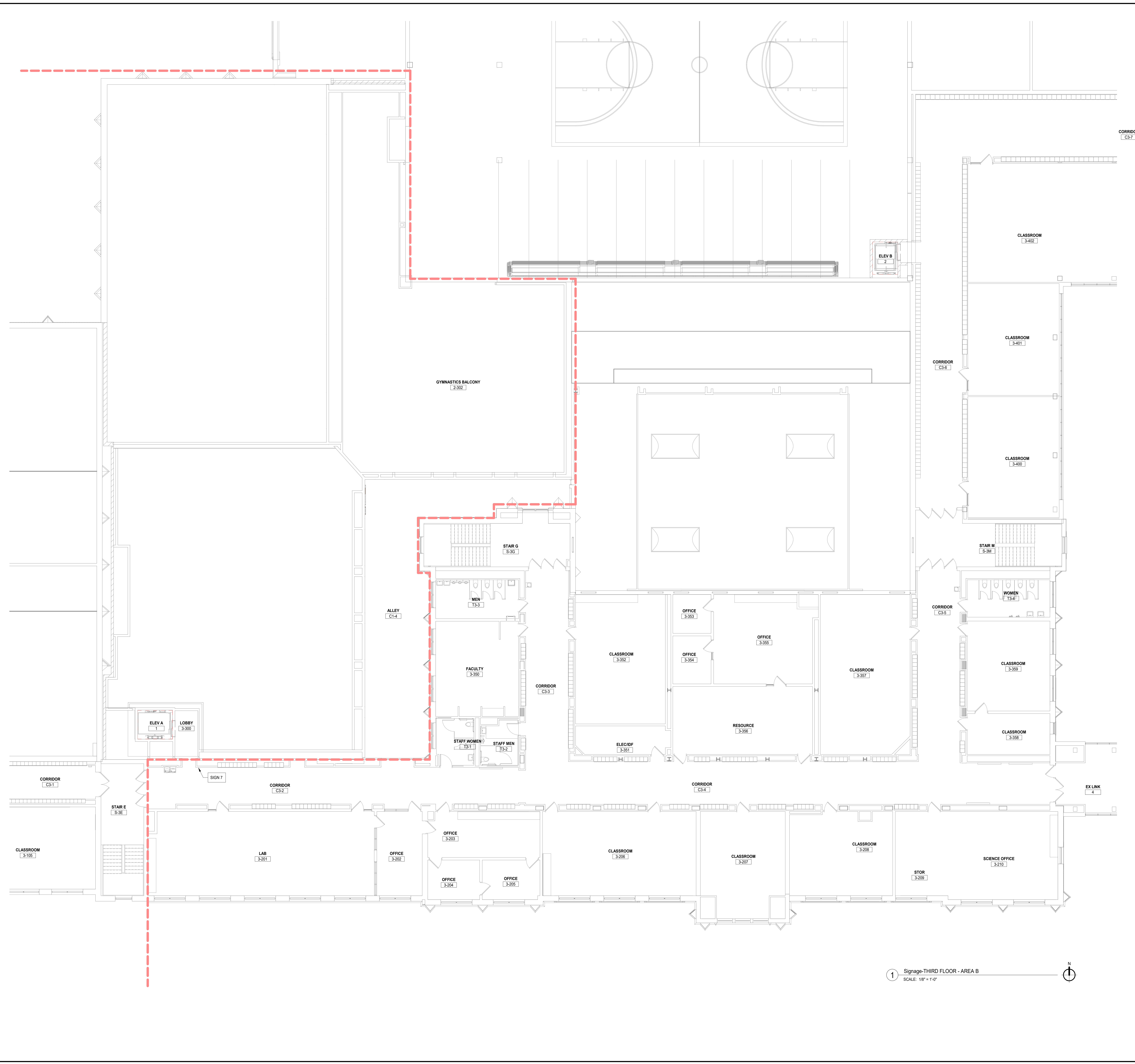
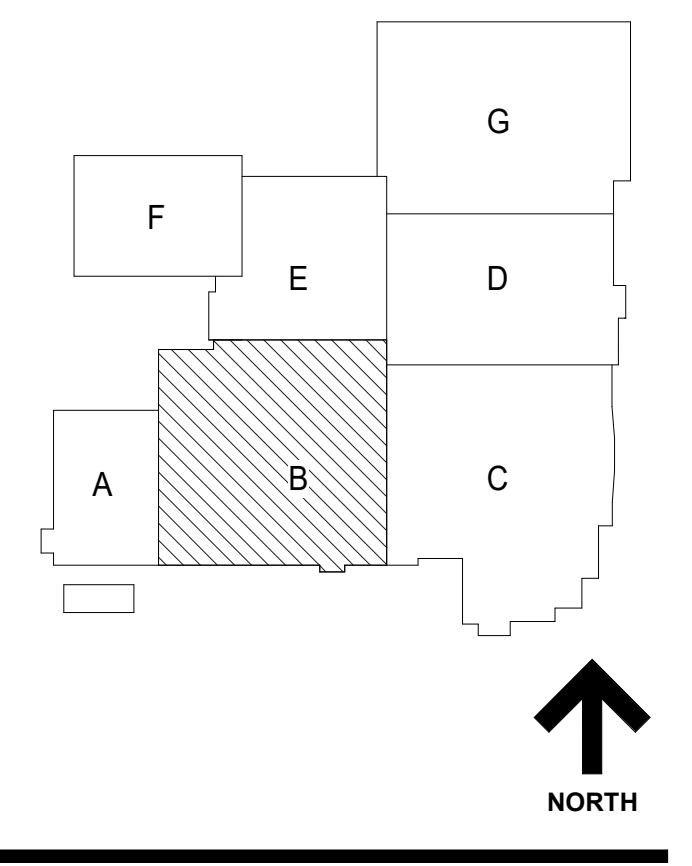
- GENERAL NOTES
1. SEE SHEET A11.20 FOR SIGNAGE TYPES AND ELEVATIONS
 2. PROVIDE NEW CUT VINYL DOOR NUMBERS FOR ALL EXTERIOR DOORS. REFER TO DETAIL FOR EXTERIOR DOOR NUMBER SIGNAGE. VERIFY NUMBERING SEQUENCE WITH LOCAL FIRE DEPARTMENT.
 3. SIGNAGE SHALL COMPLY WITH ADA STANDARDS
 4. SIGNAGE PANEL COLOR TO BE SELECTED BY ARCHITECT FROM MANUFACTURER'S FULL RANGE OF COLORS.
 5. ALL SIGNS TO BE MOUNTED CENTERED AT 4'-0" A.F.F., U.N.O.



COMMUNITY HIGH SCHOOL
DISTRICT 99



Wight & Company
wightco.com
2500 North Frontage Road
Darien, IL 60561
P 630.969.7000
F 630.969.7979



1 Signage-THIRD FLOOR - AREA B
SCALE: 1/8" = 1'-0"

8/10/2019 11:00:14 AM
 C:\Users\barbarad\Documents\02527442_DCN_Arch_2019_Central_mharden\NOC\CV
 Wight & Co. © Copyright 2019 All rights reserved. No part of these documents may be reproduced, stored, or transmitted in any form or by any means, electronic, mechanical, photocopying, recording or otherwise, without the prior written consent of Wight & Co.

ISSUED FOR CONSTRUCTION - 07.26.2019
PHASE B

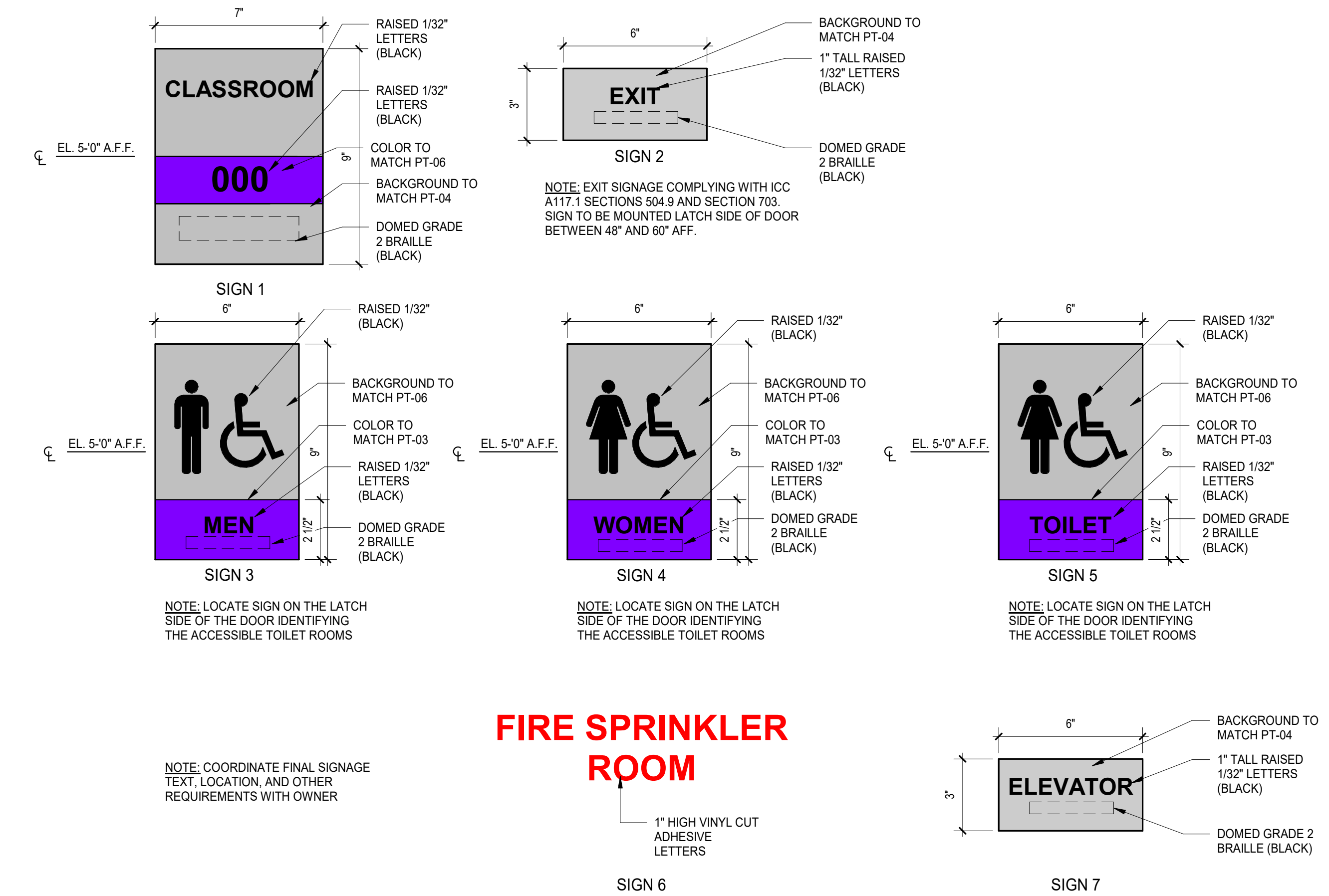
REV PHASE B ISSUE DATE
MFP IMPLEMENTATION - NORTH

4436 MAIN STREET
DOWNERS GROVE, IL 60515

SIGNAGE PLAN - LEVEL 3
AREA B (PHASE B)

Project Number:
5274-42
Drawn By:
DS
Sheet:

A11.03B.b



1 BASIC SIGNAGE ELEVATIONS
SCALE: 3" = 1'-0"

REV	ISSUE	DATE
ISSUED FOR CONSTRUCTION - PHASE B		07.26.2019
ISSUED FOR CONSTRUCTION - PHASE A		05.08.2019

**MFP
IMPLEMENTATION -
NORTH**

4436 MAIN STREET
DOWNERS GROVE, IL 60515

SIGNAGE DETAILS

Project Number:
5274-42
Drawn By:
DS
Sheet:

Scope – This TRADE CONTRACTOR’s scope shall include but not be limited to the scope listed below. Please see entirety of bid documents for all scope requirements.

BG7C BP78 SCOPE OF WORK FOR SIGNAGE NORTH AND SOUTH HIGH SCHOOL

1. This TRADE CONTRACTOR shall reference ALL General, Existing Architectural, Architectural Demolition, Architectural, Mechanical, Mechanical Demolition, Plumbing Demolition, Plumbing, Fire Protection, Electrical Demolition, Electrical, and Technology Sheets included in this Bid Group 7C as they relate to SIGNAGE. This TRADE CONTRACTOR shall read all Notes and General Notes included in the drawings as they pertain to this scope of work. This TRADE CONTRACTOR shall review the project SCHEDULE included in this project manual and provide sufficient manpower to complete this TRADE CONTRACTOR’s scope of work within the designated durations provided.

Note: This TRADE CONTRACTOR’S scope of work shall be limited to those areas as indicated by Phase B on plans. Any work shown outside of this scope area shall not be included in this TRADE CONTRACTOR’S scope of work unless otherwise noted in this document. This is Phase 2 of 3 phases of the Master Facility Plan, thus some drawings may include areas of work not to be included in this scope of work.

2. This TRADE CONTRACTOR shall be responsible for furnishing and installing all materials, skilled and/or licensed labor, equipment, tools, etc. to complete all aspects of this TRADE CONTRACTOR’s work for SIGNAGE including interior signage, exterior and interior vinyl adhesive signs, exterior aluminum letters signs and all associated hardware for a complete install as indicated in the contract documents.

NOTE: This TRADE CONTRACTOR shall provide a back plate for signs that will be mounted on glass partitions.

3. This TRADE CONTRACTOR shall review and become familiar with ALL documents included in this bid group. This TRADE CONTRACTOR shall furnish, install, complete and/or otherwise comply with all work as noted and or implied by the Specification Sections 101400 Signage.
4. This TRADE CONTRACTOR shall be responsible for any sealants or caulk related to this TRADE CONTRACTOR’s scope of work.
5. Start of work by this trade contractor on top of or against concrete/masonry/drywall or any other surface acknowledges this trade contractor’s acceptance of quality and completeness of adjacent surface.
6. This TRADE CONTRACTOR shall be responsible for and compliant with all specified requirements including but not limited to all: Performance Requirements, Submittals, QA, Testing, Training, QC, as specified and pertaining to this trade contractor’s work as noted in the plans and specifications.

NOTE: This TRADE CONTRACTOR shall be responsible for providing all shop drawings, submittals and samples per project specifications in a timely manner.

7. This TRADE CONTRACTOR shall be responsible for protecting any and all signage related materials and equipment on-site and as specified: prior to installation, during installation and/or until final acceptance by Construction Manager.

003000-1

8. All materials to be staged in approved location by Construction Manager and owner. This TRADE CONTRACTOR shall be responsible for coordinating staging/storing location with Construction Manager prior to any onsite delivery.
9. This TRADE CONTRACTOR to provide sufficient equipment, material, skilled manpower, supervision and/or premium time/shift work (all without additional compensation) as may be required to complete the work of this Trade Contractor in accordance with the overall project schedule.
10. This TRADE CONTRACTOR is responsible to provide all ladders, scaffolding, hoisting, lifts, etc. necessary to complete work in accordance with project schedule.
11. All mobilizations and demobilizations related costs of this TRADE CONTRACTOR are to be included without consideration of additional compensation.

SITE SPECIFIC – DOWNERS GROVE SOUTH

12. This TRADE CONTRACTOR shall be responsible for providing the Pressure Applied Vinyl Lettering per all interior elevations in the A7 series drawings. The signs will be applied over painter drywall.
13. This TRADE CONTRACTOR shall be responsible for furnishing and installing all interior signage per the signage drawings and all accessories required for installation, including any backplates at locations where the signs will be installed in glass walls or sidelites.

ALLOWANCES, BOND, & ALTERNATES

1. This TRADE CONTRACTOR will be required to provide a Performance and Payment Bond for their work in accordance with 00201 of the General Conditions.

ACCEPTANCE

Accepted as listed above in addition to terms and conditions of the original construction documents on which the bid was based.

Company: Wight Construction Services, Inc.
2500 North Frontage Road
Darien, IL 60561

Signed: _____

Printed Name: _____

Position: _____

Date: _____

END OF SECTION 003000 –Scope

003000-2