



DATE: September 29, 2020

FROM: Wight & Company
2500 N. Frontage Road
Darien, IL 60561

SUBJECT: ADDENDUM #4 TO THE BIDDING DOCUMENTS FOR:
BID GROUP #11
MASTER FACILITY PLAN IMPLEMENTATION
COMMUNITY HIGH SCHOOL DISTRICT 99
1436 NORFOLK STREET
DOWNERS GROVE, IL 60516

Wight & Company
wightco.com
.....
2500 North Frontage Road
Darien, IL 60561
.....
P 630.969.7000
F 630.969.7979

This addendum forms a part of the Bidding Contract Documents, dated September 1, 2020. Bidders must acknowledge receipt of this Addendum in the space provided on the Bid Form. Drawing revisions clouded and tagged throughout with delta 105.

SOUTH

SUBMIT ELECTRONICALLY:
Via Building Connected

DUE DATE:
October 8th, 2020

TIME:
1:00 PM (CST)

On Friday, March 27th, Governor Pritzker issued Executive Order 2020-15 allowing school districts to communicate, respond to, and open bids electronically for school construction projects. **Bids for this project will be accepted via Building Connected and all bids must be uploaded to Building Connected on or before 1:00 pm on October 8th, 2020.**

Bids will be opened and read by School District 99 and the bid opening will be recorded. Bid results will be posted on Wight’s website no later than 3pm on Friday October 9th, 2020. Only 1 full copy of the bid is required for electronic submission.

I. Clarifications

1. None.

II. Specifications

1. None.

III. Modified Drawings

ARCHITECTURAL

1. Sheet A10.13F FINISH PLAN - LEVEL 3 – AREA F (***Full size sheet issued***)
 - a. Added full sheet.

This addendum consists of: (2) Text Pages (0) Specification Sections and (1) Drawing Sheet.

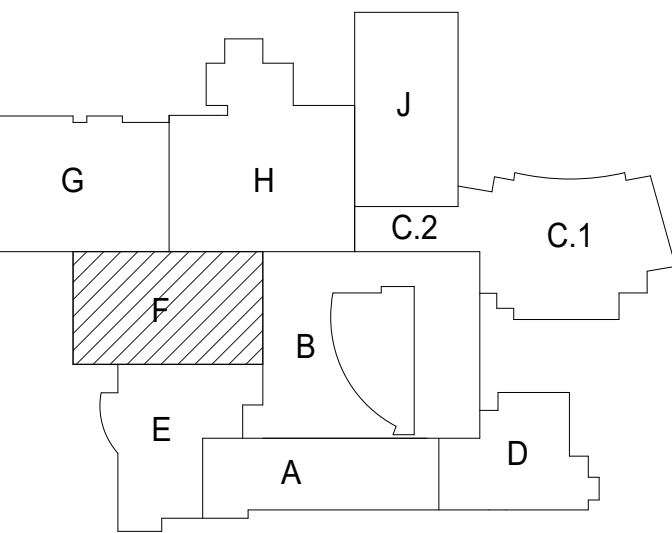
END OF ADDENDUM



COMMUNITY HIGH SCHOOL
DISTRICT 99



Wight & Company
wightco.com
2500 North Frontage Road
Darien, IL 60561
P 630.969.7000
F 630.969.7979



FINISH LEGEND	
(PT-1)	WALL FINISH
(RBS-1)	BASE FINISH
(LVT-1)	FLOOR FINISH

NOTE:
1. FINISH TAG ABOVE INDICATES FINISHES FOR SPACE, UNLESS NOTED OTHERWISE.
2. SEE A10.00 FINISH LEGEND FOR COMPLETE DESCRIPTION.

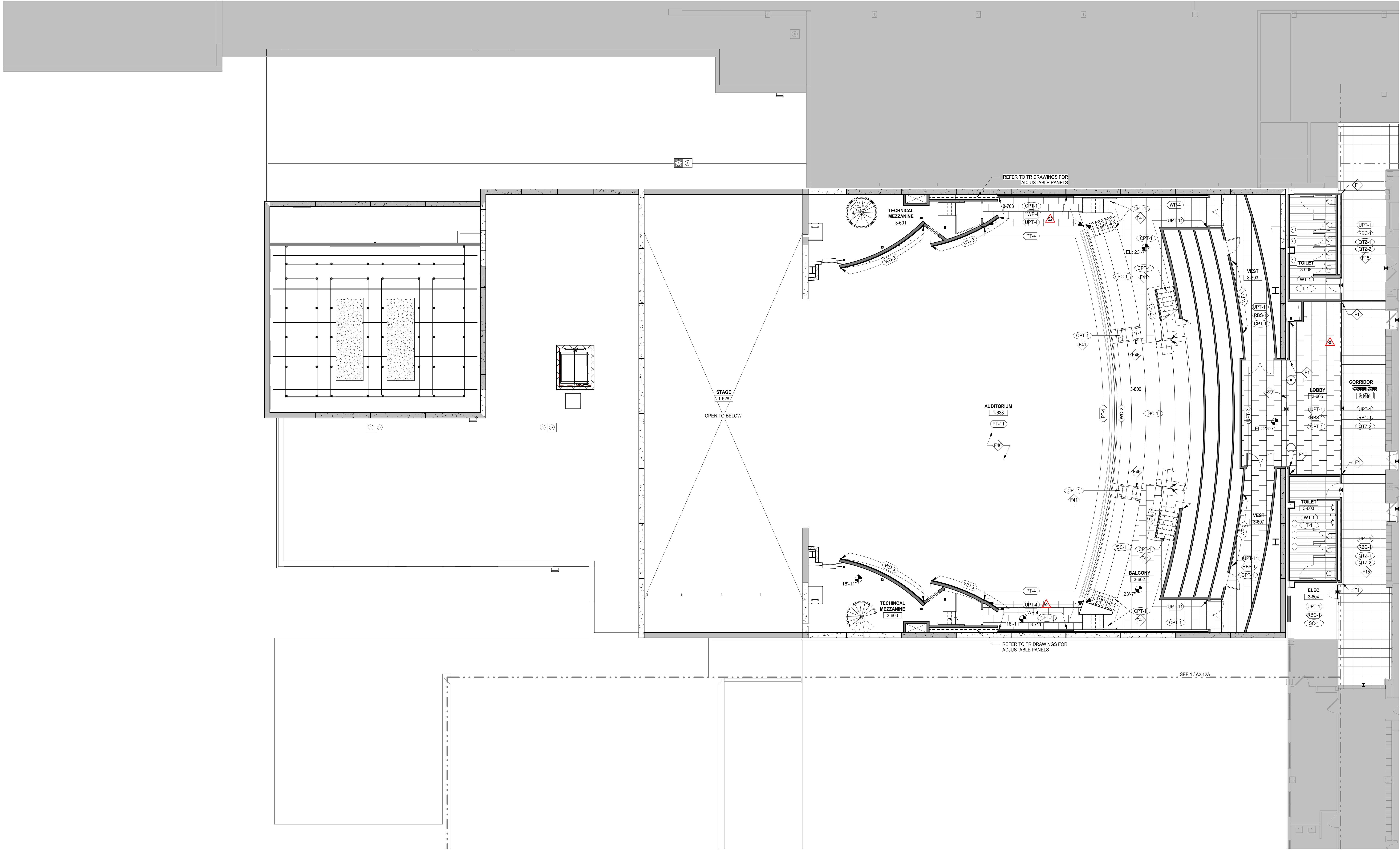
EXTENT OF FINISHES DEVIATING FROM REST OF ROOM

BASE TYPE WALL FINISH

FLOOR TRANSITION

MATERIAL DIRECTION

KEYNOTES	
F1	PROVIDE FULL HEIGHT CORNER GUARD. HOLD OFF FINISH FLOOR 4" FOR WALL BASE INSTALLATION. TYPE: FLUSH MOUNT STAINLESS STEEL, 2" WING
F15	INSTALL QTZ-1 AND QTZ-2 QUARTZ TILE 50%/50% RANDOM MIX.
F22	FLOOR JOINT F-1. REFER TO A2 FOR DETAIL.
F40	PAINT ALL HANDRAILS, GUARDRAILS AND MISC. METAL UPT-11 U.N.O.
F41	PROVIDE STAIR NOSING AT CARPET STAIR TREADS. TYP. STYLE: TBD. COLOR: TBD
F46	PAINT ALL AISLE RAILINGS UPT-3



1 FINISH PLAN LEVEL 3 - AREA F
SCALE: 1/8" = 1'-0"

105	ISSUED FOR ADDENDUM 3 - BG 11	09.28.2020
80	ISSUED FOR DOC MOD 058	05.19.2020
	ISSUED FOR PLAN REVIEW - PHASE C	04.16.2020
52	ISSUED FOR ADDENDUM 3 - BG9	02.06.2020
	ISSUED FOR CONSTRUCTION - PHASE C	01.28.2020
	ISSUED FOR BID GROUP 8 - PHASE C	11.20.2019
34	ISSUED FOR 75% CONSTRUCTION DOCUMENTS - PHASE C	10.14.2019
	ISSUED FOR DESIGN DEVELOPMENT	07.12.2019
REV	ISSUE	DATE

**MFP
IMPLEMENTATION -
SOUTH**

1436 NORFOLK STREET
DOWNERS GROVE, IL 60516

**FINISH PLAN - LEVEL 3 -
AREA F**

Project Number:
5274-42
Drawn By:
A SASSILA
Sheet:

A10.13F

8/26/2020 3:55:07 PM
C:\Users\jblack\Documents\025274-42_DGS_Arch_2019_Central_Planes.rvt
Wight & Co. © Copyright 2019. All rights reserved. No part of these documents may be reproduced, stored, or transmitted in any form or by any means, electronic, mechanical, photocopying, recording or otherwise, without the prior written consent of Wight & Co.